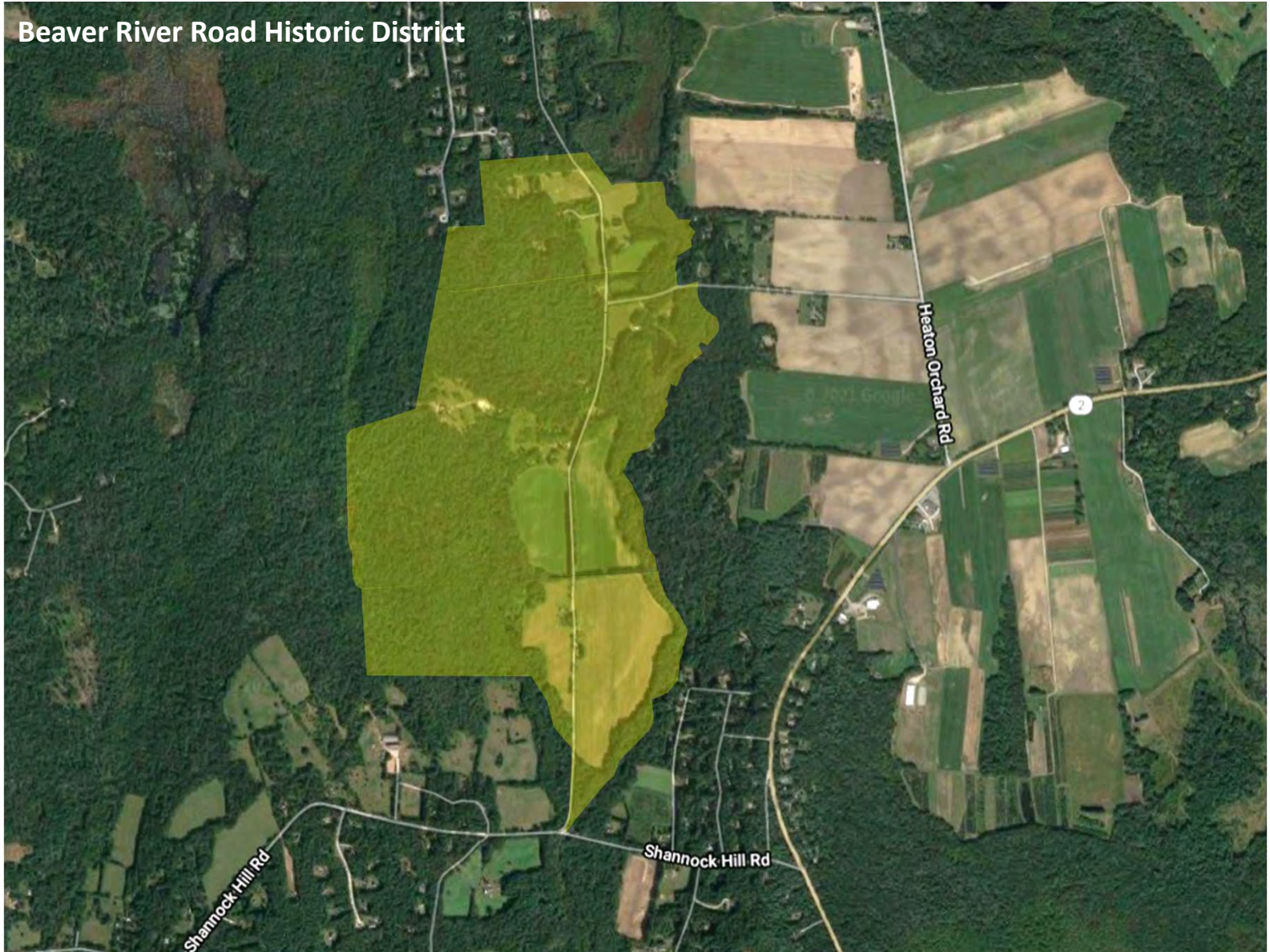
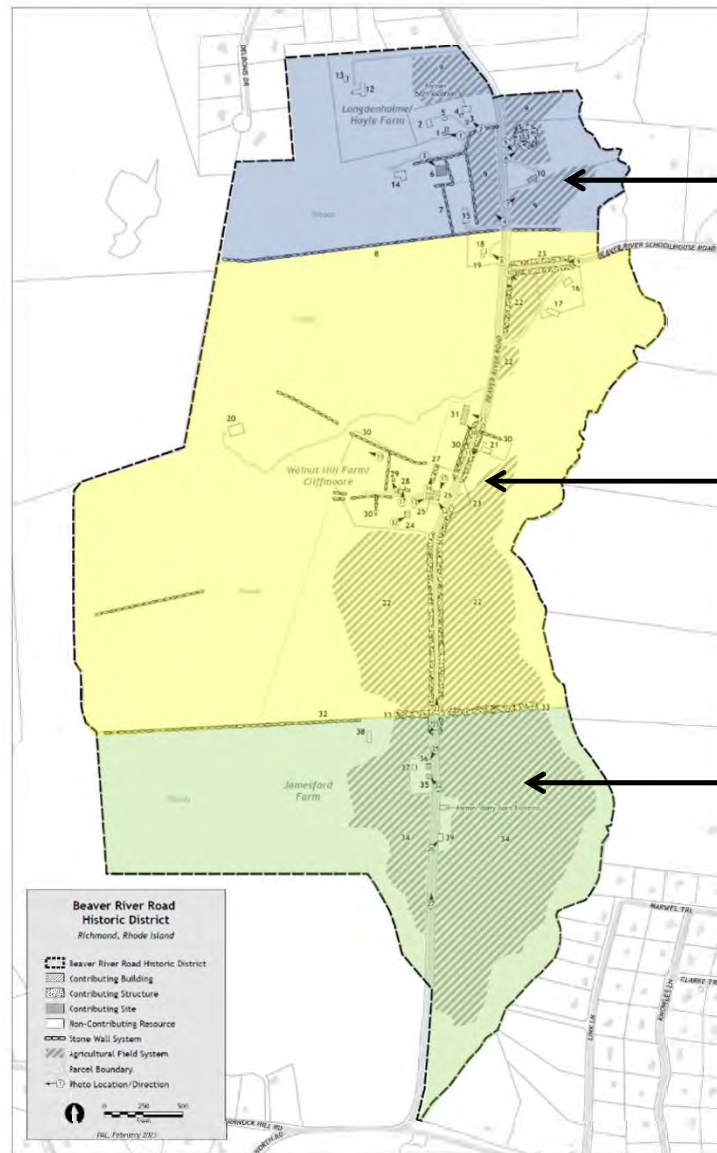


Beaver River Road Historic District
Richmond

Beaver River Road Historic District



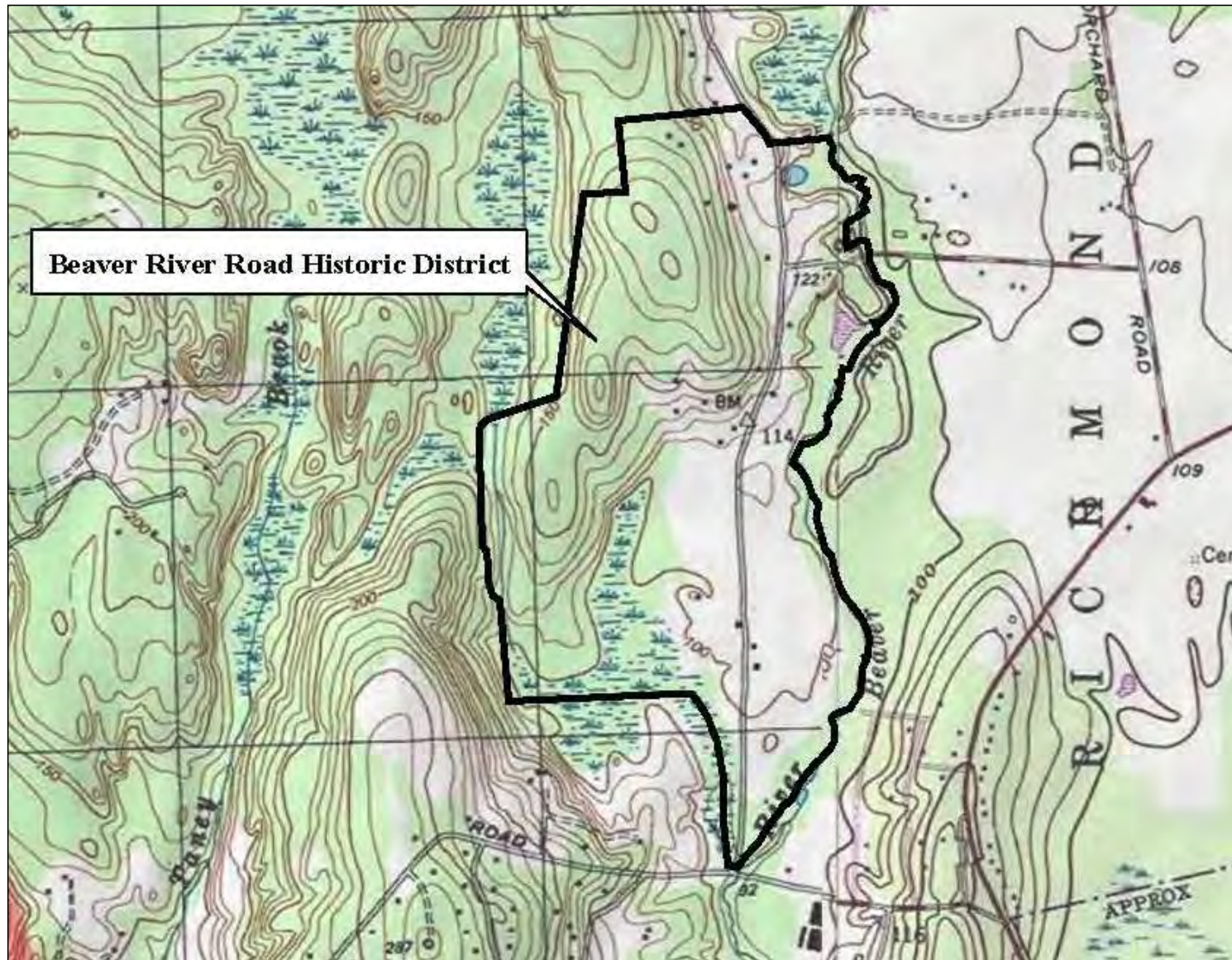


Longdenholme/Hoyle Farm

Walnut Hill Farm/Cliffmoore

Jamesford Farm

Beaver River Road Historic District
Boundary Map





Henry F. Walling, *Map of the State of Rhode Island*, 1855



D&G Beers & Co., Atlas of
the State of Rhode Island, 1870

Everts & Richards, *New
Topographical Atlas of Surveys
Southern Rhode Island*, 1895





1951-52





south elevation



east elevation

Longdenholme/Hoyle Farm House
79 Beaver River Road



Longdenholme/Hoyle
Farm Shed #1
79 Beaver River Road

south and east elevations



**Sarah & William Greene
Lot/Hoyle Family
Cemetery
79 Beaver River Road**



**John and Sarah
Hoyle House**
84 Beaver River Road

north elevation



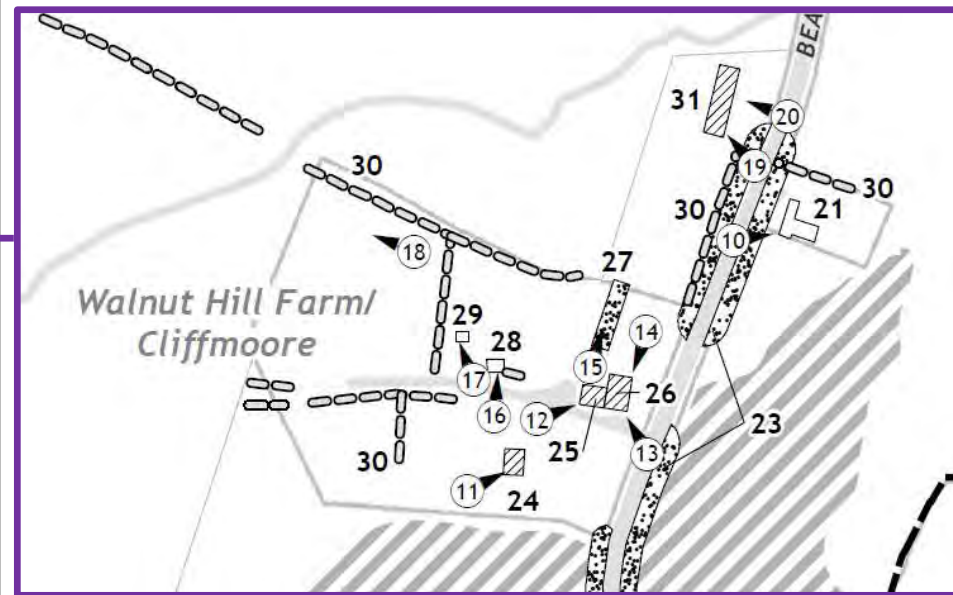
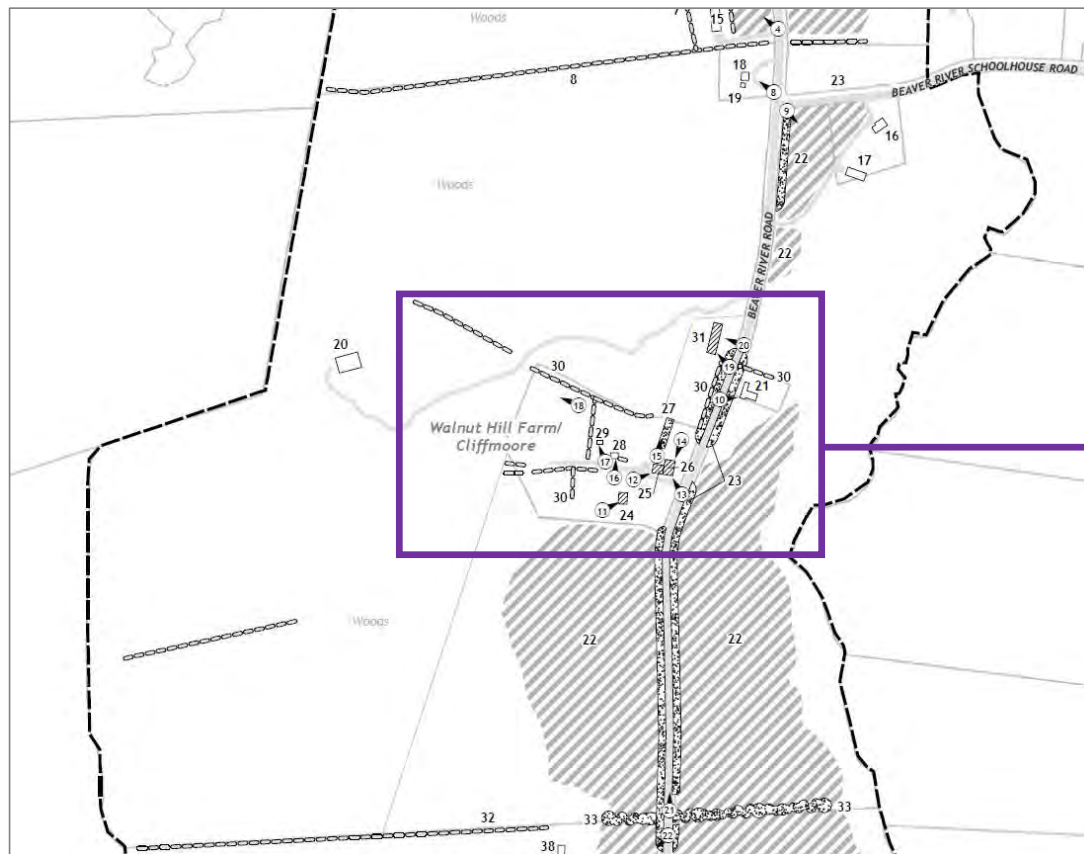
**John and Sarah Hoyle
House – pond and field**
84 Beaver River Road
view looking northeast



Longdenholme/Hoyle Farm – historic agricultural field
east side of Beaver River Road, view looking northwest



Longdenholme/Hoyle Farm – historic agricultural field
west side of Beaver River Road, view looking northeast



Walnut Hill Farm/Cliffmoore



**Walnut Hill Farm/
Cliffmoore House**
133 Beaver River Road

south and west elevations



south and west elevations

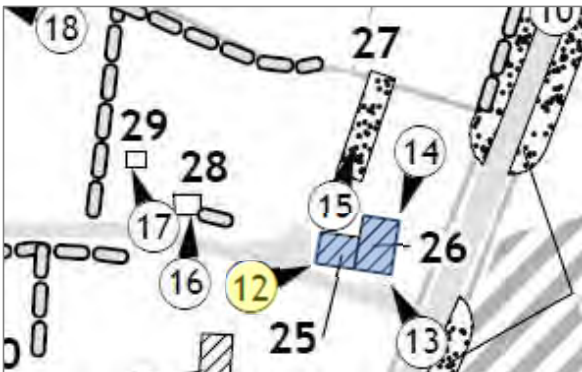
Walnut Hill/Cliffmoore House
133 Beaver River Road



June 29, 1906

photo courtesy of Michael and Pamela Donnelly

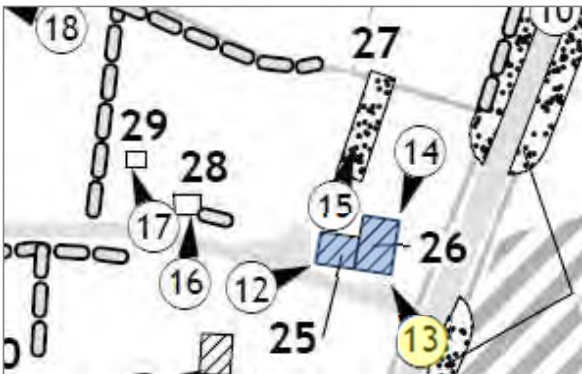
south and east elevations



Walnut Hill Farm/Cliffmoore Barn #1 (Map No. 25)

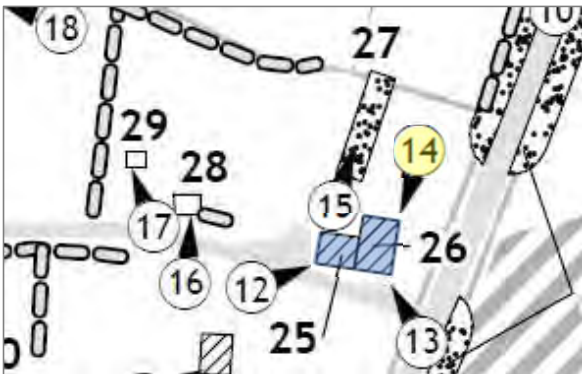
133 Beaver River Road

view looking northeast (photo no. 12)



Walnut Hill/Cliffmoore Barn #1 (Map No. 25; left) and connector to Barn #2 (right)
133 Beaver River Road

view looking northwest (photo no. 13)



Walnut Hill/Cliffmoore Barn #2 (Map No. 26; left) and Barn #1 (Map No. 25; right)

133 Beaver River Road

view looking south (photo no. 14)



Walnut Hill/Cliffmoore Farm Animal Pen (NC)

133 Beaver River Road



Walnut Hill/Cliffmoore Farm Corn Crib (NC)

133 Beaver River Road



Tree Allée

Beaver River Road

view looking north from
south end of Walnut Hill
Farm/Cliffmoore

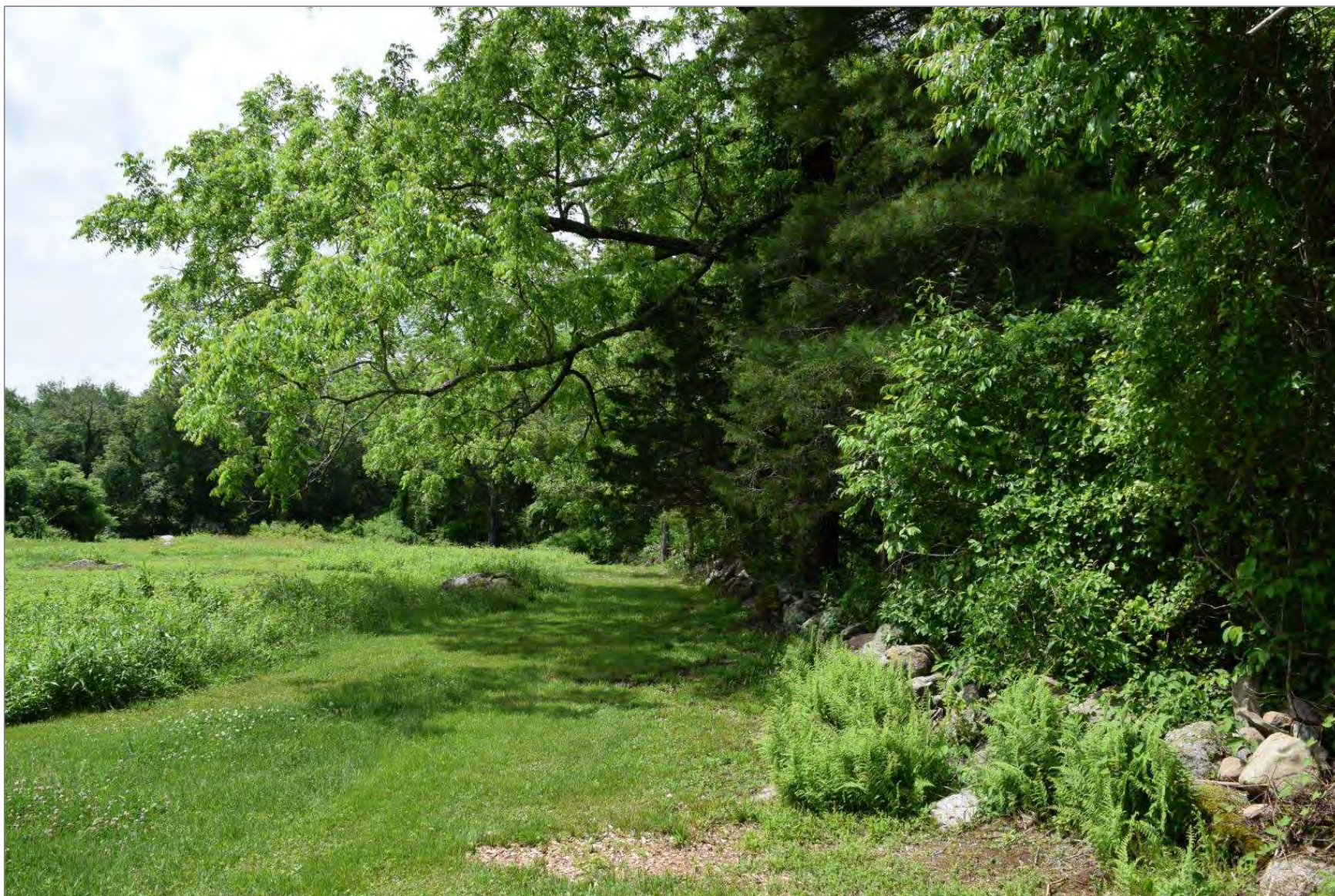


1939



January 1953

photo courtesy of Gail and Andy Tibbits



Walnut Hill/Cliffmoore
stone walls

view looking northwest

**Walnut Hill
Farm/Cliffmoore
internal driftway**

view looking north



**Walnut Hill
Farm/Cliffmoore
historic agricultural field**

east side of
Beaver River Road,
view looking southeast





south and east elevations



east elevation

Walnut Hill/Cliffmoore Dairy Barn
123 Beaver River Road



Rosanna Perrault House (NC)
122 Beaver River Road



Pauline and Michael Testa House (NC)
97 Beaver River Road



Jamesford Farm



Jamesford Farm House
165 Beaver River Road

south and east elevations



south and east elevations

Jamesford Farm House
165 Beaver River Road



date unknown
photo courtesy of Gail and Andy Tibbits

north and east elevations

Jamesford Farm Barn
165 Beaver River Road



north and east elevations



House/Former Barn (NC)
172 Beaver River Road

west elevation



Jamesford Farm
historic agricultural field

west side of
Beaver River Road,
view looking southwest



Jamesford Farm
historic agricultural field

view looking north

Beaver River Road Historic District



Criterion A: agriculture

Criterion C: architecture

Period of Significance: 1763-1970

