

PRESERVATION PROGRESS

Saturday, April 3, 1993
CONFERENCE AGENDA

8:30-9:15 AM **REGISTRATION, COFFEE, EXHIBITS** *Ballroom/Art Museum at Linden Place, 500 Hope Street*

9:15-9:45 AM **WELCOMING REMARKS**

Edward F. Sanderson, Executive Director, RI Historical Preservation Commission
Dennis P. Albert, President, RI Alliance of Historic District Commissions
Halsey C. Herreshoff, Bristol Town Administrator

9:45-10:15 AM **THE RHODE ISLAND STORY: 25 YEARS OF PRESERVATION PROGRESS**

David Chase, Executive Director, Preservation Maryland

The author and editor of the earliest Rhode Island survey reports will share his memories of how the new Historical Preservation Commission, led by Antoinette Downing, worked with community preservation groups to forge an effective partnership. At the same time, as the former curator of the National Building Museum and now the head of Maryland's private, non-profit statewide preservation advocacy organization, David is uniquely qualified to place Rhode Island's achievements in a national context.

10:15-10:30 AM **COFFEE BREAK, EXHIBITS**

10:30-12 PM **LOOKING AHEAD: SETTING PRESERVATION GOALS FOR THE 21ST CENTURY**

Moderator: Eric Hertfelder, Executive Director, National Conference of State Historic Preservation Officers

Panel: Ann O'Neill, President, South County Tourism Council
B. Clarkson Schoettle, Executive Director, Providence Preservation Society Revolving Fund
Frédéric C. Williamson, State Historic Preservation Officer
Wm McKenzie Woodward, Planning and Land Use Coordinator, RIHPC
Mark Zelonis, Executive Director, Heritage Trust of Rhode Island
David Chase, Executive Director, Preservation Maryland

Expanding preservation support . . . developing HDCs. . . establishing a strong advocacy voice . . . capitalizing on tourism. . . exploring land use strategies . . . saving endangered properties . . . finding the funds to pay for it all. . . join our panel in exploring the challenges and opportunities which we will face in the years ahead.

Moderator Eric Hertfelder was executive director of the RIHPC from 1976 to 1984, a crucial period in the development of the statewide program. Since 1984, as executive director of the National Conference of State Historic Preservation Officers, he has focused on nationwide preservation issues, and he brings this perspective to us today.

12:00-12:15 PM Immediately following the morning session, the RI Alliance will hold its Annual Business Meeting/
Election of Officers. All Alliance members are invited to attend.

12:00-1:30 PM **LUNCHEON, FOLLOWED BY THE PRESENTATION OF THE RHODE ISLAND STATE
HISTORIC PRESERVATION AWARDS**

Enjoy a delicious luncheon while you get together with old friends or make new acquaintances and discuss common concerns at one of our "special interest tables." Then join in honoring the first recipients of the newly-established State Historic Preservation Awards.

1:30-3:45 PM **WORKSHOPS AND TOURS** *See next page for schedule and descriptions.*

4:00-5:30 PM **OPEN HOUSE IN THE BRISTOL HISTORIC DISTRICT and
SILVER TEA AT LINDEN PLACE**

The owners of three early 19th century houses invite you to tour their homes. Then join us back in the Mansion at Linden Place for a "Silver Tea Reception" celebrating the 25th anniversary of Rhode Island's historic preservation act.

This conference has been made possible by a grant from



**RHODE ISLAND
HISTORIC PRESERVATION
COMMISSION**

AFTERNOON WORKSHOPS AND TOURS

CONCURRENT SESSIONS 1:30-2:45 PM

All Things Considered: The Bristol HDC's First Six Years

Dory Ann Skemp, Chair, Bristol Historic District Commission
Join in a slide-illustrated discussion of the preservation philosophies, rehab standards and local realities which influenced various Bristol HDC decisions. Recommended for HDC members.

Paint Colors for Historic Buildings

Philip C. Marshall, Architectural Conservator and Professor,
Center for Historic Preservation, Roger Williams University
Jacqueline L. Connell, Architectural Consultant and Illustrator/
Co-Author of *Paints for Old Houses*

Gain an understanding of when and how to use paint analysis to determine the original colors of your building and learn which colors are historically appropriate for different architectural styles.

Caring for Rhode Island's Historic Cemeteries

Leona A. Kelley, Chair, Rhode Island Legislative Commission
to Study Historic Cemeteries

Edwin B. McDermott, Old St. Mary's Cemetery, Pawtucket

Mark E. Russell, Chair, Warwick Historical Cemetery
Commission

John E. Sterling, RI Historic Cemetery Transcription Project

Get together with other Rhode Islanders who share your concern for old cemeteries to discuss proposed legislation, hear how communities are mobilizing resources to maintain cemeteries, and learn about the ongoing statewide effort to record gravestone data.

Bus Tour to Blithewold Mansion & Gardens

Enjoy Blithewold's gracious turn-of-the-century summer residence and nationally renowned gardens. Mark Zelonis will provide a behind-the-scenes view of the latest restoration work under way.

Old Windows — Repair or Replace?

John Canham and Bob Major, The Preservation Cooperative
Two, restoration consultants/housewrights will review the factors that should guide your decision, demonstrate how to repair old windows, and show and discuss samples of good and bad replacement windows. (Recommended for HDC members and property owners.)

New Kids On The Block

Barbara L. Barnes, Children's Education Coordinator,
Providence Preservation Society

Claire Teixeira, Children's Education Program Assistant,
Providence Preservation Society

Explore resources and creative ideas for introducing community history to youngsters. Hear how to involve neighborhood groups and recruit volunteers; sample games, puzzles and books; network with other programs around the state.

A Lively Look at Linden Place

Joan E. Roth, Linden Place Tour Guides

This 1810 mansion is rich not only in architectural detail but also in social history. As you tour its elegant rooms, learn about the colorful personalities who have inhabited Linden Place over the years.

Go Directly to Gaol

Visit the Bristol Historical and Preservation Society's museum and headquarters, in the 1828 Bristol County Gaol, for a guided tour through a special needlework exhibit and collections covering 300 years of Bristol history.

CONCURRENT SESSIONS 3:00-3:45 PM

Handicap Access and Good Design

Moderator: Virginia Hesse, AIA, Principal Historical Architect,
RIHPC

Peter Coccoli, Chief Architectural Access Coordinator, State
Building Commission

Bob Cooper, Executive Secretary and Deputy State ADA
Coordinator, Governor's Commission on the Handicapped
Cornelis J. de Boer, AIA, Senior Associate, Irving B. Haynes &
Associates

Jack Renshaw, AIA, Clifford M. Renshaw Architects

Barbara J. Thornton, AIA, David Presbrey Architects

Accessibility and good rehab design *can* be compatible. Gain new insights from the panel's presentation of handicap access solutions for specific properties representing common historic building types.

Funding Preservation Projects and Programs

Denise Panichas, President, Challenge Education Associates
Familiarize yourself with sources of grants for preservation projects and programs and analyze a sample grant application.

The Restoration of Linden Place

Tour the restoration work under way in the mansion and its outbuildings with project architect Alan Berry, AIA.

A Lively Look at Linden Place

See description above.

Rhode Island's Unique Preservation Resource

Karen L. Jessup, Director, Center for Historic Preservation,
Roger Williams University

Looking for a good historic preservation class or a hard-to-find publication? Does your society need help surveying resources or restoring a building? Discover the resources available through the Center for Historic Preservation.

"Beautiful Bristol"

Elizabeth (Bonnie) Warren, Principal Historic Preservation
Specialist, RIHPC

Discover the wealth of Bristol's architecture in a slide-illustrated talk by the co-author of *Historic and Architectural Resources of Bristol*.

Our Town: Walking Tours of Bristol

Lombard John Pozzi, AIA, Bristol Historic District
Commission

Kevin E. Jordan, Professor, Center for Historic Preservation,
Roger Williams University

Accompany two local preservation leaders for a firsthand view of Bristol's historic district and a discussion of community preservation efforts.

Go Directly to Gaol

See description above.

REGISTRATION

Due to limited seating, advance registration is required. Registration will close when seating capacity is reached, and no later than March 31.

Cost: \$10.00*

Please use a separate registration form for each person. Mail registration form(s) together with a check payable to RI Alliance of Historic District Commissions, to:

Historic Preservation Conference
RI Historical Preservation Commission
The Old State House
150 Benefit Street
Providence, RI 02903
401-277-2678

** Fee covers lunch/open house costs. If you do not plan to eat lunch or to attend the open houses, you may attend the conference free of charge. Please note that a registration form must still be sent in by March 31.*

DIRECTIONS TO CONFERENCE

From I-195 East or West: Take Exit 7 (Seekonk/Barrington) to Rte. 114 South (also called the Wampanoag Trail.) Travel approximately 17 miles on Rte. 114, through the towns of Barrington and Warren, to Bristol. In Bristol, Rte. 114 is called Hope St. Stay on Hope St., keeping left at the fork in the road by the Exxon station.

Three blocks past the fork, turn left onto Bradford Street. Take the first right onto Central Street, which is immediately behind the Colt Memorial School. Go to the end of Central and turn right again to reach the parking lot behind the school. Registration for the conference will be in the Linden Place Ballroom/Art Museum, which is immediately south of the school.

From Aquidneck Island: Follow Rte. 114 North from Newport, through Middletown and Portsmouth, over the Mount Hope Bridge (30 cent toll). Stay on 114, bearing left at the fork in the road, into downtown Bristol. Linden Place is at 500 Hope Street (Rte. 114) on the right. Continue past the mansion and the Colt Memorial School directly north of the mansion and turn right onto Bradford Street. Follow directions as above.



Name _____ Title _____

Organization: _____

Mailing Address _____

City _____ State _____ Zip: _____

Daytime Phone: () _____ Evening Phone: () _____ Fee enclosed _____

Workshop/Tour Selection

FIRST SESSION 1:30-2:45 PM (SELECT ONE)

- All Things Considered
- Old Windows — Repair or Replace?
- Paint Colors for Historic Buildings
- Caring for Rhode Island's Historic Cemeteries
- New Kids On The Block
- Bus Tour to Blithewold
- A Lively Look at Linden Place
- Go Directly to Gaol

SECOND SESSION 3:00-3:45 PM (SELECT ONE)

- Handicap Access and Good Design
- Funding Restoration Projects
- Rhode Island's Unique Preservation Resource
- The Restoration of Linden Place
- Beautiful Bristol
- Walking Tours of Bristol
- A Lively Look at Linden Place
- Go Directly to Gaol

If you have a physical handicap. . .

Please check the appropriate box below so that we can be ready to accommodate you.

- Wheelchair
- Deaf/Hearing Impaired
- Visually Impaired
- Other (please specify)

Share Your Organization's Work. . .

Table space will be available so that non-profit organizations may share samples of their printed materials and announcements of upcoming events. If you plan to bring materials, please check the box below. (We suggest 200 copies.)

- I will bring printed materials for the organization named on this registration form.

Add your input to the morning panel discussion. . .

What do you think are the most important challenges and opportunities facing historic preservation in Rhode Island in the coming years? The panel will incorporate comments from conference registrants into its discussion.



Statewide Historic
Preservation Conference
Saturday, April 3, 1993

RI Historical Preservation Commission
The Old State House
150 Benefit Street
Providence, RI 02903

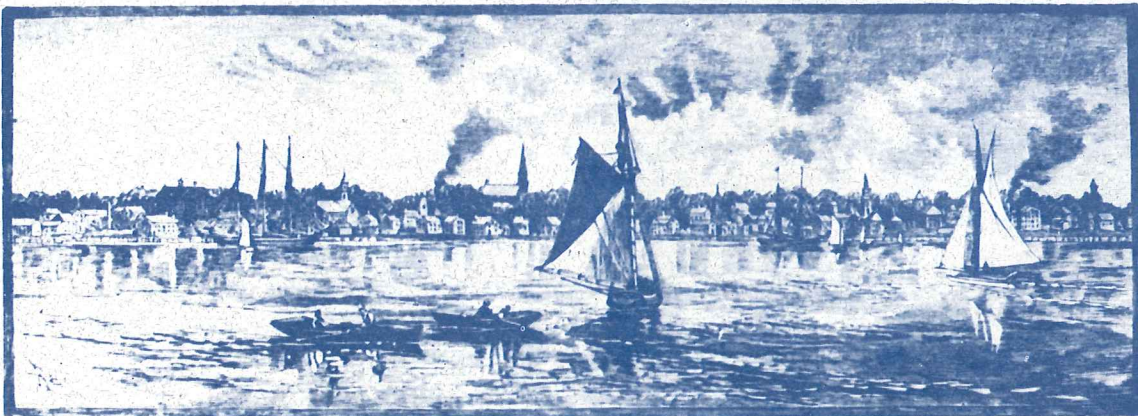
BULK PERMIT
U.S. POSTAGE
PAID
PERMIT NO. 71
BRISTOL, RI 02809

PRESERVATION PROGRESS

The 1993 Statewide Historic Preservation Conference

celebrating the 25th Anniversary of Rhode Island's Historic Preservation Act
incorporating the Annual Meeting of the Rhode Island Alliance of Historic District Commissions

Bristol, Rhode Island - Saturday, April 3, 1993



Sponsored by
RI Historical Preservation Commission
Bristol Historic District Commission and the Town of Bristol
RI Alliance of Historic District Commissions

Center for Historic Preservation, Roger Williams University
Heritage Trust of Rhode Island
League of Rhode Island Historical Societies