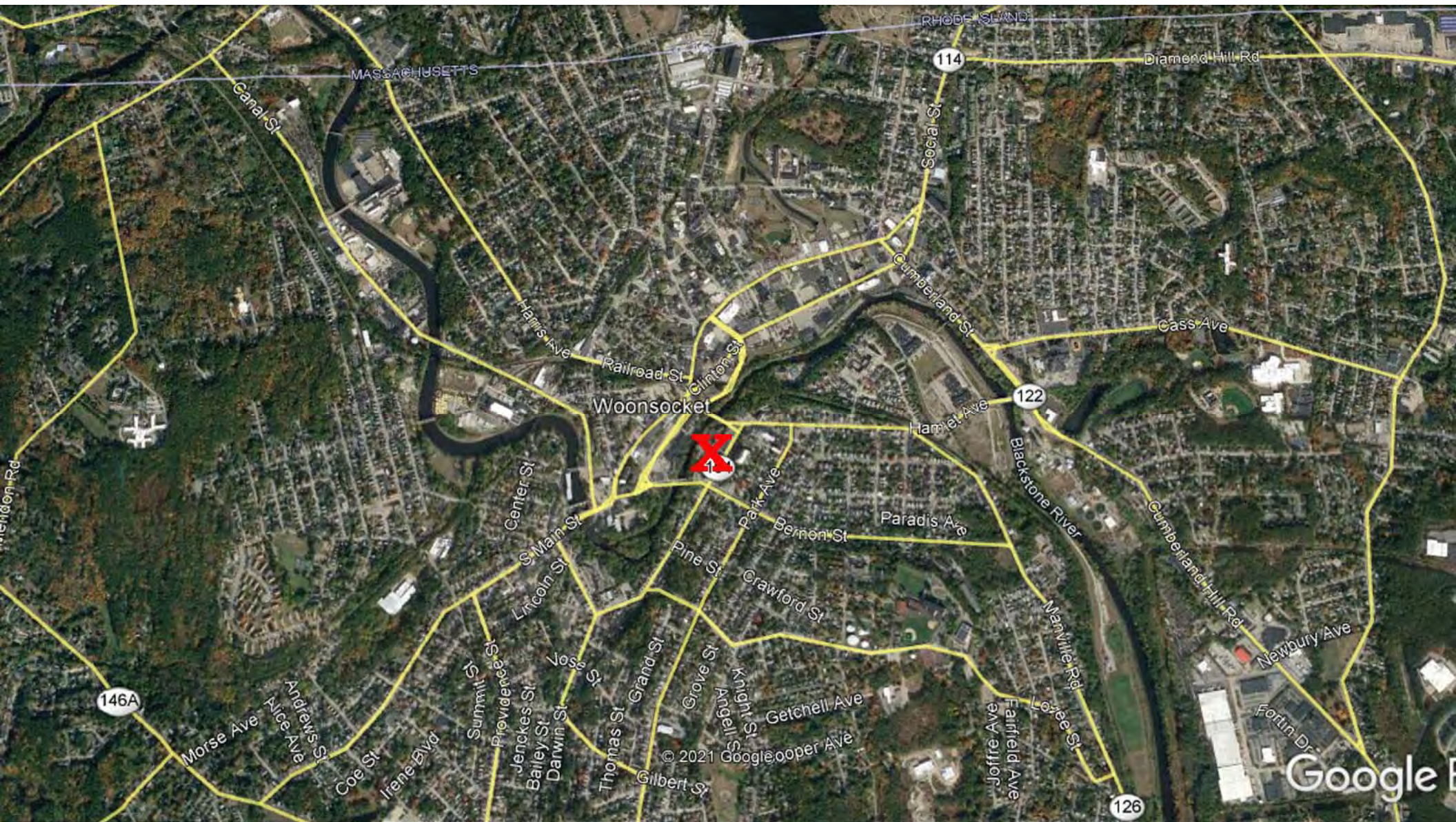
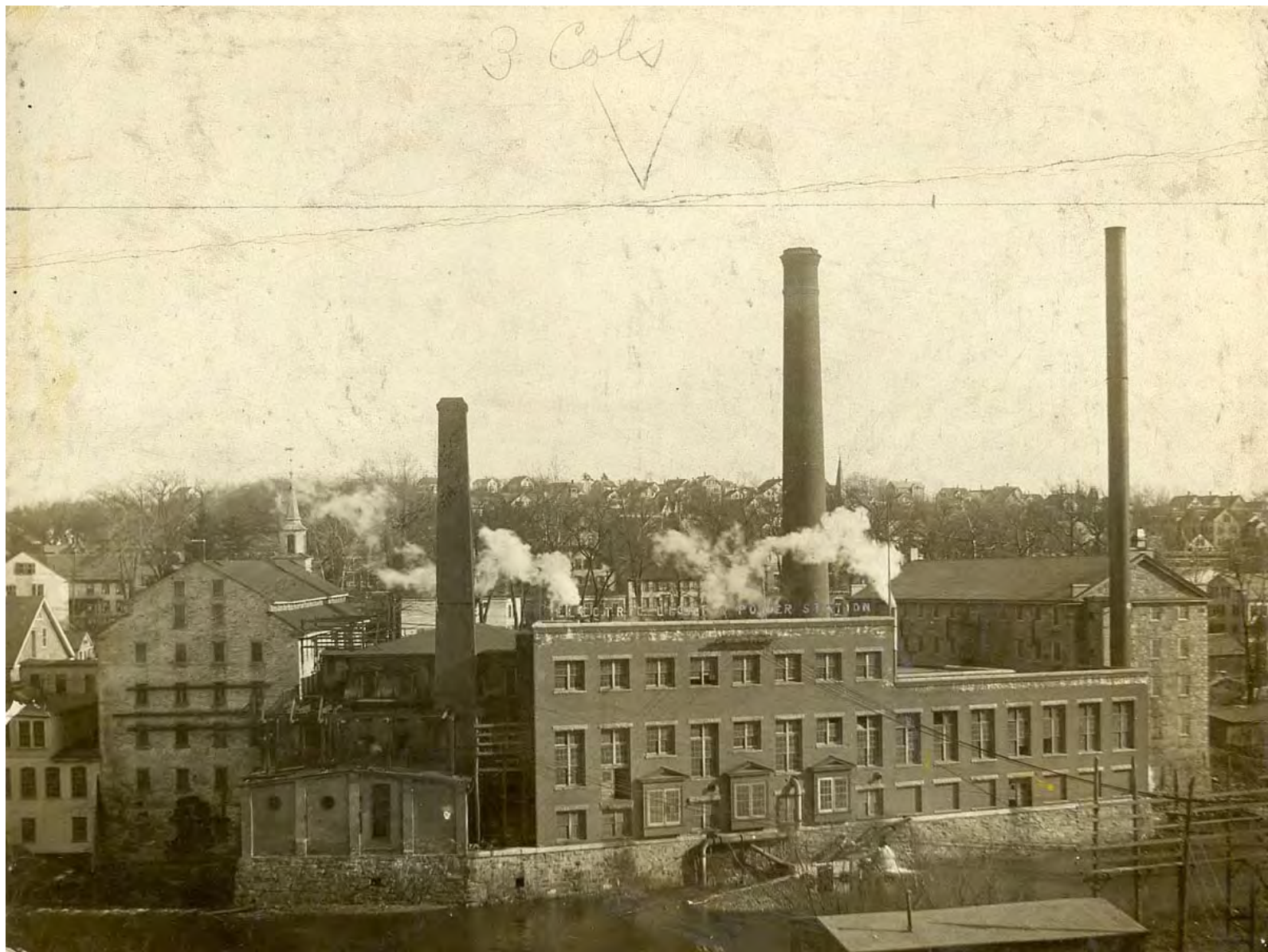


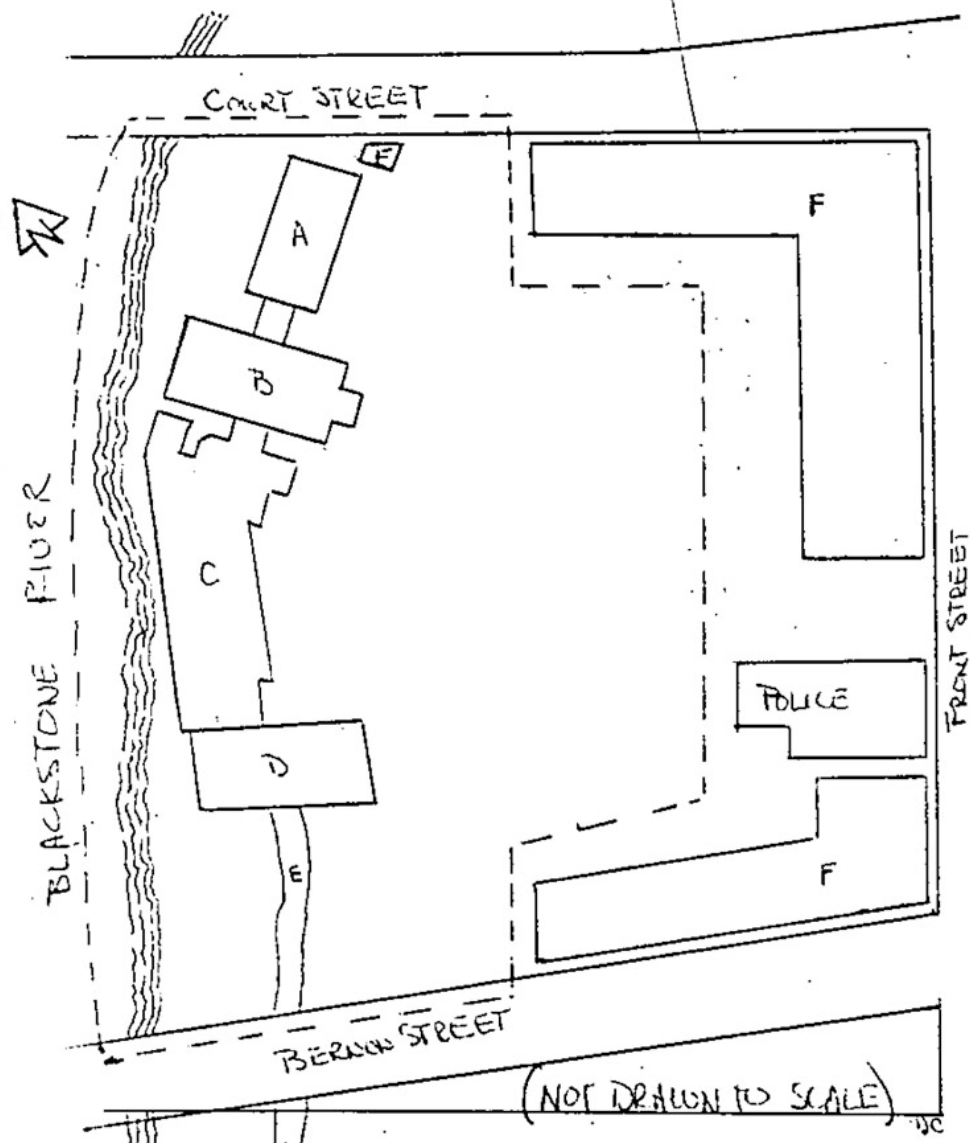
Woonsocket Company/ Bernon Mills Historic District

(Additional Documentation)



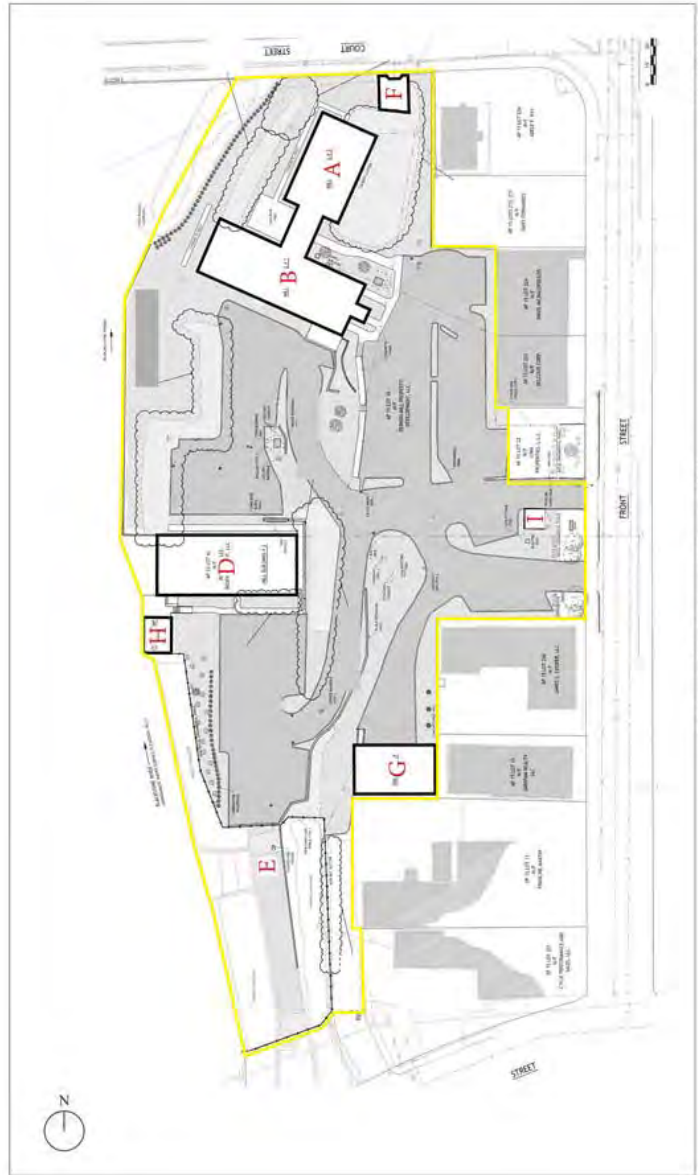
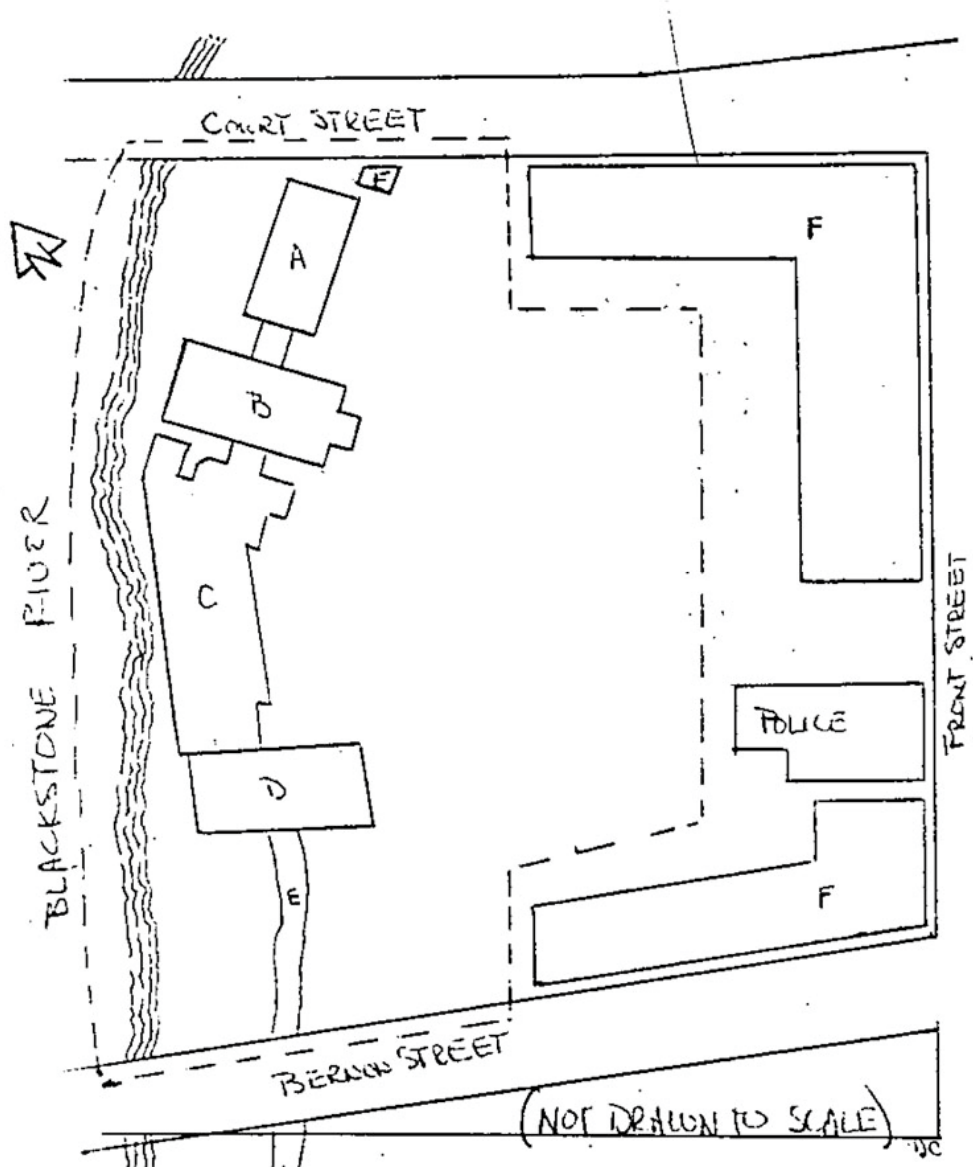






SITE PLAN

- A. #4 MILL, 1859
- B. #1 MILL, 1827-28
- C. POWER PLANT, 1890-1930
- D. #2 MILL, 1833
- E. POWER TRENCH
- F. COMMERCIAL STRUCTURES
- BOUNDARY OF AREA DOMINATED























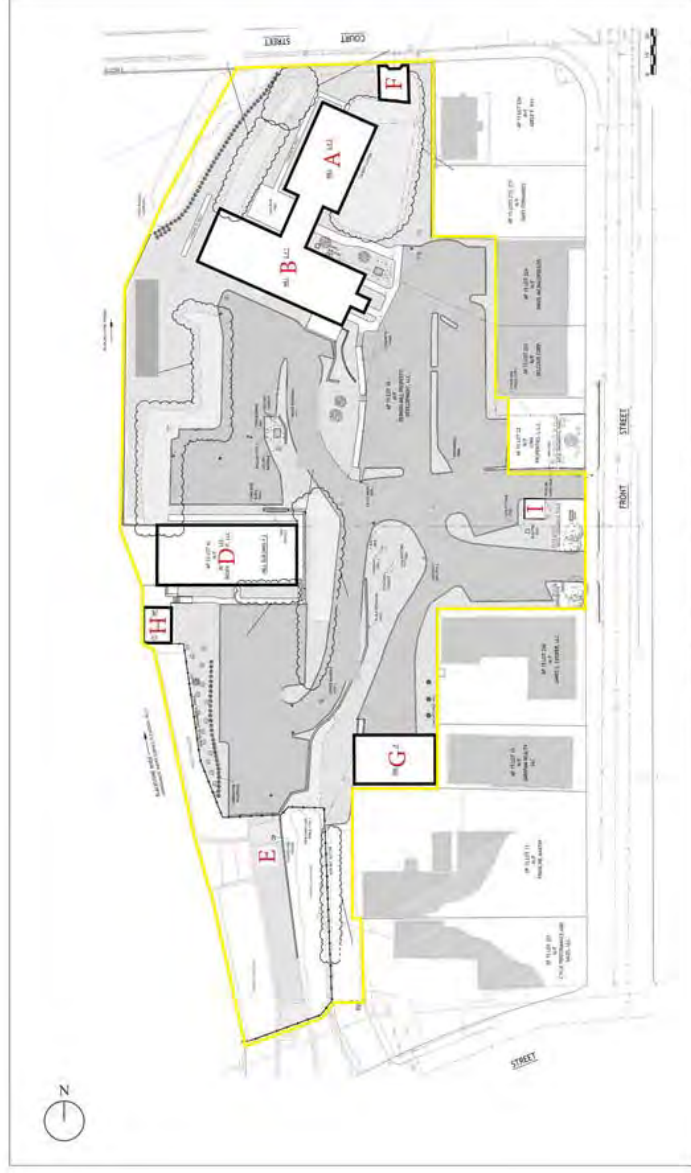












Woonsocket Company/Bernon Mills
Front Street
Woonsocket, Rhode Island 02895

National Park Service
National Register Nomination Amendment
Boundary Increase















Summary of additional documentation/changes

- Refine the district map with a more accurate boundary for the district and more accurate building footprints
- Update the building and structure count to remove the Power Plant and add the Power House, Garage, and Gate House
- Extend the period of significance to 1827-1968, to include not only the textile use of the property, but also its use as an electrical generating facility and explain that historic context
- Provide photographs of all of the buildings and structures