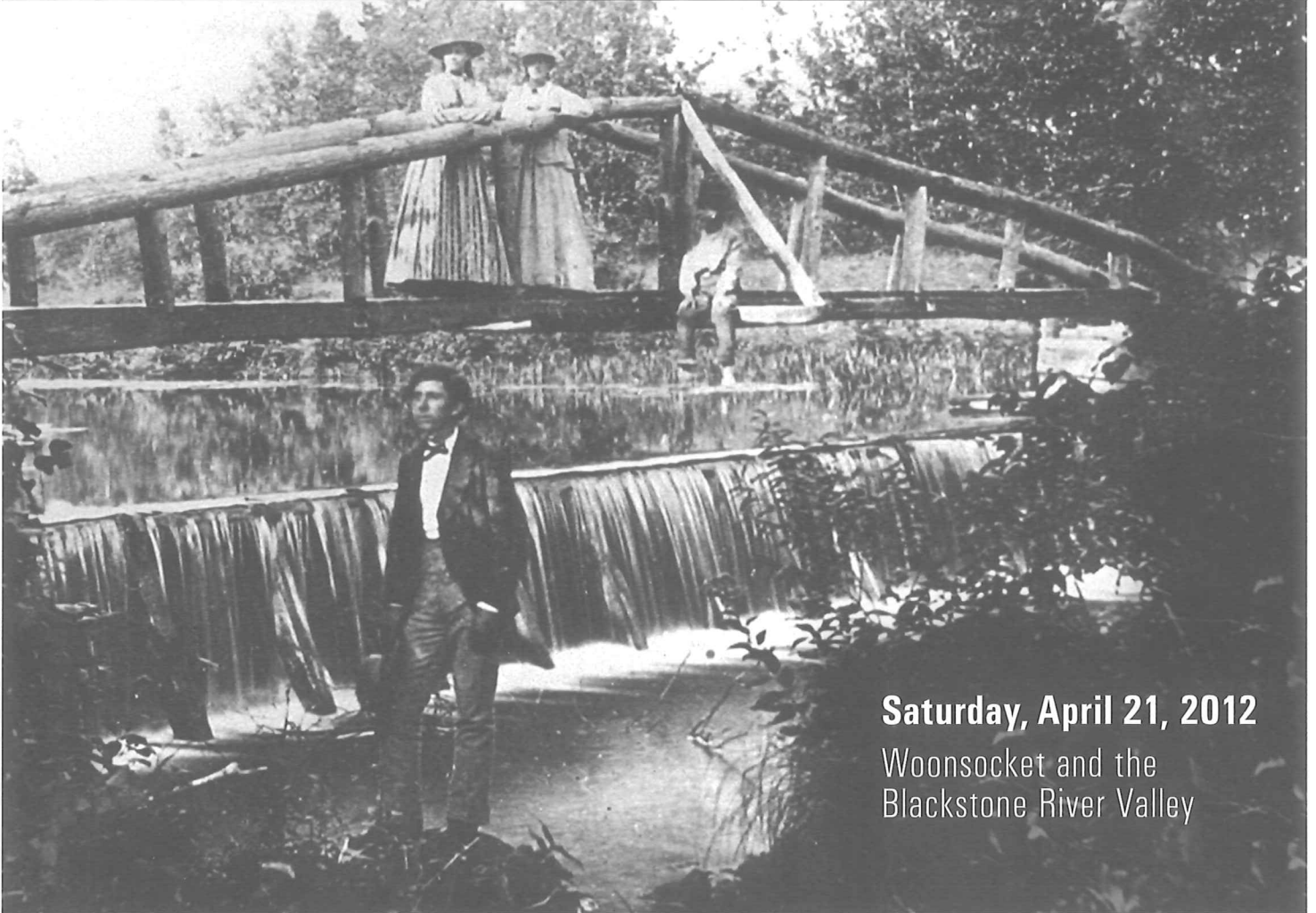


Heritage in America's Great Outdoors



Saturday, April 21, 2012
 Woonsocket and the
 Blackstone River Valley

The 27th Annual Rhode Island Statewide Historic Preservation Conference

Rhode Island Historical Preservation & Heritage Commission

Conference Agenda

9:00 - 10:45 am	BREAK	11:15 am - 12:30 pm	LUNCH	2:00 - 3:15 pm	BREAK	3:45 - 5:00 pm	5:00 - 6:00 pm
Opening Session Welcoming Remarks Keynote Address at Stadium Theatre	BREAK	Session A Consult program for sites	LUNCH at Father Marot CYO Center	Session B Consult program for sites	BREAK	Session C Consult program for sites	Closing Reception at St. Ann Arts & Cultural Center
		A Tours with lunch (11:15am-1:45pm)				B 3-hour tours (2:00-5:00pm)	



Opening Session

Welcoming remarks from

Mayor Leo T. Fontaine
City of Woonsocket

Maia Farish
Roger Williams University

Edward F. Sanderson
Executive Director, R.I. Historical Preservation & Heritage Commission (RIHPHC)

Introduction to Keynote Speaker by

Jan Reitsma
Executive Director, John H. Chafee Blackstone River Valley National Heritage Corridor (JHCBRVNHC)

Keynote Address

Heritage in America's Great Outdoors

Stephanie Smith Toothman, Ph.D.
Associate Director for Cultural Resources, National Park Service

America has changed dramatically since the birth of the National Park Service (NPS) in 1916. While the roots of the NPS lie in majestic natural wonders and in places that represent our cultural heritage, its reach now extends to places hard to imagine 100 years ago—into urban centers, across rural landscapes, deep within oceans, and across night skies. The National Park Service's second century will promote new initiatives like America's Great Outdoors to harness the collective power of the parks, historic preservation programs, and national heritage areas and to develop new partnerships that leverage additional resources.

Stephanie Smith Toothman was appointed Associate Director for Cultural Resources at the National Park Service in 2010. She is responsible for policies that affect the management of historic and cultural properties in all 394 national parks, including 27,000 historic structures, nearly 70,000 archaeological sites, and the largest system of museums in the world. She oversees the NPS's many community preservation programs for federal, tribal, state, and local governments and nonprofit organizations.

Toothman also directs initiatives including grants, the \$5 billion tax credit program, outreach programs, and documentation programs like National Historic Landmarks, National Register of Historic Places, Historic American Buildings Survey, and Cultural Resources GIS Survey. She manages the Native American Graves Protection and Repatriation Act, National Heritage Areas program, and Technical Preservation Services.

During her 34-year career with the National Park Service, Toothman has also served as Chief of Cultural Resources in the Pacific West, preservation planner in Washington, DC, and regional historian and acting superintendent at the National Mall and Memorial Parks during the 2009 inauguration. She graduated magna cum laude from Smith College and received her Master of Arts and Doctoral degrees in American Civilization from the University of Pennsylvania.



Welcome to the Stadium Theatre. Opened in 1926, the Stadium Theatre was designed by architects Perry & Whipple of Providence for local developer Arthur Darman. The deluxe moviehouse offered comfortable seats, spacious circulation areas, and elegant decoration—devised by designers Watts & Hutton of Providence and Abraham Anthony of Boston. In 1991, the “Save Our Stadium” campaign was launched, and after much fundraising and restoration, the Stadium Theatre Performing Arts Centre opened to great fanfare in 2001.

A1 Blackstone River Valley, from Corridor to Park

SITE ROOM 206, BEACON CHARTER HIGH SCHOOL

- Paula Brouillette, *Chair, Corridor Keepers*
- Margaret Carroll, *Citizen Advocate*
- Larry Lowenthal, *Historian, NPS (retired)*
- Jan Reitsma, *Executive Director, JHCBRVNHC*
- Edward F. Sanderson, *Executive Director, RIHPHC*
- Stephanie Smith Toothman, *Associate Director for Cultural Resources, NPS*

This session will trace forty years of work by citizens, local leaders, and the National Park Service to clean up and preserve nationally significant historic and natural resources in the Blackstone River Valley. Speakers will describe the origins of the heritage corridor and the current effort to establish a national historic park.



A2 Pedaling the Past: Bicycle Trails in Historic Places

SITE ROOM 410, BEACON CHARTER HIGH SCHOOL

- Lisa Aurecchia and Alicia Lehrer, *Woonasquatucket River Watershed Council*
- Bill DeSantis, *Corporate Director of Bicycle Transportation, Vanasse Hangen Brustlin, Inc.*
- Jeffrey Emidy, *Project Review Coordinator, RIHPHC*

Much of Rhode Island's growing network of bicycle trails retraces the old railroad lines, canal towpaths, and other routes that pass through and connect our historic places. In this session, we will discuss the process of planning, advocating, and designing recreational routes that promote heritage tourism while balancing the preservation of historic resources.



A3 Historic Preservation 101: Hands-On Learning at R.I. Colleges and Universities

SITE ROOM 302, BEACON CHARTER HIGH SCHOOL

- Students and faculty from *Brown University, Bryant University, Rhode Island College, Rhode Island School of Design, Roger Williams University, Salve Regina University, and University of Rhode Island*

At this session, college students report on a variety of unique and innovative educational programs, initiatives, and activities related to historic preservation, the interpretation of historic sites, and archaeology. Students are making a difference with hands-on projects from Providence and South County to the Mediterranean Basin. Learn about recent community/college partnerships and discuss a future project for your organization.

A4 Starring... The Stadium Theatre INDOOR WALKING TOUR

DEPARTS ON FOOT INSIDE STADIUM THEATRE LOBBY

- Roberta Randall, *Principal Historic Architect, RIHPHC*
- Jean Rondeau, *President, Stadium Theatre Foundation*

When the Stadium Theatre opened in 1926, it was described as "the show-place of Woonsocket." Reopened in 2001, thanks to the tireless efforts of volunteers and civic leaders, the Stadium continues to be a community treasure. This tour will discuss what it takes to run a 21st-century arts venue and go behind-the-scenes to explore theatre infrastructure from orchestra pit to projection booth.

A5 Steeple City: Woonsocket's Historic Houses of Worship BUS TOUR

DEPARTS ON BUS OUTSIDE BACK OF STADIUM THEATRE

- Mack Woodward, *Architectural Historian, RIHPHC*

The religious buildings of Woonsocket are the most visible manifestation of the community's diversity. This intriguing tour will explore the rich architectural and artistic legacy of the city's historic houses of worship.

A6 Making Main Street: History and Architecture WALKING TOUR

DEPARTS ON FOOT OUTSIDE FRONT OF STADIUM THEATRE

- Erik Eckilson, *Volunteer, Museum of Work and Culture*
- Kevin Klyberg, *Ranger, JHCBRVNHC*

The first in a series of walking tours of Woonsocket's historic Main Street investigates the growth of a small farming community into one of the 19th century's great industrial centers. Visit local landmarks including Monument Square (1870), Woonsocket Depot (1882), and Harris Hall (1856+) en route to the Museum of Work and Culture in the former Barnai Worsted Company Dye Works (1919).

11:15am – 1:45pm

A7 Making Main Street: History, Architecture, and Art WALKING TOUR with LUNCH*

DEPARTS ON FOOT OUTSIDE FRONT OF STADIUM THEATRE

- Irene Blais, *President, Woonsocket Historical Society*
- Brad Fesmire, *Program Director, RiverzEdge Arts Project*

See description for A6. Extend the tour for another hour, and fraternize with comrades over lunch in the 1930s Independent Textile Union Hall inside the Museum of Work and Culture. Then visit RiverzEdge Arts Project's mill studio, where local teens get hands-on work experience in graphic design, digital photography, screenprinting, and visual arts.

A8 Industry Makes Community: Whitinsville BUS TOUR with LUNCH*

DEPARTS ON BUS OUTSIDE BACK OF STADIUM THEATRE

- Valerie Paul, *Ranger, JHCBRVNHC*
- Dennis Rice, *Executive Director, Alternatives Unlimited, Inc.*

Beginning in the 1820s, the Whitin family developed the industrial community of Whitinsville, from its mills and factories to its worker housing and civic buildings. Hear the stories these buildings tell about American industrialization, the workers' lives, and social stratifications in a classic Blackstone Valley mill village. This tour includes lunch at the Whitin Mill, which incorporated renewable energy technologies in its award-winning rehabilitation.

A9 Here's Looking at You, Hopedale BUS TOUR with LUNCH*

DEPARTS ON BUS OUTSIDE BACK OF STADIUM THEATRE

- Peter Coffin, *Ranger, JHCBRVNHC*
- Michael Steinitz, *Director of Preservation Planning, Massachusetts Historical Commission*

Founded in 1841 as a small utopian settlement, Hopedale evolved into a paternalistic company town. Its tree-lined streets, abundant parks, stately buildings, and sprawling mill complex tell the unique story of this industrial community. This tour will also stop at the Blackstone River and Canal Heritage State Park in Uxbridge to see restored sections of the Blackstone Canal and Towpath, explore exhibits at the River Bend Farm Visitors Center, and eat lunch. Another stop will take in the historic buildings and landscape of Daniels Farmstead in Blackstone.

* NOTE: Tours A7, A8 and A9 are 2.5 hours long (11:15am-1:45pm) and include lunch.

B1 Local Communities and National Parks

SITE ROOM 206, BEACON CHARTER HIGH SCHOOL

Paulette Hamilton, *Administrator, Town of North Smithfield*
 Maia Small, *Partner, Thurlow Small Architecture*
 Joanna Doherty, *Community Planner, JHCBRVNHC*
 Jennifer Smith, *Site Manager, Roger Williams National Memorial, NPS*



Certification Maintenance

National parks don't exist in a vacuum—they are integral to the local communities that host them. Learn about successful collaborations between parks and local stakeholders, consider the impacts that parks have on host communities, and explore how a national park could be woven into the fabric of the Blackstone River Valley.

B2 Working Rivers: Balancing Restoration and Preservation

SITE ROOM 302, BEACON CHARTER HIGH SCHOOL

Christopher Fox, *Executive Director, Wood Pawcatuck Watershed Association*
 Frank Matta, *Board Member, Blackstone River Watershed Council/Friends of the Blackstone*
 Donna Williams, *President, Blackstone River Coalition*

Since the Clean Water Act was passed in 1972, we have made tremendous progress in restoring our waterways while understanding the critical need to protect and celebrate our industrial heritage. Now it is time to encourage people, fish, and birds to flock to our rivers. Using the Blackstone and Wood-Pawcatuck as case studies, this session will highlight the Clean by 2015 Campaign, river access programs that encourage recreational opportunities, and historic dam/fish ladder projects.

B3 Final Destinations: Three Perspectives on Cemetery Preservation

SITE ROOM 410, BEACON CHARTER HIGH SCHOOL

Martha Lyon, *ASLA, Principal, Martha Lyon Landscape Architecture*
 Valerie Paul, *Ranger, JHCBRVNHC*
 Charlotte Taylor, *Senior Archaeologist, RIHPHC*

Cemeteries are more than peaceful resting places—they are important historic resources. Hear a landscape architect's perspective on cemeteries as designed landscapes, and how best to maintain them today. Learn about how to organize volunteers to do hands-on work restoring cemeteries. And review the laws protecting historic cemeteries, the work of the Rhode Island Cemeteries Commission, and how archaeology plays a part in the protection and study of historic burial sites.

B4 Old is the New Green: Preservation and Sustainability in the 21st Century

SITE ROOM 416, BEACON CHARTER HIGH SCHOOL

Holly Grosvenor, *AIA, LEED AP, Associate, Northeast Collaborative Architects*
 Dennis Rice, *Executive Director, Alternatives Unlimited, Inc.*
 Stephen Tilly, *AIA, LEED AP, Principal, Stephen Tilly Architect*
 Martha Werenfels, *AIA, LEED AP, Principal, Durkee, Brown, Viveiros & Werenfels Architects*

Reusing historic buildings—as opposed to sending them to the landfill—is increasingly important as our natural resources dwindle. This session will explore ways to preserve historic buildings while introducing the technologies that ensure healthy and sustainable communities. Topics will include embodied history as well as embodied energy, hydropower, and passive climate controls. Attendees will learn why saving historic buildings must be at the center of the green movement, not on the periphery.

PRESENTED BY AIA/RI

B5 Remaking Main Street: Policy and Planning WALKING TOUR

DEPARTS ON FOOT OUTSIDE FRONT OF STADIUM THEATRE

Mayor Leo T. Fontaine, *City of Woonsocket*
 Ainsley Morrisseau Cantoral, *Director of Resource Development and Communications, NeighborWorks Blackstone River Valley*
 Matt Wojcik, *Economic Development Director, City of Woonsocket*
 Carrie Zaslow, *Program Officer, R.I. Local Initiatives Support Corporation*



Certification Maintenance

The story of Main Street continues with Woonsocket's efforts to encourage new economic development. The Main Street/Riverfront Initiative builds on the success of anchor sites with programs like LISC's Corridors of Retail Excellence. Take a walk with Mayor Fontaine and non-profit leaders to discuss how efforts to cultivate small businesses are strengthening Woonsocket's downtown.

2:00 – 5:00pm

B6 Bike Blackstone BICYCLE TOUR*

DEPARTS ON BIKE OUTSIDE BACK OF STADIUM THEATRE

Bill DeSantis, *Corporate Director of Bicycle Transportation, Vanasse Hangen Brustlin, Inc.*

Thirty years ago, visionaries imagined a Blackstone River Bikeway stretching 48 miles from Worcester to Providence and connecting local historic, recreational, and natural resources. To date, 10.3 miles have been completed in Rhode Island and 2.5 in Massachusetts. Experience the Blackstone River on two wheels to learn firsthand about planning and design of this unique resource.

B7 Ashton and Slater Mill BUS TOUR*

DEPARTS ON BUS OUTSIDE BACK OF STADIUM THEATRE

Virginia Hesse, *Principal Historic Architect, RIHPHC*
 Albert T. Klyberg, *Historian*

This tour investigates how Samuel Slater's innovative installation of a water-powered cotton-spinning system in Pawtucket kicked off America's industrial development. Visit Slater Mill (1793) and Wilkinson Mill (1810) to learn about early textile and machine manufacturing. Also explore the village of Ashton which grew into an important industrial community as canal and railroad transportation brought its products to worldwide markets.

B8 Slater Mill, Slatersville, and the Roots of Industrial America BUS TOUR*

DEPARTS ON BUS OUTSIDE BACK OF STADIUM THEATRE

Rick Greenwood, *Deputy Director, RIHPHC*
 Kevin Klyberg, *Ranger, JHCBRVNHC*
 Andrian Paquette, *Curator, Slater Mill Museum*

Explore the legacy of the Slater family and formative role in American industrialization. In 1793, Samuel Slater built America's first successful water-powered cotton spinning mill in Pawtucket. About 14 years later, Samuel and his brother John created America's first planned mill village in North Smithfield. Just as Slater Mill provided the prototype for the textile factory, the community of Slatersville—with its mill, worker housing, church, and company stores—became a model for industrial towns across the Blackstone Valley and along the east coast.

B9 It Was the Best of Times, It Was the Worst Times: 200 Years of Woonsocket Architecture BUS TOUR*

DEPARTS ON BUS OUTSIDE BACK OF STADIUM THEATRE

Ray Bacon, *Co-Director, Museum of Work and Culture*
 Jeffrey Emidy, *Project Review Coordinator, RIHPHC*

Led by two Woonsocket natives, this tour will provide an overview of the places where the city's residents have lived, worked, worshipped, played, and rested eternally. They will tell the story of the city's development from 18th-century agricultural outlier to 20th-century textile center—and beyond.

* NOTE: Tours B6, B7, B8 and B9 are 3 hours long (2:00–5:00pm)

C1 Out and About in the Great Outdoors

SITE ROOM 206, BEACON CHARTER HIGH SCHOOL

Teresa Bisson, *Programming Services Officer, RI-DEM*
Debra Reddy, *Physical Education Teacher, Northern Lincoln Elementary School*
Jan Reitsma, *Executive Director, JHCBRVNH*

These presentations discuss the unique combination of history, nature, education and recreation that we experience outdoors in the Blackstone Valley. Panelists consider the value of these resources, and explore the opportunities and benefits that are created when multiple disciplines and constituencies form partnerships in pursuit of a common agenda. Review federal and state initiatives that focus on the outdoors and discuss how the Blackstone Valley can showcase and take advantage of, these initiatives.

C2 Ceremonial Landscapes & Battlefields at Nipsachuck in King Philip's War, 1675-76

SITE ROOM 302, BEACON CHARTER HIGH SCHOOL

Doug Harris, *Preservationist for Ceremonial Landscapes, Narragansett Indian Tribal Historic Preservation Office*
Paul Robinson, *Adjunct Professor of Anthropology, Rhode Island College*
Charlotte Taylor, *Archaeologist, RIHPHC*

This research collaboration between the RIHPHC, the Narragansett Indian Tribal Historic Preservation Office, and the Blackstone Valley Historical Society aims to identify and protect the King Philip's War (1675-76) battlefield landscape at Nipsachuck in northern Rhode Island. Funded by the American Battlefield Protection Program of the National Park Service, the project examines the relationship between Nipsachuck as a place of indigenous ceremony and Nipsachuck as a place of war. Panelists will present their research and discuss the potential of such places and landscapes for education and tourism.

C3 Rehabilitating the Preservation Tax Credits

SITE ROOM 416, BEACON CHARTER HIGH SCHOOL

Joe Garlick, *Executive Director, NeighborWorks Blackstone River Valley*
Christian J. Ladds, *AIA, LEED AP, Principal, LLB Architects*
Val Talmage, *Executive Director, Preserve Rhode Island*
Scott Wolf, *Executive Director, Grow Smart Rhode Island*



In the past ten years, \$1.3 billion was invested in renovating 208 historic buildings in Rhode Island. Since the State stopped new applications for historic rehab tax credits, preservationists have been working to restart the program. Pressure is mounting on the General Assembly to pass a new rehab tax credit in 2012. Catch up on recent projects in Pawtucket and Burrillville and get the latest news about what's in this year's bills, who's pushing for passage from Mayors to Labor, and what you can do.

C4 It's My Story Too: Youth-driven Heritage Programs

SITE ROOM 410, BEACON CHARTER HIGH SCHOOL

Lisa Milano Kuffner, *Co-creator, Ocean State Environmental Education Collaborative's Central Falls Environmental Education Program*
Bekah Greenwald Speck, *Executive Director, RiverzEdge Arts Project*
Rubby Wuabu and Alex Gicas, *Creators, Worcester's Blackstone Canal Horse and Wagon Tours*

In Worcester, high school students developed a horse-drawn wagon tour to relate their perspectives as immigrants to the experiences of the Irish immigrants who built the Blackstone Canal and of the many who followed. In Woonsocket, local teens are applying hands-on training in design and interpretation to build a working canal lock and boat and to tell the story of communities of color in the Blackstone Valley. Learn why local youth have a lot to say about local history.

C5 Restoring Main Street: Recent Rehabs WALKING TOUR

DEPARTS ON FOOT OUTSIDE FRONT OF STADIUM THEATRE

Roberta Randall, *Principal Historic Architect, RIHPHC*
Al Valliere, *Chairperson, Woonsocket Main Street Riverfront Initiative*

The final Main Street walk visits several preservation and streetscape enhancement projects to demonstrate how these investments are improving Downtown Woonsocket and its riverfront, block by block. Sites may include Beacon Charter High School, Woonsocket Depot, Honan Block, Museum of Work and Culture, Falls Yarn Mill, and others.

On Exhibit 8:15am–5:00pm

Visit the exhibits of conference sponsors and partners throughout the day at the Beacon Charter High School for the Arts. Founded in 2003, the school has been located in the ca. 1920s Kane's Furniture Company Building on Woonsocket's Main Street since 2006. Beacon provides a quality education focused on culinary, theatre, or visual arts as well as practical business experience.

At Lunch 12:30–2:00pm

Lunch will be held at the Father Marot CYO Center, behind the Stadium Theatre. This brick and limestone building was erected around 1928 as the headquarters of the Independent Textile Union. Since 1971, it has served as a CYO center to host youth programs and activities for the Roman Catholic Diocese of Providence.

Closing Reception 5:00–6:00pm

Catch up with friends and colleagues at St. Ann Arts & Cultural Center, called the "Sistine Chapel of America" by Yankee Magazine. The former Roman Catholic Church was built between 1913 and 1917 by French-Canadian immigrants to serve the religious and social needs of their community. The modern French Renaissance-style building features more than 40 stained glass windows installed in the 1920s and an interior decorated with fresco paintings by Italian-Canadian artist Guido Nincheri.

This publication was financed in part with a Federal grant administered by the Rhode Island Historical Preservation and Heritage Commission, which receives federal funds from the National Park Service, US Department of the Interior. However, the contents and opinions do not necessarily reflect the views or policies of the Department of the Interior.

Regulations of the US Department of Interior strictly prohibit discrimination in departmental Federally assisted programs on the basis of race, color, national origin, disability or age in its federally assisted programs. Any person who believes he or she has been discriminated against in any program, activity, or facility as described above, please write to Office of Equal Opportunity, US Department of the Interior, National Park Service, 1201 Eye Street NW, 6th Floor, Washington, DC 20005.

Thank you



RI Historical Preservation & Heritage Commission



Architectural Preservation Group

John H. Chafee
BLACKSTONE RIVER VALLEY
National Heritage Corridor Commission



6

Rhode Island Historical Preservation & Heritage Commission

The Rhode Island Historical Preservation & Heritage Commission is the state agency for historical preservation and heritage programs. The commission operates a statewide historical preservation program that identifies and protects historic resources, and it carries out programs to document and celebrate the cultural heritage of Rhode Island's people.

City of Woonsocket

Woonsocket assumed its present boundaries in 1871, when three mill villages from Smithfield were joined to three mill villages from Cumberland. Incorporated in 1888, Woonsocket became one of America's leading textile centers as well as a significant producer of rubber goods and machinery. Preservation projects have revitalized Woonsocket's historic Main Street, restored several mills for new housing, strengthened its neighborhoods, and enhanced key cultural facilities.

John H. Chafee Blackstone River Valley National Heritage Corridor

Designated by Congress in 1986, the Heritage Corridor includes 24 cities and towns on 500 square miles of land in the Blackstone River watershed. The Corridor Commission works with Federal, State, and local partners to protect Blackstone Valley sites and resources and to maintain its special sense of place.

Museum of Work and Culture, a division of the Rhode Island Historical Society

Managed by the Rhode Island Historical Society, the Museum of Work and Culture is a community museum supported by volunteers, the City of Woonsocket, and the John H. Chafee Blackstone River Valley National Heritage Corridor Commission. It exhibits the culture of French-Canadian residents, the broad story of the other ethnic communities of the Valley, and the role that work and organized labor played in the shaping of these Rhode Islanders' lives.

Woonsocket Historical Society

The Woonsocket Historical Society was founded in 1927 to preserve the history of the City of Woonsocket, its people, and its rich industrial past. By collecting, preserving, and exhibiting historic materials, the Society educates and engages a diverse community. The Woonsocket Historical Society strives to provide a variety of programs that make history meaningful, accessible, and enjoyable.

A4 Architecture + Planning

A4 Architecture + Planning is a full-service architecture firm that specializes in high-quality residential, commercial, and institutional design. Recent projects include designs for Washington Square's historic streetscape, the restoration of Oakwood Mansion, and renovations at the Newport Casino. A4 Architecture is committed to historic preservation and sustainable design.

Abcore Restoration Co., Inc.

Abcore Restoration is a restoration contracting firm founded in Providence in 1981. The company has worked with SWAP and Providence Revolving Fund on projects in Elmwood, West Side, and South Providence. Now based in Narragansett, Abcore's recent projects include Narragansett Towers, Fort Hamilton, Kinney Bungalow, Plum Beach Light and Pomham Rocks Light.

American Institute of Architects/ Rhode Island

Founded in 1875, AIA/Rhode Island is the seventh oldest component of a 75,000-member national organization of licensed architects and associated professionals. The 280 professional and 50 affiliate members of AIA/Rhode Island maintain a commitment to leadership of the profession and quality, consistency, and safety in the built environment.

Architectural Preservation Group

Since 1979, Warwick-based Architectural Preservation Group has set the standard for restoration contracting in southern New England.

Belvoir Properties, Inc.

A commercial and residential developer based in Providence, Belvoir Properties has completed several rehabilitation projects. In 2008, Rosedale Landing received a R.I. State Preservation Award. Erected in 1939 on the shores of Narragansett Bay, the Streamline Moderne apartment complex was restored and updated with the latest technology and conveniences.

Blackstone Valley Tourism Council

Founded in 1985, the Blackstone Valley Tourism Council is a non-profit regional tourism agency for the communities of Burrillville, Central Falls, Cumberland, Glocester, Lincoln, North Smithfield, Pawtucket, Smithfield, and Woonsocket. The Council aims to create positive change with regard to community values by developing and promoting coordinated, responsible, and sustainable tourism in Rhode Island's Blackstone Valley communities.

Conway Tours

Conway Tours is a family owned and operated firm headquartered in Cumberland. Celebrating 86 years in business, Conway is one of New England's leading tour companies, providing travelers with quality and value. Their Classic Conway Getaways offer daytrips and weekend tours, and their Blue Diamond Series includes more comprehensive vacation packages.

Cornish Associates

Cornish Associates is a specialized real estate development company dedicated to New Urbanism and responsible development. With eight award-winning historic rehab projects creating 196 apartments, plus restaurants, offices, and shops, Cornish has made a substantial commitment to the ongoing revitalization of Downtown Providence.

Durkee, Brown, Viveiros & Werenfels Architects, Inc.

Founded in 1994, Durkee, Brown, Viveiros & Werenfels Architects is an award-winning architectural firm located in Providence. The firm's broad range of projects includes the preservation and adaptive re-use of historic structures, the design of commercial and institutional buildings, and the creation of affordable, neighborhood housing.

Thank you



GREENVALE
Vineyards



LLB ARCHITECTS



E.F. O'Donnell & Sons

E.F. O'Donnell & Sons has provided painting and restoration services since 1900. The company is involved in restoring numerous historic buildings throughout the area, including the John Brown House, Rhode Island State House, and St. Mary's Church in Bristol. RIHPHC and Preserve RI presented the Frederick C. Williamson Professional Service Award to Robert O'Donnell in 2009.

E.W. Burman, Inc.

E.W. Burman, Inc. is a full-service general construction and construction management firm active throughout southern New England. Over the past 45 years, the company has completed public, medical, administrative, educational, retail, and manufacturing projects. E.W. Burman's notable historic preservation work includes the Hotel Providence, Miramar, and the Corliss-Brackett House.

Gates, Leighton & Associates, Inc.

Based in East Providence, Gates, Leighton & Associates, Inc. (GLA) is a professional landscape architectural consulting firm serving clients throughout New England and in select international locations. Their projects at historic sites include designs for Woonsocket's Market Square, Valley Falls Park, and a colonial kitchen garden for the Sylvanus Brown House at Slater Mill.

Greenvale Vineyards

Listed on the State and National Registers of Historic Places, Greenvale Farm and Vineyards is located along the Sakonnet River in Portsmouth. Greenvale is open daily for visitors to tour the vineyards and sample estate-grown wine in the award-winning restored stable turned tasting room.

Historic New England

Historic New England is a wide-ranging museum of cultural history that collects and preserves buildings, landscapes, and objects dating from the seventeenth century to the present. The organization manages thirty-six historic sites in five states, more than 110,000 objects representing regional decorative arts and furnishings, and a library of more than one million items. HNE's staff works with owners of historic homes and advocates for the preservation of significant New England residential resources.

John Nicholas Brown Center for Public Humanities and Cultural Heritage

The John Nicholas Brown Center for Public Humanities and Cultural Heritage at Brown University supports the people and organizations that create, explore, preserve, and interpret culture and cultural heritage, and strengthens links between universities, cultural organizations, and communities through public programming and the innovative M.A. program in public humanities.

LLB Architects

As a multidisciplinary and forward-thinking architectural firm, LLB Architects has been contributing new opportunities within the rich context of our built environment for 75 years. The firm has earned Rhode Island State Preservation Awards for its work at Philip Johnson's Brown University Computing Laboratory and Blessed Sacrament Parish in Providence.

Newport Architectural Forum

The Newport Architectural Forum was founded in 2007 as a group within the membership of the Newport Art Museum that is dedicated to the art of architecture. The organization hosts or co-sponsors lectures, conferences, tours, and exhibitions on architecture and related topics each month.

Northeast Collaborative Architects

In 2011, Newport Collaborative Architects and Bianco Giolitto Weston Architects merged to establish Northeast Collaborative Architects, LLC. NCA maintains offices in Newport and Providence, RI and Middletown, CT. The firm specializes in a wide range of projects including preservation, education, hospitality, commercial, civic, medical, and residential.

O'Hearne Associates Architects

O'Hearne Associates Architects specializes in design and site planning for projects of all types, including residential, religious, commercial, site planning, and institutional. O'Hearne's historic preservation work includes conversion of several Ann & Hope mill houses into affordable housing in Cumberland, rehabilitation of a historic house in Providence, and the adaptive reuse of the Hope Street School in Woonsocket for a childcare center. The last project received a State Preservation Award in 2009.

PAL

The Public Archaeology Laboratory is New England's leading consultant firm in cultural resource management and specializes in terrestrial and marine archaeology, architectural history, research and documentation, and preservation planning.

Preserve Rhode Island

Chartered in 1956, Preserve Rhode Island is the statewide non-profit historic preservation organization that provides education and advocacy to protect Rhode Island's historic structures and unique places for future generations.

Providence Preservation Society

Since 1956, the Providence Preservation Society has grown from a small grassroots network to a prominent citywide preservation, advocacy, and education organization. PPS plays an active role in neighborhood and commercial revitalization, planning, zoning, and architectural review for the dynamic city of Providence.

Rhode Island APA

The Rhode Island Chapter of the American Planning Association is a non-profit public interest and research organization dedicated to urban, suburban, regional, and rural planning. Its mission is to shape the planning profession by providing a forum for the understanding and application of sound planning principles in Rhode Island.

Roger Williams University School of Architecture, Art and Historic Preservation

The Roger Williams University School of Architecture, Art and Historic Preservation is a diverse community of students and faculty dedicated to the creation and stewardship of the built and cultural environments. RWU faculty, alumni, and students are important contributors to the work of historic preservation in Rhode Island.

Thank you



Southwick's Zoo



Salve Regina University

Founded by the Sisters of Mercy, Salve Regina University is an independent institution in the Catholic tradition of education, providing higher education to men and women. Salve offers an undergraduate program in Cultural and Historic Preservation, encompassing architectural history, historical archaeology, and preservation planning.

Southwick's Zoo

In the 1930s, Justin F. Southwick began to collect fancy poultry at his farm in Mendon, Massachusetts. His family opened Southwick Wild Animal Farm in 1963. Acquired by the Brewer family in 1981, Southwick's Zoo has an extensive zoological collection of more than 500 wild animals and a wide-ranging educational program. The Brewer family also is closely involved with the stewardship of Daniels Farmstead, a historic site in Blackstone, Massachusetts.

The Foundry Associates The Promenade

The Foundry Corporate Office Center converted eight buildings in the historic Brown & Sharpe complex (1872+) into nearly 500,000 square feet of office space and converted three additional buildings into 220 luxury apartments in the Promenade. Their current project is 25 Holden Street.

The Preservation Society of Newport County

Rhode Island's largest cultural organization, the Preservation Society of Newport County preserves and protects three centuries of the finest achievements in American architecture, decorative arts, and landscape design spanning the Colonial era to the Gilded Age. There were 812,396 total visits to the Newport Mansions last year.

The Washington Trust Company

Founded in 1800, Washington Trust is the largest independent bank in Rhode Island and the oldest community bank in the nation. Washington Trust offers a full range of financial services, including business banking, personal banking, and wealth management and trust services.

Weekapaug Inn

In 1899, the gracious Weekapaug Inn opened its doors for its first summer season. Following the hurricane of 1938, the inn was rebuilt on a new location along the edge of a saltwater pond and steps from the Atlantic Ocean. Today the Weekapaug Inn is undergoing a dramatic renovation that will make the inn green and energy efficient while retaining its historic character.

West River Center

The West River Center in Providence rehabbed the former Rhode Island Tool Complex (1861+) for 107,000 square feet of state-of-the-art office space and a café. Developer Amaral Revite is currently at work on the conversion of Church Hill Grammar School in Pawtucket into office space and a new phase of the West River Center project.

Sponsored by

Rhode Island Historical Preservation & Heritage Commission

City of Woonsocket

John H. Chafee Blackstone River Valley National Heritage Corridor

The Museum of Work and Culture, a division of the Rhode Island Historical Society

Woonsocket Historical Society

A4 Architecture + Planning

AIA/Rhode Island

Abcore Restoration Co. Inc.

Architectural Preservation Group

Belvoir Properties, Inc.

Blackstone Valley Tourism Council

Conway Tours

Cornish Associates

Durkee, Brown, Viveiros & Werenfels Architects

E.F. O'Donnell & Sons Co.

E.W. Burman

Gates, Leighton & Associates

Greenvale Vineyards

Haynes/de Boer Associates Architects

Historic New England

John Nicholas Brown Center for Public Humanities and Cultural Heritage

LLB Architects

National Park Service

Newport Architectural Forum

Northeast Collaborative Architects

O'Hearne Associates Architects

PAL

Preserve Rhode Island

Providence Preservation Society

Rhode Island APA

Roger Williams University School of Architecture, Art and Historic Preservation

Salve Regina University

Southwick's Zoo

The Foundry Associates

The Promenade

The Preservation Society of Newport County

Urban Smart Growth

Weekapaug Inn

West River Center

In cooperation with

Alternatives Unlimited, Inc.

Beacon Charter High School for the Arts

Blackstone River Coalition

Blackstone River Watershed Council/Friends of the Blackstone

Bryant University

Corridor Keepers

Father Marot CYO Center

Grow Smart Rhode Island

LLB Architects

Lincoln School Department

Martha Lyon Landscape Architecture

Massachusetts Historical Commission

Meeting Mavens

Narragansett Indian Tribal Historic Preservation Office

NeighborWorks Blackstone River Valley

Rhode Island College

Rhode Island Department of Environmental Management

Rhode Island Local Initiatives Support Corporation

Rhode Island School of Design

RiverzEdge Arts Project

Slater Mill Museum

St. Ann Arts & Cultural Center

Stadium Theatre Foundation

Stephen Tilly Architect

This is MYCity!

Thurlow Small Architecture

Town of North Smithfield

University of Rhode Island

Vanasse Hangen Brustlin, Inc.

Wood-Pawcatuck Watershed Association

Woonasquatucket River Watershed Council



Rhode Island Historical Preservation & Heritage Commission

150 Benefit Street

Providence, RI 02903

www.preservation.ri.gov

401.222.2678

Images courtesy of Joseph E. Coduri, Museum of Work and Culture, and John H. Chafee Blackstone River Valley National Heritage Corridor