

The 14th Annual Rhode Island Statewide
Historic Preservation Conference

**LIVING AND WORKING WITH
PRESERVATION:
EXPLORE THE PAST - ENVISION THE FUTURE**

Saturday, April 10, 1999

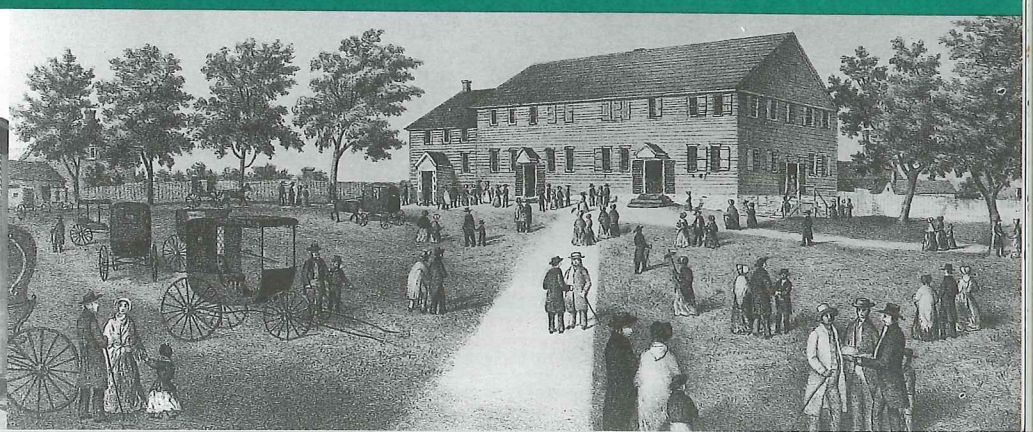
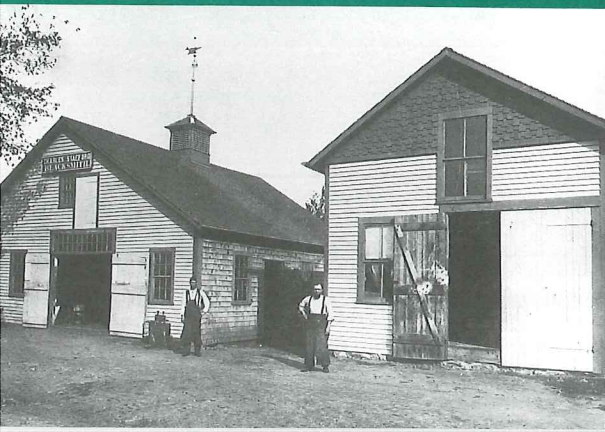
Naval War College, Newport, Rhode Island

Advance registration required by April 2

Please see registration form on inside back cover

Sponsored by:

- Rhode Island Historical Preservation & Heritage Commission •
- City of Newport • Dunn Foundation • Grow Smart Rhode Island • Heritage Trust of Rhode Island •
- National Trust for Historic Preservation • Newport Historic District Commission •
- Newport Historical Society • Preservation Society of Newport County •
- Rhode Island Foundation •
- Roger Williams University School of Architecture, Historic Preservation Program •



LIVING AND WORKING WITH PRESERVATION

EXPLORE THE PAST - ENVISION THE FUTURE

Historic Preservation has evolved from rescuing a few key landmarks and districts to a much broader and more encompassing vision. Today the concerns of the preservation movement help to maintain both the physical and cultural identities of the areas where we live and work. Helping to revitalize entire communities by preserving historic neighborhoods, stimulating investment in downtown areas, conserving open spaces, and developing and promoting heritage tourism are some of the ways we integrate preservation into our everyday lives.

Join us for the 1999 Statewide Historic Preservation Conference in exploring our past achievements and history while examining the key elements and strategies of today's preservation issues that will guide us in the future.

CONFERENCE AGENDA

8:15-9:00 a.m.	REGISTRATION <i>Spruance Hall</i> <i>Naval War College</i>	12:30-1:30 p.m.	LUNCH & EXHIBITS <i>Officers' Club</i> <i>Naval War College</i>
9:00-10:40 a.m.	WELCOMING REMARKS KEYNOTE ADDRESS: <i>MOONLIGHT, MAGNOLIAS & THE</i> <i>MILLENNIUM: a Charleston, SC</i> <i>Perspective on Historic Preservation</i> Dr. Carter L. Hudgins	1:30-3:00 p.m.	FIRST AFTERNOON SESSIONS <i>Officers' Club &</i> <i>Downtown Newport</i>
	1999 STATE HISTORIC PRESERVATION AWARDS	3:00-3:30 p.m.	BREAK
		3:30-5:00 p.m.	SECOND AFTERNOON SESSIONS <i>Downtown Newport</i>
10:40-11:00 a.m.	COFFEE BREAK	5:00-6:00 p.m.	CLOSING RECEPTION <i>Colony House</i> <i>Washington Square</i>
11:00-12:30 p.m.	MORNING SESSIONS <i>Officers' Club</i> <i>Naval War College</i>		

Shuttle service will be available between downtown locations and the parking area at the Naval War College.

Keynote speaker Dr. CARTER L. HUDGINS, an historian, preservation specialist, educator, and author has served as Executive Director of Historic Charleston Foundation since 1994. Dr. Hudgins previously served as director of the Center for Historic Preservation and Prince B. Woodward Professor of Historic Preservation at Mary Washington University. He holds graduate degrees in early American history, historic preservation, and archaeology.

Dr. Hudgins' professional activities include service as an officer and trustee of the Vernacular Architecture Forum and editor of its publication Perspectives in Vernacular Architecture, Trustee of the U.S. Committee of the International Committee on Monuments and Sites, and member of the Board of Directors of Preservation Action.

Dr. Hudgins has studied and written extensively about preservation and growth management, 18th century culture, historic American architecture and North and South American archaeology. His international studies and work have included research and archaeological investigation in Brazil, Ireland, England, Russia, and Israel.

Morning Sessions 11:00 a.m. - 12:30 p.m.

A1 CULTIVATING STEWARDSHIP: THE DIPLOMACY OF PRESERVATION

Moderator: Pamela Kennedy, Deputy Director, RIHP&HC
David S. R. Andreozzi, Chair, Bristol Historic District Commission
Trudy Coxe, Chief Executive Officer, Preservation Society of Newport County
John M. Roney, Rhode Island State Senator

How do you create support for preservation within your community? What lessons can be learned from the preservation movement's successes and failures? Explore issues and strategies that can cultivate a positive image of preservation efforts and develop the support of the local community.

A2 ISSUES IN AUTHENTICITY 1: THE RESEARCH & INTERPRETATION OF HISTORIC SITES

Moderator: Richard Greenwood, Ph.D., Project Review Coordinator, RIHP&HC
Chuck Arning, Ranger, Blackstone River Valley National Heritage Corridor Commission, National Park Service
Myron Stachiw, Adjunct Faculty, Roger Williams University, Historic Preservation Program
John Tschirch, Architectural Historian, Preservation Society of Newport County
Joan Youngken, Associate Director, Newport Historical Society

The history of a structure or site provides the basis for its interpretation and gives direction to its restoration. What are the means of discovering the lost history of a site beyond the obvious? And, once that history is found, how can it be applied?

A3 DISCOVERING UNDERWATER ARCHAEOLOGY

D. K. Abbass, Ph.D., President, Rhode Island Marine Archaeology Project
Hear how the Rhode Island Marine Archaeology Project (RIMAP) has been locating, identifying, and protecting the submerged cultural resources of RI. This slide-illustrated presentation will explore the techniques and objectives of underwater archaeology and show some RIMAP projects, including the discovery of Revolutionary War shipwrecks and the reputed slave ship *Gem* in Newport Harbor.

A4 RESTORING PUBLIC SPACES AND MAINTAINING COMMUNITY IDENTITY

Moderator: David P. Leach, Executive Director, The Dunn Foundation
Dorothy Devine, President, Saugatucket River Heritage Corridor
Lillian Dick, Chair, Washington Square Advisory Commission
Linda Ozga, Westerly/Pawcatuck Downtown Manager, Joint Development Task Force
Historic public parks and squares, waterways, and the farmlands and natural areas surrounding towns and villages play a major role in creating each community's unique "sense of place." How can your city or town emphasize and capitalize on these assets? Learn about local efforts around the state to preserve and restore the spaces that help define community character.

A5 THE POINT NEIGHBORHOOD: WALKING TOUR

Ronald Potvin, Curator of Special Collections, Newport Historical Society
Ingrid Hattendorf, Director of Education, Newport Historical Society
Built up mainly in the 18th century, the Point Neighborhood includes mansions like the 1748 Hunter House as well as restored historic houses lived in by Newporters today. Explore this area's rich history and architecture and learn about current neighborhood preservation issues.

A6 NEWPORT'S RELIGIOUS HERITAGE: WALKING TOUR

Robert O. Jones, Architectural Historian, RIHP&HC
Pieter N. Roos, Executive Director, Newport Restoration Foundation
Establishment of religious freedom in Rhode Island resulted in Newport's extraordinary legacy of churches, meeting houses, and synagogues. Join tour leaders for a walking tour of Newport's religious heritage.

A7 NEWPORT'S AFRICAN AMERICAN SITES: WALKING TOUR

Theresa Guzman Stokes, Writer
Richard C. Youngken, Planning Director & Associate, Newport Collaborative Architects
The history of African Americans in the City of Newport reaches back over 300 years. Based on recent research, this walking tour will explore that rich history and show how it is manifested in the built environment of Newport's Hill District.

A8 THE ISAAC BELL HOUSE: BUS TOUR

Paul Miller, Curator, Preservation Society of Newport County
Charles Jeffers Moore, Chief Conservator, Preservation Society of Newport County
The Isaac Bell House (1882-1885) designed by McKim, Mead, and White, has been cited as the most important Shingle Style structure in the United States. This tour will explore its history as well as on-going efforts by the Preservation Society of Newport County to restore the grandeur of this National Historic Landmark.

Photographic and graphic images:

Interior of John N.A. Griswold House/Newport Art Museum. Jack Boucher, photographer, HABS Survey, 1969.
Charles Stafford Blacksmith Shop, Farewell St, Newport. Providence Public Library, 1903.
Whitehall Historic District, Middletown. RIHP&HC, 1979.
"Little Clifton Berley", Ocean Avenue, Newport. RIHP&HC, 1976.
Friends' Meeting House, Newport. John Collins, lithographer, Rhode Island Historical Society, 1857.
Newport in 1730. J.P. Newell, lithographer, Rhode Island Historical Society, 1865.

The Naval War College Museum on the NWC Campus will be open for self-guided tours from 11:00 a.m. to 4:00 p.m.

First Afternoon Sessions 1:30-3:00 p.m.

B1 CLG SHOWCASE: INNOVATIVE PROJECTS

Moderator: Tina Regan, Chair, Providence Historic District Commission

Jan Armstrong, Preservation Consultant

Michael Bell, Chair, Cranston Historic District Commission

Jeffrey Staats, AIA, AICP, Professor, Roger Williams University, School of Architecture

Rhode Island's fourteen Certified Local Governments (CLGs) are responsible for overseeing and regulating the historic districts within their respective communities. In addition CLG's create and monitor projects relevant to their role as stewards of these historic districts. Examine some of the successful and innovative projects resulting from the CLG grant program.

B2 THE MILITARY HERITAGE OF NARRAGANSETT BAY

Moderator: Richard Greenwood, Ph.D., Project Review Coordinator, RIHP&HC

Col Theodore L. Gatchel USMC (Ret), Professor of Operations, Naval War College

Anthony Nicolosi, Director, Naval War College Museum

Walter Schroder, Author & Military Historian

Newport and Narragansett Bay have played a critical role in America's strategic defenses from the nation's birth up to the present. Learn about the history of coastal fortifications, the emergence of the modern Navy, and the ongoing efforts to preserve Rhode Island's outstanding legacy of military sites and structures.

B3 THREATENED BUILDINGS: STRATEGIES FOR RESCUE

Moderator: Arnold Robinson, Executive Director, Providence Preservation Society

Roberta Mudge Humble, President, Westerly Armory Restoration Inc.

Representative, Stadium Theater Performing Arts Center

Frank Prosnitz, President, Greenwich Odeum

Examine issues involved and strategies used in efforts to save structures endangered through abandonment or neglect. The Greenwich Odeum, the Westerly Armory, and the Stadium Theater in Woonsocket are three of the buildings that will be showcased in this stimulating session.

B4 NEWPORT PRESERVED: LESSONS FROM THE PAST

Moderator: Karen Jessup, Associate Professor, Roger Williams University, Historic Preservation Program

Robert P. Foley, Preservation Coordinator, Newport Restoration Foundation

Representative, Preservation Society of Newport County

Richard Sheffield, Former Officer of Operation Clapboard

Daniel Snyder, Ph.D., Director, Newport Historical Society

The Newport Historical Society, Newport Restoration Foundation, and the Preservation Society of Newport County are the larger organizations involved in long-term preservation efforts in Newport. Newport's preservation movement also includes individual homeowners and smaller grassroots organizations such as the former Operation Clapboard. Learn how all these efforts reflect the history of the preservation movement in America.

B5 LEARNING ABOUT NEIGHBORHOOD PRESERVATION: KEY ELEMENTS

Moderator: Clark Schoettle, Executive Director, Providence Preservation Society Revolving Fund

Joseph Garlick, Executive Director, Woonsocket Neighborhood Development Corp.

Kari Lang, Executive Director, West Broadway Neighborhood Association

Preserving a neighborhood is more than just saving or restoring single buildings. Learn from "players" who are directly involved in the process about key elements and strategies they are utilizing to help preserve and revitalize their neighborhoods.

B6 LIVING & WORKING WITH HERITAGE TOURISM

Moderator: Albert T. Klyberg, Executive Director, Rhode Island Historical Society and Heritage Harbor Museum

Stephen Bond, Director of London Tower Environ Scheme, TFT Cultural Heritage

David S. Gordon, Mayor of Newport

Keith Stokes, Executive Director, Newport County Chamber of Commerce

Heritage tourism is a billion dollar industry in Rhode Island and offers many potential benefits to historic communities, if careful planning is done in advance. This discussion will explore how heritage tourism can be cultivated while maintaining "livable" communities that have benefits for both visitor and local resident.

B7 COMMON BURYING GROUND: WALKING TOUR

Ronald Onorato, Honors Professor of Art, University of Rhode Island

John Sterling, Gravestone Historian

One of America's most significant early cemeteries, the Common Burying Ground has recently been inventoried and a preservation plan prepared. Join Ron Onorato and John Sterling for this fascinating tour that will explore this historic resource.

B8 MARITIME TOUR (All Afternoon 1:30 - 5:00)

Limited to 40 participants, \$20 nonrefundable fee, rain or shine

Start with a tour of the International Yacht Restoration School (IYRS) located at the old Newport Electric Company. Then board the 12-gun sloop *Providence* for a seaside tour of Newport Harbor and learn the history behind this replica of one of the first ships of the Continental Navy.

B9 PRESERVING AQUIDNECK ISLAND'S OPEN SPACES: BUS TOUR (All Afternoon 1:30 - 5:00)

Sheila Brush, Project Coordinator, Grow Smart Rhode Island

Peter Merriitt, President, Aquidneck Island Land Trust

Cortlandt & Nancy Wilson, Owners, and Nancy Parker-Wilson, Operations Manager, Greenvale Farm & Vineyards

The Aquidneck Island Land Trust, private landowners, and local governments have forged a partnership to preserve the farmlands and open spaces that are an integral part of the Island's cultural landscape. Tour the irreplaceable resources that are being linked to create the Sakonnet Greenway and learn about successful strategies from conservation leaders. Includes a visit to Greenvale Farm's historic buildings and new vineyards.

Second Afternoon Sessions 3:30-5:00 p.m.

C1 EXPANDING GRACEFULLY: MEETING TOMORROW'S NEEDS

Moderator: Daniel Snyder, Ph.D., Executive Director, Newport Historical Society
Lucinda Brockway, Principal, Past Designs
Christine H. Callahan, Executive Director, Newport Art Museum
Cheryl Helms, Library Director, Redwood Library & Athenaeum
How do you expand gracefully, when your organization has outgrown the historic structure it occupies? Discuss expansion plans that balance the modern needs of an organization, the historic structure they own, and the surrounding community.

C2 ISSUES IN AUTHENTICITY 2: RESTORATION ANALYSIS, TECHNIQUES, AND MATERIALS

Moderator: Roberta Randall, Sr. Historical Architect, RIHP&HC
Philip Marshall, Faculty, Roger Williams University, Historic Preservation Program
Charles Jeffers Moore, Chief Conservator, Preservation Society of Newport County
R. Christopher Noonan, Real Estate & Preservation Specialist, Building Conservation Branch of NPS
Once research on a historic site is complete, how do you proceed? The "bricks and mortar" issues behind material restoration of a structure will be discussed. Learn how to preserve authenticity through appropriate analysis, techniques, and materials for historic restoration.

C3 ADAPTIVE REUSE: NEW LIFE FOR OLD BUILDINGS

Moderator: Virginia Hesse, Principal Historical Architect, RIHP&HC
Michael Abbott, AIA, Principal, Newport Collaborative Architects
John Grosvenor, AIA, Principal, Newport Collaborative Architects
Kent Millard, Assistant Director, Providence Preservation Society
Stanley Weiss, President, Stanley Weiss Associates
William F. Wilson, AIA, President, William Wilson Associated Architects
When the original use for a building becomes obsolete what can you do with it to save it? This session will showcase four buildings that have been adapted to new uses; the Fletcher Building and 15 Cedar Street in Providence, Vanderbilt Hall in Newport, and the Greenvale Farm Winery in Middletown.

C4 FIGHTING BACK WITH THE MAIN STREET PROGRAM

Moderator: Wendy Nicholas, Director, Northeast Regional Office, National Trust for Historic Preservation
Martha-Marie Grogan, Coordinator, Broadway Task Force
Frederick Stachura, Projects Manager, Providence Preservation Society
Economic revitalization through historic preservation is the basic premise behind the exciting National Trust for Historic Preservation's Main Street Program. This session will present an overview of the Trust's program, Newport's Broadway program, and explore design issues relevant throughout Rhode Island.

C5 DISASTER MANAGEMENT: PREPARING FOR A CRISIS

Moderator: Melissa Mulrooney, Museum Director, International Tennis Hall of Fame
Kenneth Bourque, General Adjustor, Chubb Group of Insurance Companies
Leslie McDonough, Librarian, North Scituate Library
Representative, Newport Fire Department
Victoria Sanstead, Disaster Manager, NPS National Historic Landmarks Program
1998's fire at the International Tennis Hall of Fame and vandalism at the Scituate Library have highlighted the critical need for organizations to be prepared for a response to disaster. Learn what proactive and reactive measures you can take to help safeguard your historic structure and collection from unexpected crises.

C6 HERITAGE EDUCATION: CREATING EFFECTIVE PROGRAMS

Moderator: Claire Teixeira, Coordinator of Education Programs, Providence Preservation Society
Kirby Akers, Co-coordinator Gifted & Talented Program, Tiverton Middle School
Sue Andrews, Chief Ranger, Blackstone River Valley Heritage Corridor Commission, National Park Service
Stanley Grossman, President, & Rita Woods, Educational Chair, Middletown Preservation Society
Janet Zwolinski, Executive Director, Preservation Society of Pawtucket
Heritage education programs are a vital extension of our preservation and historical societies. Panelists will present heritage education programs their organizations have created and share their expertise about the "nuts and bolts" of a successful program.

C7 FORT ADAMS: WALKING TOUR (3:30 - 5:30)

Col Theodore L. Gatchel USMC (Ret), Professor of Operations, Naval War College
Fort Adams, built between 1824 and 1857, guards the strategic East Passage into Narragansett Bay and Newport Harbor. Learn about the history and restoration plans for this massive fort - home to the U.S. Naval Academy during the Civil War, center of the Army's coastal defense network in WW II, and acquired by the State of Rhode Island in 1964.

SHARE YOUR ORGANIZATION'S WORK

Table space will be available so that nonprofit organizations may share printed materials and announcements of upcoming events. Leftover materials must be removed by 3:00 p.m. as unclaimed materials will be discarded. Please call 222-4142 to reserve space and for further details.

The Naval War College Museum on the NWC Campus will be open for self-guided tours from 11:00 a.m. to 4:00 p.m.