

The Annual Statewide
Historic Preservation Conference

PRESERVATION BEGINS AT HOME: MAINTAINING COMMUNITY CHARACTER

Saturday, April 18, 1998

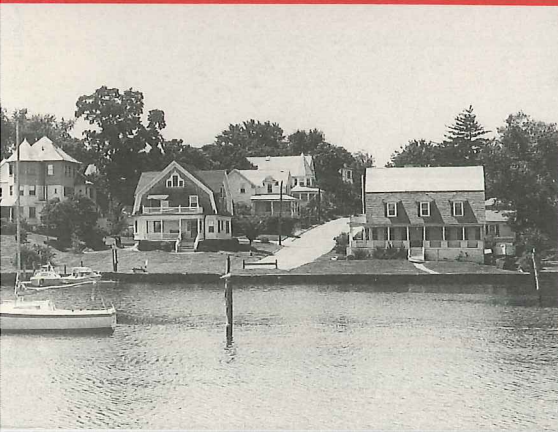
Roger Williams University, Bristol, Rhode Island

Sponsors

Rhode Island Historical Preservation &
Heritage Commission
Town of Bristol
Bristol Historic District Commission
Bristol Historical & Preservation Society
Dunn Foundation
Heritage Trust of Rhode Island
League of Rhode Island Historical Societies
National Trust for Historic Preservation
Roger Williams University School of
Architecture, Historic Preservation Program

Who Should Attend

Preservationists
Historic District Commissioners
Historical Society Volunteers
Homeowners and other Historic
Property Owners
Architects and Landscape Architects
Land Trust Members
Community Planners and Planning Boards
Concerned Citizens
Public Officials
Educators and Students



PRESERVATION BEGINS AT HOME

Throughout our state, in historic cities, small towns, and rural villages, Rhode Islanders are working to safeguard the community character which we all value so highly. If you are one of the many people who is committed to preserving Rhode Island's unique sense of place, register to attend the 1998 Statewide Historic Preservation Conference.

The conference will give you an opportunity to learn about strategies which have worked effectively in Rhode Island communities and in other states, to develop the knowledge you need about preservation issues, and to network with volunteers and professional preservationists from around the state.

CONFERENCE AGENDA

8:15-9:00 a.m.	REGISTRATION <i>Paolino Recreation Center</i>	12:30-1:30 p.m.	LUNCH AND EXHIBITS <i>Paolino Recreation Center</i>
9:00-10:40 a.m.	WELCOMING REMARKS KEYNOTE ADDRESS: Save Our Land Save Our Towns Thomas Hylton 1998 STATE HISTORIC PRESERVATION AWARDS	1:30-3:00 p.m.	FIRST AFTERNOON SESSIONS <i>(See descriptions on following pages.)</i>
10:40-11:00 a.m.	COFFEE BREAK/EXHIBITS	3:00-3:30 p.m.	BREAK
11:00-12:30 p.m.	MORNING SESSIONS <i>(See descriptions on following pages.)</i>	3:30-5:00 p.m.	SECOND AFTERNOON SESSIONS <i>(See descriptions on following pages.)</i>
		5:00-6:00 p.m.	CLOSING RECEPTION <i>School of Architecture</i>

KEYNOTE SPEAKER THOMAS HYLTON, a Pulitzer-Prize winning newspaper columnist, is the author of *Save Our Lands Save Our Towns*. Written in partnership with Preservation Pennsylvania, Mr. Hylton's book makes an eloquent plea for the protection of traditional communities in his native Pennsylvania -- a message which is very applicable to Rhode Island. Since the book's publication in 1995, Mr. Hylton has spoken throughout Pennsylvania and in many other states, including an address at the National Trust for Historic Preservation's National Conference. In 1997, he received the Trust's National Preservation Honor Award.

Handsomely illustrated with color photographs, Mr. Hylton's book is one of the important publications on how to save cities, towns and countryside. A limited number of autographed copies are available for sale through the conference and may be ordered with your registration. Income from the book sales will help cover conference expenses.

**A1 HELP FOR HISTORIC-HOME OWNERS 1
RESTORING OUR HISTORIC HOUSE**

*Roberta Randall, Preservation Architect, RIHP&HC
Warren W. Lanpher, Warren W. Lanpher Restoration*
When Roberta Randall and her husband bought their ca. 1819 post-and-beam house in North Smithfield, it featured all its original architectural details and materials -- plus three feet of water in the basement, a collapsed roof and back wall, and no plumbing, heat or electricity. Their restoration project, carefully documented with slides, is an inspiring preservation success story and provides a wealth of nuts-and-bolts restoration and financing information.

A2 MARKETING WHITE ELEPHANTS

*Moderator: Sally Spadaro, Governor's Policy Office
Arnold Robinson, Executive Director, Providence
Preservation Society
Kathy Warzecha, Planning Director, Norwich, CT*
Does your community have a "white elephant" -- some large endangered property, such as an armory, theater, or hotel? Attend this session to learn how local governments and preservation organizations have successfully used design charettes and creative marketing to find new owners for big old buildings.

**A3 PRESERVATION GOES HIGH TECH -- A USER-
FRIENDLY INTRO FOR COMPUTER NOVICES**

*Susan McMullen, Information Resources Librarian, Roger
Williams University*
Join us in the university's computer lab to learn how preservation and history buffs, HDCs, and historic-site managers are using computers and the Internet for research, community education, data management, and tourism marketing. If you've always wanted to try "surfing the Web" here's a chance to get your feet wet. Space limited.

A4 GROW SMART RHODE ISLAND

*Thomas Hylton, Author, Save Our Land Save Our Towns
Representatives, Grow Smart Rhode Island Technical
Committee*
Last year's Kingston conference led to the formation of Grow Smart Rhode Island, a statewide coalition of organizations and individuals working to address the issue of sprawl. Join keynote speaker Thomas Hylton and representatives from the Grow Smart Rhode Island Technical Committee to talk about smart growth organizations in other states and to give your input to Rhode Island's smart growth efforts.

A5 UP AGAINST THE WAL(GREEN'S)

*Moderator: Vincent Millard, Co-Chair; Develop Warren
Wisely
Kathryn Barry, Develop Warren Wisely
Davison Bolster, Warren Planning Board and Co-Author;
Warren Comprehensive Plan
Bob Moore, Vice President, Warren Preservation Society
and Member, Develop Warren Wisely Steering Committee*
Last fall, Warren citizens mounted an all-out effort to oppose Walgreen's plans to develop a "super-store" on Main Street. How did Warren succeed where so many towns have failed? Get the details of how the community used a range of approaches -- from petition drives to economic research to public relations to new town ordinances -- to protect the character of Main Street.

**A6 THE KAISER MILL NEIGHBORHOOD
YESTERDAY AND TODAY: WALKING TOUR**

*Kevin Jordan, Faculty, Roger Williams University Historic
Preservation Program
George Sardinha, Vice President, Mosaico Community
Development Corp.
Representative, East Bay Community Development Corp.*
Bristol's Kaiser Mill neighborhood housed African-Americans in the 18th and early 19th centuries, followed by an ethnically diverse millworker population in the late 19th and early 20th century. Recent community-led efforts have rehabbed the mill complex for elderly housing and other uses and spurred neighborhood revitalization. Tour the neighborhood and the mill project to hear about the area's past and about hopes for its future.

**A7 TWO CENTURIES OF GRAND DESIGN:
WALKING TOUR OF DOWNTOWN BRISTOL**

*Robert Owen Jones, Architectural Historian, RIHP&HC
Lombard John Pozzi, Architect*
Bristol's highly distinctive urban and architectural design, characterized by grand scale and lavish architectural detailing, make it unique amongst Rhode Island's traditional town centers. Sample the village's richness on a tour highlighting Linden Place, the Bristol State House, and other works by regionally and nationally significant architects.

SHARE YOUR ORGANIZATION'S WORK

*Table space will be available so that non-profit organiza-
tions may share printed materials and announcements of
upcoming events.*

B1 HELP FOR HISTORIC-HOME OWNERS 2 ANALYZING THE CONDITION OF YOUR HOUSE

Martha L. Werenfels, AIA, Principal, Durkee & Brown Architects

Historic-home owners and house-museum stewards will benefit from this slide-illustrated lecture about how to analyze the condition of your house and prioritize work that needs to be done. The session will include a question-and-answer period and handouts about state historic tax credits and other financial assistance.

B2 APPRECIATING AND PROTECTING TRADITIONAL NEIGHBORHOOD CHARACTER

*Pamela Kennedy, Deputy Director, RIHP&HC, Moderator
Derwent J. Riding, Principal Planner, Municipal Affairs,
Community Planning*

Lorraine Joubert, URI Cooperative Extension Service
What are the visual elements which contribute to the appeal of traditional neighborhoods? What can we do as individuals, neighborhoods and towns to protect their special character? Strategies will cover tree funds and stewardship programs, streetscape improvements, historic district design guidelines, and local zoning ordinances.

B3 GRANTS FOR PRESERVATION AND HISTORICAL SOCIETIES

*Wendy Nicholas, Director, Northeast Regional Office,
National Trust for Historic Preservation*

If your local organization needs to raise funds for a specific project, here is your opportunity to find out about funds available from the National Trust for Historic Preservation and other sources. Bring specific questions about your project to this session.

B4 COMMUNITY RESEARCH RESOURCES AT ROGER WILLIAMS UNIVERSITY

*Betsy Peck Learned, Architecture Librarian, Roger Williams
University School of Architecture Library*

From Sanborn Insurance Maps to the HABS/HAER reports to technical information on restoration problems to works on architects and architectural styles, the School of Architecture Library boasts the largest historic preservation collection in Rhode Island. It's an invaluable source of information for architects, property owners and researchers, and it's open free of charge to the public as a community service. Discover the resources available and how to use them.

B5 OLD BUILDINGS/NEW NEIGHBORS: DESIGNS FOR SOUTHSIDE/BROAD STREET

Moderator: Ricardo Patino

Martin Ezeama, EA Design

Fred Holman, Roger Williams Park

*Miguel Luna, Member, Southside/Broad Street
Community Council and Providence HDC*

Barbara Walzer, Program Manager, Southside/Broad Street

Providence's Broad Street -- a community revitalization project based on the National Trust's Main Street model -- poses a critical question for designers and preservationists. How can a neighborhood evolve visually to reflect the cultures of its current residents and merchants without losing its historical associations? Join a free-wheeling exploration of an important issue.

B6 MOBILIZING TO SAVE MOUNT HOPE FARM: A CASE STUDY IN COMMUNITY PRESERVATION

*Moderator: James Farley, Chairman, Bristol Planning Board
and Mount Hope Farm Preservation Committee*

Terrence Breiding, Trust Officer, Fleet Bank

Rick Greenwood, Project Review Coordinator, RIHP&HC

Andrew Teitz, Bristol Assistant Town Solicitor

Diane Williamson, Bristol Assistant Town Planner

Mount Hope Farm is widely recognized as an important historical, architectural, and archaeological resource -- and as a prime piece of property. When the estate went on the market, it seemed destined for development. Take back to your community the lessons Bristol is learning as it rallies to protect Mount Hope Farm for the future.

B7 "PRIVATE ESTATE -- OPEN TO THE PUBLIC" POPPASQUASH FARMS BUS TOUR

Elizabeth S. Warren, Architectural Historian, RIHP&HC

Explore this breathtaking area's evolution from the laying out of 17th century saltwater farms to Colonel Colt's amassing of a gentleman's estate at the turn of the century to its conservation today as Colt State Park. Visit Coggeshall Farm and discover a cluster of fine 18th- and 19th-century homes overlooking Bristol Harbor.

B8 WONDERFUL WARREN: WALKING TOUR

Gary Budlong, President, Warren Preservation Society.

Warren's historic buildings document three centuries of the seaport's colorful history. Explore the village center from waterfront to main Street and step inside several historic buildings not usually open for tour.

C1 HELP FOR HISTORIC-HOME OWNERS 3 WORKING WITH CONTRACTORS

Moderator: Virginia Hesse, Principal Historical Architect, RIHP&HC

Wayne Trissler, Rehab Specialist, Providence Preservation Society Revolving Fund

Bob Major, Restoration Contractor, The Preservation Cooperative, Ltd.

Whether you're thinking about painting or re-roofing your house or are starting to plan a more complicated restoration project, you'll want to attend this session to learn how to "spec" the job and go out for bid, how to find good contractors and architects, and how to ensure that you'll get the job you expect for the price you expect to pay.

C2 THERE'S NO PLACE LIKE HOME: THE ARCHITECTURE OF 20TH CENTURY HOUSES

Wm McKenzie Woodward, Architectural Historian, RIHP&HC

Many Rhode Islanders don't think of 20th century houses as historic, but, in fact, several 20th century neighborhoods have already been listed on the National Register of Historic Places. Learn how vernacular interpretations of revival styles reflect significant national and international architectural trends and develop a new appreciation for the design, ornamentation and materials of your own 20th century house.

C3 PROTECTING STONE WALLS AND CEMETERIES

Leona Kelley, State Senator; Moderator

Stefan Bach, Wickford Stonecarver

Stanley Grossman, President, Middletown Historical Society

Steven Lepley, Co-Chair, Middletown Historical Society Stone Wall Committee

Historic cemeteries and early stone walls document local history and contribute significantly to a community's visual character. Hear how local regulations and incentives and creative public awareness efforts can help to protect these endangered resources.

C4 IMPROVING COMMUNICATION AMONGST HDCs

David S. R. Andreozzi, Chair, Bristol Historic District Commission

Michael Bell, Chair, Cranston Historic District Commission

A must for all HDC members attending the conference, this session will focus on how to create and maintain effective lines of communication amongst Rhode Island HDCs.

C5 GREENBELTS: AN HISTORICAL OVERVIEW

Ivan Hall, Ph.D., Scholar-In-Residence, Roger Williams University Historic Preservation Program

In his slide-illustrated talk, Dr. Hall, who has lectured widely on preservation and planning issues in England and Europe, will explore the origins of the green belt concept as a response to urban growth, landscape conservation issues, and the need to develop effective transportation systems.

C6 CAREER PATHS FOR PRESERVATIONISTS

Moderator: Michael Swanson, Ph.D., Professor of Historic Preservation, Roger Williams University Alumni, Roger Williams University Historic Preservation Program

Hear how alumni working in southern New England are putting their training to work to advance preservation efforts in the region, and join in the discussion of what the employment future holds for historic preservation majors.

C7 HOPE STREET HOSPITALITY: BUS TOUR OF BRISTOL B&Bs

Susan Adams, Bradford-Diamond-Norris House Bed & Breakfast

Wendy Anderson, Joseph Reynolds House Bed & Breakfast

Debra Krohn, Rockwell House Inn Bed & Breakfast

Jean Tischer, Parker-Borden House Bed & Breakfast

Some of Bristol's fine 17th- and 18th-century homes are enjoying a second lease on life as bed & breakfasts. Stop at several B&Bs to see first-hand how architecturally significant residences can be adapted for B&B use and to talk with the owners about what it's like to be an innkeeper.

C8 BUS TOUR TO THE HERRESHOFF MARINE MUSEUM AND AMERICA'S CUP HALL OF FAME

Christopher S. Trobridge, Museum Curator

Travel back to the "Golden Age of Yachting" with a visit to the Museum, located at the site of the world-famous Herreshoff Manufacturing Company. View classic sailing and power yachts built by the Herreshoffs between 1859 and 1945, together with photographs and yachting memorabilia.