

Sponsoring Organizations:

Rhode Island Historical Preservation & Heritage Commission

City of Pawtucket and the Pawtucket Historic District Commission

Preservation Society of Pawtucket

Heritage Trust of Rhode Island

Roger Williams University Center for Historic Preservation

League of Rhode Island Historical Societies

American Institute of Architects/
Rhode Island Chapter

Blackstone River Valley National Heritage Corridor Commission

Blackstone Valley Tourism Council

Rhode Island Foundation

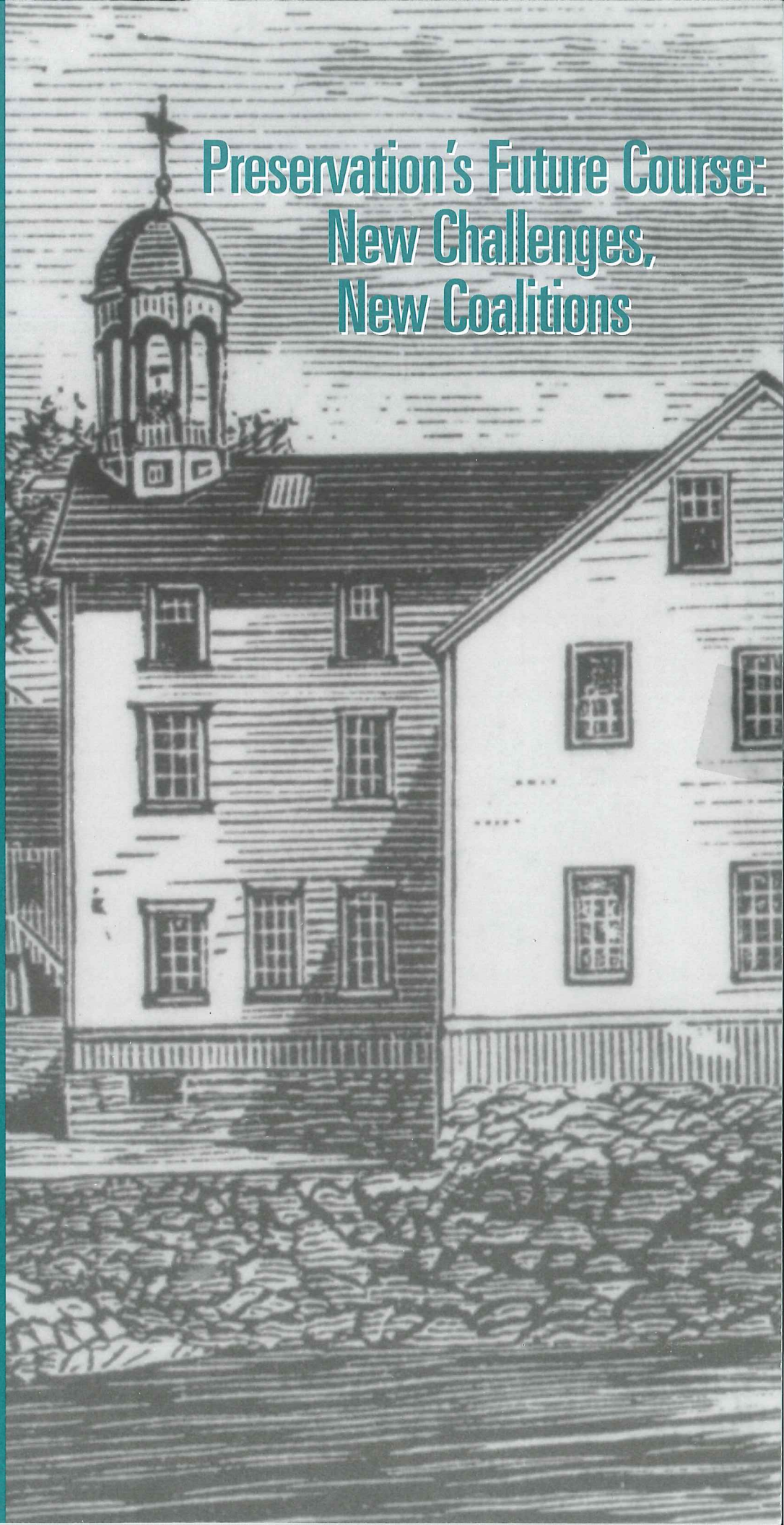
Scenic Rhode Island Foundation

The 11th Annual Rhode Island Historic Preservation Conference Saturday, April 20, 1996 Pawtucket, RI

Who Should Attend:

Preservationists, Historic District Commissioners, Architects, Landscape Architects, Community Planners, Preservation/Historical Society Board Members and Volunteers, Homeowners and Other Historic-Property Owners, Developers, Public Officials, Heritage Educators.

Preservation's Future Course: New Challenges, New Coalitions



PRESERVATION'S FUTURE COURSE Saturday, April 20, 1996

If you are one of the many people who care about the preservation of Rhode Island's historic landmarks, neighborhoods and open spaces . . .

The 1996 Statewide Historic Preservation Conference will provide you with a unique opportunity to come together with a wide range of Rhode Islanders who share your concerns. Participate in thought-provoking panel discussions, workshops and field trips dealing with the challenges that lie ahead for historic preservation in Rhode Island. Consider how these challenges can also be viewed as opportunities to expand the audience for historic preservation and to build new coalitions with such groups as land conservation interests, community housing and revitalization organizations, and tourism proponents.

If you have always wanted to explore the Blackstone River Valley but have never had a chance . . .

The conference will offer a variety of tours designed to showcase the region's diverse historic resources, from stone-enders to mansions and from farmlands to mills. Preservation leaders in Pawtucket and other Blackstone Valley communities look forward to welcoming you.

AGENDA

8:15-9:00 AM REGISTRATION

William E. Tolman Senior High
School Auditorium
Exchange Street, Pawtucket

9:00-10:45 AM WELCOMING REMARKS

Mayor Robert E. Metivier (invited)
Governor Lincoln Almond (invited)

KEYNOTE ADDRESS:

"Diversifying Our Vision"
Dwight Young
Senior Communications Associate
National Trust for Historic Preservation

PRESENTATION OF THE 1996 STATE HISTORIC PRESERVATION AWARDS

10:45-11:00 AM COFFEE BREAK

11:00-12:30 PM LATE MORNING SESSIONS

See schedule and descriptions on following pages.

12:30-1:30 PM LUNCH, Tolman High School Cafeteria
(If you register for the lunch-hour boat tour and order lunch, we will provide a box lunch for you.)

1:30-3:00 PM FIRST AFTERNOON SESSIONS

See schedule and descriptions on following pages.

3:30-5:00 PM SECOND AFTERNOON SESSIONS

See schedule and descriptions on following pages.

5:00-6:00 PM CLOSING RECEPTION & 75th Birthday
Party for the Old Slater Mill Association
Slater Mill Historic Site

The 1996 Statewide Historic Preservation Conference will serve as the April meeting for AIA/RI.

PROFESSIONAL EDUCATION CREDITS FOR AIA/RI MEMBERS AND RI EDUCATORS:

AIA/RI members can receive Level II professional education credits for attending the conference. Ask for a registration confirmation when you arrive at the conference on Saturday morning.

Rhode Island educators who attend the entire conference can receive 10 Contact Hours. Ask for a form when you arrive at the conference on Saturday morning. The form will be signed at the closing reception.

ABOUT THE KEYNOTE SPEAKER:

Dwight Young is widely recognized as the author of the column "The Back Page" in the National Trust's magazine *Historic Preservation*.

Young, who holds a Master's Degree in architectural history from the University of Virginia, joined the National Trust in 1977 to open the Southern Regional Office in Charleston, South Carolina. After six years directing the Trust's work in ten southern states, he became the organization's Senior Communications Associate in 1992. In speeches, magazine articles and opinion pieces, he demonstrates a rare talent for clearly and eloquently conveying the importance of community preservation.

LATE MORNING SESSIONS 11:00AM - 12:30PM

A1 DEVELOPING HERITAGE TOURISM IN RHODE ISLAND

Albert Klyberg, Director, RI Historical Society, Moderator
David DePetrillo, Director, Tourism Division, R.I. Economic Development Corporation

Robert Billington, President, Blackstone Valley Tourism Council

Gail Mahonty, Executive Director, Slater Mill Historic Site

With two new visitor centers in the works in northern R.I. and state and regional promotion efforts increasing, R.I.'s heritage tourism is a growth industry. Learn how different agencies and historic places — including your society's historic site — fit into the big picture. A must for every group with an historic site.

A2 CODE AND CONTAMINATION ABATEMENT ISSUES INFLUENCING INDUSTRIAL BUILDING REUSE

Arnold Robinson, Executive Director, Providence Preservation Society, Moderator

Daniel DeDentro, Deputy State Building Commissioner

Irving Owens, State Fire Marshall

Josh Fenton, Assistant to The Director, DEM

Terry Gray, Chief, Site Remediation Division, DEM

Architects, building owners and developers and city/town planners are invited to continue the dialogue initiated at the 1995 conference. Get the latest info from state officials, share your ideas about problems and solutions with the panel, and hear about PPS's exploration of code revisions to address historic-property issues.

A3 TEACHING CHILDREN TO LOOK AT THEIR COMMUNITY

David Leach, Executive Director, Scenic R.I. Foundation, Moderator

William Brew, Ecologist, Blackstone Valley Tourism Council

Sue Andrews, National Park Service Ranger, Blackstone River Valley National Heritage Corridor Commission

Claire Teixeira, Education Coordinator, Providence Preservation Society

Examine innovative school programs which foster youngsters' appreciation for the historic built environment and the natural environment. Take back field trip ideas and suggestions for program designs which appeal to children of different backgrounds and ages.

A4 EXPANDING YOUR ORGANIZATION'S MEMBERSHIP

Doris Stearn Donovan, Consultant on Organizational Matters

A hands-on workshop for Board members from small, volunteer-run organizations. Learn how to identify new and diverse participants who share common interests and concerns, reach out to those potential members, and provide satisfying opportunities for involvement.

A5 BRINGING ARCHAEOLOGY TO THE PUBLIC

Charlotte Taylor, Archaeologist, RIHP&HC, Moderator
Patrick Malone, Ph.D., Urban Studies Program and Department of American Civilization, Brown University
Paul Robinson, Ph.D., Principal Archaeologist, RIHP&HC
Myron Stachiw, Chief Historian and Staff Archaeologist, Society for the Preservation of New England Antiquities

Archaeological sites throughout R.I. offer untapped opportunities for interpretation through trails and signage. View slide presentations of sites where effective interpretation is already in place and of sites where such interpretation could be introduced.

A6 HOMEOWNERS' WORKSHOP I: WHERE DO I START?

Paul Strattner, Historic Preservation Partnership Ltd.

Whether your home is a 1790s mansion, an 1870s farmhouse or a 1920s bungalow, you need to assess the building's condition before you can prioritize your restoration/maintenance work. This slide-illustrated talk by a restoration contractor will tell you what to look for, how to prioritize, and how to decide what to tackle yourself and what to leave to a professional.

A7 WALKING TOUR OF THE SOUTH CENTRAL FALLS HISTORIC DISTRICT

Mariana Bauman, President, Historic Central Falls, Inc.

Beth Perry, Historic Central Falls, Inc. and Central Falls HDC

Discuss Central Falls revitalization and preservation efforts with community preservation leaders during a walking tour of a National Register District encompassing Greek Revival, Italianate, Queen Anne and Colonial Revival residential architecture.



Blackstone River Explorer

Blackstone Valley Tourism Council

A8 EXPLORING THE BLACKSTONE RIVER

Kevin Klyberg, Historian, Blackstone Valley Tourism Council

Board the riverboat Explorer at Slater Mill Pond for a 45-minute cruise. View the Blackstone River and mill buildings along its banks from a new perspective, and hear how the Tourism Council uses the boat in its tours and educational programs. (Tour also offered during the lunch hour and first half-afternoon session.)

AFTERNOON SESSIONS

During the afternoon, you can elect to attend one full-afternoon session from 1:30-5:00 PM OR to attend two half-afternoon sessions, from 1:30-3:00 PM and from 3:30-5:00 PM.

FULL AFTERNOON SESSIONS

Both full-afternoon sessions are field trips which will leave Pawtucket at 1:30 and return at 5:00 PM.

F1 HOW GREEN IS THE VALLEY, HOW GREEN IS OUR STATE: ALL-AFTERNOON FIELD WORKSHOP

Edward Sanderson, Executive Director, RIHP & HC, Moderator

James Pepper, Executive Director, Blackstone River Valley National Heritage Corridor Commission (BRVNHCC)

Sara Bradford, Principal Landscape Architect, Bradford Associates, Consultant to R.I. Scenic Roadways Board

Virginia Leslie, Greenways Coordinator, DEM and BRVNHCC

Donald Sharp, President, R.I. Chapter, American Society of Landscape Architects

Judy Benedict, The Nature Conservancy

Join planners, landscape architects, and community land conservation advocates for a field study of R.I. efforts to create greenways, conserve open space and protect scenic roadways. Tour several sites, including Kelly Farm, the Blackstone River Tow Path, and the Great Road Historic District. Receive progress reports from agencies and groups addressing open space issues and exchange ideas about what needs to be done. (Please wear sturdy walking shoes.)

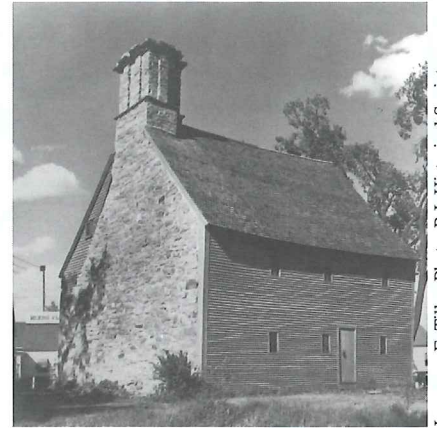
F2 LANDMARKS OF THE VALLEY: ALL-AFTERNOON TOUR

Robert Billington, President, Blackstone Valley Tourism Council

Wm McKenzie Woodward, Architectural Historian, RIHP & HC

Enjoy a narrated coach tour highlighting some of the Valley's most significant historical resources. Afternoon

includes stops at the Eleazer Arnold House, a rare 17th-century stone-ender; the John Daggett House (1685), Pawtucket's oldest surviving residence; and the 1713 Smith-Appleby House, one of R.I.'s finest early rural houses.



Eleazer Arnold House, c. 1687

Laurence E. Tilley Photo, R.I. Historical Society

FIRST HALF-AFTERNOON SESSIONS 1:30PM - 3:00PM

B1 MILL/INDUSTRIAL BUILDING REUSE: THREE CASE STUDIES

Virginia Hesse, Principal Historical Architect, RIHP & HC, Moderator

Duarte Silva, Developer, Parkin Yarn Complex

John Grosvenor, AIA, Newport Collaborative Architects

Morris Nathanson, ASID, Morris Nathanson Design Inc.

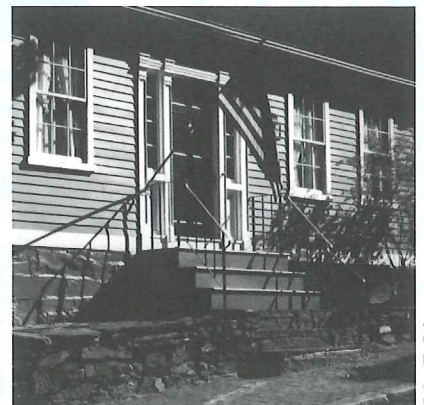
Robert Harding, Ph.D., Chief Financial Officer, Polytop Corp.

Meet in an historic mill building to hear architects and developers present three projects which illustrate design issues, financing and other considerations critical to successful mill reuse. Particularly recommended for architects, developers, community planners and others concerned about redevelopment of our industrial heritage.

B2 DEVELOPING AND MAINTAINING LOCAL HISTORY COLLECTIONS

Betty Johnson and Jim Wheaton, Co-Directors, Spaulding House Research Library

The Research Library helps save Pawtucket's history by preserving documents, photographs and maps. Take home practical, cost-efficient suggestions for your own community's local history collection. Workshop will be held at the Research Library in the Joseph Spaulding House.



Joseph Spaulding House

John E. Johnson

FIRST HALF-AFTERNOON SESSIONS 1:30PM - 3:00PM *Continued...*

B3 HOMEOWNER WORKSHOP II: HOW DO I PAY FOR IT?

B. Clarkson Schoettle, Executive Director, PPS Revolving Fund, Moderator
Brenda Taylor, RI Housing & Mortgage Finance Corporation
Michael Dziok, Department of Housing & Urban Development
Roberta Randall, Historical Architect, RIHP&HC

Historic-home owners and potential owners will want to take this opportunity to learn about low-interest loan pools, mortgage insurance programs, state tax credits and other forms of assistance for purchasing and maintaining older homes. Local banks have also been invited to send representatives.

B4 ARCHAEOLOGICAL SITE TOUR: FIRST R.I. STATE PRISON, PROVIDENCE

James Garman and Paul Russo, Co-Principal Investigators, The Public Archaeology Lab, Inc.

PAL, Inc. and the Providence Place Group offer conference participants a unique opportunity to tour the archaeological investigation of the RI State Prison (1837-1877) and Roger Williams Foundry (1842-1894) in Providence — soon to be covered by Providence Place Mall. Bus transportation provided. This is a construction-site tour. Participants must wear sturdy walking shoes and will be required to sign a release.

B5 WALKING TOUR OF QUALITY HILL HISTORIC DISTRICT

Earlene Hines, President, Quality Hill Neighborhood Association
Jeff Bienkowski, Quality Hill Neighborhood Association
Karen Finley, Quality Hill Neighborhood Association
Robin Hargrave, Architect and Pawtucket HDC



Ellis Pearce House, 1871-72, Quality Hill H.D.

RIHP & HC

The finest late 19th and early 20th century residential neighborhood in Pawtucket, Quality Hill includes many well-preserved houses originally built by wealthy merchants and manufacturers. Tour the area and discuss current neighborhood issues with local residents.

B6 EXPLORING THE BLACKSTONE RIVER

See description A8 under Morning Sessions

SECOND HALF-AFTERNOON SESSIONS 3:30PM - 5:00PM

C1 A TALE OF TWO VILLAGES

Elizabeth Warren, Architectural Historian, RIHP & HC

Enjoy a lively slide presentation about two mill villages in the Pawtucket and Blackstone River Valleys. Illustrated with historic photographs, the talk will trace the architectural and social growth of Hope Village in Scituate and Lonsdale Village, located in Lincoln and Cumberland.

C2 MOCK HISTORIC DISTRICT COMMISSION MEETING

If you sit on an HDC or your community is considering historic district zoning, don't miss this opportunity to sharpen your understanding of proper procedure and develop your ability to communicate effectively with applicants.

C3 DIRECTOR'S TOUR OF SLATER MILL

Gail Mahonty, Executive Director, Slater Mill Historic Site

Gain a better understanding of this National Historic Landmark's significance as the Birthplace of the American Industrial Revolution and of how the dam, power canal and mill buildings operated. Hear about the restoration of the property and the challenges and opportunities facing the site today.

C4 "THE CITY OF SPIRES": COACH TOUR

Robert O. Jones, Architectural Historian, RIHP&HC

Pawtucket's many religious buildings reflect the area's ethnic diversity and offer fine examples of different architectural styles. Tour several magnificent interiors with a guide who has studied religious architecture throughout the state.

C5 TOUR OF THE JOSEPH SPAULDING HOUSE (1828)

Mrs. John E. Johnson (Betty), Homeowner

The Joseph Spaulding House's fine Federal details exhibit the skills of its original owner, a cabinet-maker. Enjoy a rare opportunity to tour the fully-restored house with the owner and discuss the research and preservation philosophy which guided the restoration work.

C6 UNDERSTANDING THE SECRETARY OF THE INTERIOR'S STANDARDS FOR REHABILITATION

Virginia Hesse, Principle Historical Architect, RIHP&HC
Roberta Randall, Historical Architect, RIHP&HC

This slide-illustrated talk will increase your understanding of the guidelines used to review rehab work for Federal and State tax credits and loans and for local historic district zoning. Particularly recommended for homeowners, other historic-property owners and architects.