

PRESERVATION STRATEGIES FOR LIVABLE COMMUNITIES

Saturday, April 9, 1994

CONFERENCE AGENDA

8:30-9:00 AM REGISTRATION, COFFEE, EXHIBITS *McAuley Hall, Salve Regina University*

9:00-10:45 AM OPENING SESSION *O'Hare Academic Center*

WELCOMING REMARKS

Edward F. Sanderson, Executive Director, RI Historical Preservation Commission
Tina C. Regan, President, RI Alliance of Historic District Commissions
David F. Roderick, Jr., Mayor, City of Newport
The Honorable Bruce Sundlun, Governor of Rhode Island (invited)

KEYNOTE SPEAKER: CHARLES B. ZUCKER, SENIOR DIRECTOR, COMMUNITY DESIGN AND DEVELOPMENT, THE AMERICAN INSTITUTE OF ARCHITECTS
As leader of the AIA's design assistance program, Charles Zucker is in the forefront of the national discussion about neighborhood livability and has travelled across the country, lending his design and planning expertise to communities large and small, urban and rural. He will share with us his insights about the common elements found in livable communities and illustrate the contribution which historic buildings and neighborhoods make to our sense of place.

1994 HISTORIC PRESERVATION AWARDS

10:45-11:10 AM COFFEE BREAK, EXHIBITS

At this time, the RI Alliance of Historic District Commissions will hold its Annual Business Meeting/Election of Officers. All Alliance members are invited to attend.

11:10-12:20 PM PRESERVATION AND COMMUNITY LIVABILITY: PANEL DISCUSSIONS

Attend one of seven panel discussions focusing on key issues for community livability and historic preservation in the 1990s. Gain new insights and share your own experiences and opinions during the give-and-take discussion. *See inside for descriptions.*

12:30- 1:30 PM LUNCHEON

Network with friends and colleagues over a delicious box luncheon.

1:30- 5:00 PM AFTERNOON WORKSHOPS/TOURS *See inside for schedule and descriptions.*

4:45- 6:00 PM CLOSING RECEPTION, *McAuley Hall*

This Conference was made possible by a grant from



**RHODE ISLAND
HISTORICAL PRESERVATION
COMMISSION**

The conference is funded by a Certified Local Government grant administered by the RI Historical Preservation Commission to the City of Newport. The RIHPC Certified Local Government program receives federal funds from the U.S. Department of the Interior, National Park Service. The contents and opinions contained herein do not necessarily reflect the views or policies of the Department of the Interior. Regulations of the Department of the Interior strictly prohibit unlawful discrimination in departmental federally assisted programs on the basis of race, color, national origin, age, or handicap. Any person who believes he or she has been discriminated against in any program, activity or facility operated by a recipient of federal assistance should write to: Director, Equal Opportunity Program, U.S. Department of the Interior, National Park Service, P.O. Box 37127, Washington, D.C. 20013-37127.

The conference sponsors thank Salve Regina University for hosting the 1994 Conference and the Center for Historic Preservation, Roger Williams University, for helping to underwrite publicity costs.

MORNING PANEL DISCUSSIONS

A1 Creating Better Communications Between HDCs and Institutions

Moderator: Thomas E. Deller, Deputy Director for Planning and Policy, City of Providence
Franco Beneduce, Providence HDC
Thomas P. Flanagan, Vice President for Administration, Salve Regina University
Brooke Roberts, Chair, Newport HDC
George H. Warren, AIA, Newport Hospital Building Committee

Schools, hospitals and other institutions enhance our quality of life. But the building plans of institutions located in local historic districts sometimes conflict with the standards of the historic district commissions. What does each side need to understand about the other's goals? How can conflicts be avoided or resolved?

A2 Developing Historic Properties for Affordable Housing

Moderator: B. Clarkson Schoettle, Providence Preservation Society Revolving Fund
Stephen P. Ostiguy, Executive Director, Church Community Housing Corporation
Alma Felix Greene, President, Women's Development Corporation

Rhode Island's older buildings are valuable resources as we seek to meet current needs for affordable and alternative housing. How can projects be funded? Can housing be rehabbed at an affordable cost while meeting Secretary of Interior Standards?

A3 Revitalizing Main Street

Moderator: B. Michael Rauh, Jr., President, Westerly-Pawcatuck Joint Development Task Force
Kathleen M. Crawley, Economic Development Planner, City of Woonsocket and Executive Director, Main Street 2000 Development Corporation
Margaret M. Fusaro, Downtown Manager, Westerly-Pawcatuck
Albert P. Valliere, Chairman, Main Street 2000 Development Corporation

Many cities and towns want to revitalize their historic commercial districts. What are the necessary elements for a successful revitalization plan? What role should preservation advocates play? What makes restoration of early commercial buildings financially feasible?

A4 Designing Livable Communities

Charles B. Zucker, Sr. Director, Community Design and Development, The American Institute of Architects
Kenneth Filarski, Chair, Design and Education Committee, AIA/RI

Across the state, communities are grappling with the issues of affordable housing, commercial revitalization and open space. What are the design questions which need to be considered? What assistance may be available from the AIA? Take this opportunity to talk further with our keynote speaker about your community's design challenges.

A5 Providing Open Spaces for Historic Areas

Moderator: Richard Greenwood, Project Review Coordinator, RIHPC
Wilfrid L. Gates, Jr., ASLA, President, Gates, Leighton & Associates, Inc.
Lalla Searle, Searle and Searle

Rhode Islanders place a high priority on open space. Can historic sites be used as recreational space? How can we introduce green space into historic areas where no green space originally existed? How do we research historic landscapes and adapt historic designs to current needs?

A6 Using Historic Buildings for Cultural Centers

Moderator: Lucie Searle, Project Manager, AS220
Anne W. Campbell, Manager, Chorus of Westerly
John Haley, Executive Director, Hamilton House

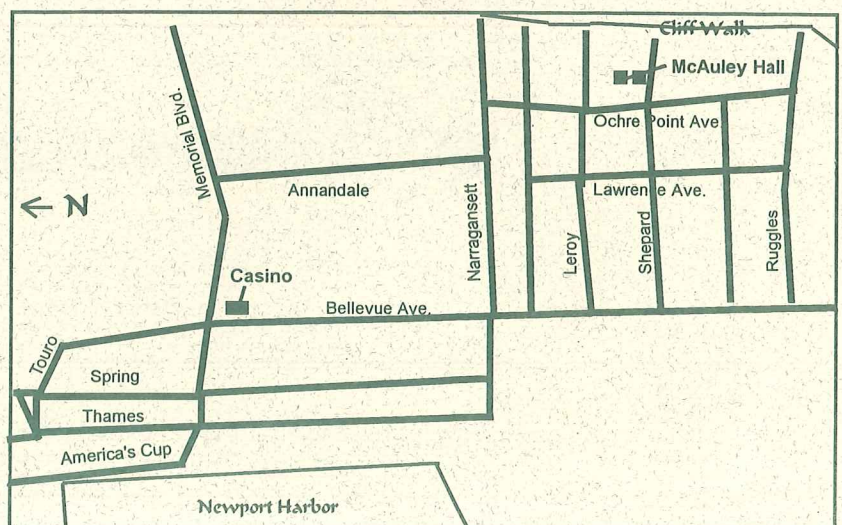
As artists search for exhibit and performance space and senior citizens and other groups search for meeting space, old buildings are standing vacant and deteriorating. When is it feasible to use these properties for cultural and community centers? What potential problems need to be considered? Is funding available?

A7 Mobilizing Neighborhood Resources

Moderator: John P. Canham, Newport Preservation Alliance
Arnold N. Robinson, Assistant Director, Providence Preservation Society
Christine E. Montanaro, President, The Point Association
Neighborhood and preservation groups frequently play critical roles in protecting and revitalizing historic areas. How can all-volunteer associations organize themselves to achieve their goals? How can they help each other?

To get to the Conference:

The conference will take place on the campus of Salve Regina University, with busses providing transportation to afternoon tour sites. To reach the Salve Regina campus, drive south on Bellevue Avenue, turn left on Shephard Avenue and go two blocks to Ochre Point Avenue. You are now in the heart of the Salve campus. McAuley Hall, the Conference Registration and Information site, is located on Ochre Point Avenue, between Shephard and Leroy. University parking lots and on-the-street parking are available.



AFTERNOON WORKSHOPS/TOURS

FIRST CONCURRENT SESSIONS, 1:30-3:00 PM

B1 Staff Support: A Workshop for HDCs

Moderator: Tina C. Regan, President, RI Alliance of HDCs
Michelle C. Christiansen, Newport HDC
Dory Skemp, Chair, Bristol HDC

Take home suggestions for making your HDC more efficient from Commissions who have organized themselves to function effectively with limited staff support. Talk with other HDCs about getting more staff support.

B2 Good Housekeeping: Minimizing Wear and Tear on Historic Properties Open to The Public

Trish Hanson, Tour Chair, Providence Preservation Society
Festival of Historic Houses

Albert Klyberg, Executive Director, RI Historical Society

Mark Zelonis, Executive Director, Heritage Trust of RI

Learn how careful planning and simple precautions can minimize wear and tear on buildings and grounds caused by visitors to house museums and private house tours.

B3 Bus Tour of Innovative Housing Rehabilitation Projects

Stephen P. Ostiguy, Executive Director, Church
Community Housing Corporation

Tour the interior of the Army Navy YMCA and other historic buildings successfully rehabbed as affordable housing.

B4 Walking Tour of The Hill Neighborhood*

Richard C. Crisson, Historical Architect, Nat'l Park Service

John B. Hattendorf, Board of Directors, Hill Association

The area encompassing Trinity Church and Queen Anne's Square was significantly altered during the 1970s. Discover what early architecture is original and what has been introduced, and learn how the neighborhood is dealing with current pressures.

B5 African-Americans in Newport

Richard C. Youngken, Planning Director, Newport
Collaborative

Eleanor L. Keys, Newport African-American Project
Community Advisory Group

Theresa M. Stokes, Newport African-American Project
Community Advisory Group

Hear how residents, the Black Heritage Society and the RIHPC identified buildings associated with Newport's African-American history. Their project can serve as a model for your community.

B6 The Architect's Dream: Building The Great Houses of Newport, 1875-1914

John R. Tschirch, Director of Education, Preservation
Society of Newport County

Heighten your appreciation of Newport's "summer cottage" architecture through a slide-illustrated lecture.

B7 Walking Tour of The Common Burial Ground*

James C. Garman, Newport Common Burial Ground
Advisory Commission

Join a guided tour of the Common Burial Ground's exceptional stone carving and learn about Newport's efforts to ensure the future of this important cemetery.

B8 Walking Tour of The Historic Salve Regina Campus

Thomas P. Flanagan, Vice President for Administration
Salve Regina University

Step inside several of the mansions which form the heart of Salve's historic campus and learn about Salve's restoration and maintenance program for its buildings and grounds.

SECOND CONCURRENT SESSIONS, 3:30-5:00 PM

C1 A Picture Is Worth 1,000 Words

M. Joan Youngken, Curator, Newport Historical Society
Denise Bastion, Graphics Curator, RI Historical Society

Historic photographs are an invaluable resource for owners and HDCs seeking to document a building's earlier appearance. Familiarize yourself with RI photograph collections and learn how to "read" early photographs to aid your research..

C2 Stories in Sculpture

Ronald J. Onorato, PhD, Chair, Department of Art,
University of RI and Coordinator, RI Save Outdoor
Sculpture!

Enjoy a slide-illustrated talk on recently-discovered information about local sculptures and their creators. You'll return to your community ready to take a fresh look at public art.

C3 Care and Repair of Historic Timber-Frame Buildings

Bob Major and Mary Packard Turkel, Managing Partners,
The Preservation Cooperative Ltd.

Learn from experts about establishing regular maintenance programs and repairing original materials with traditional techniques and epoxy consolidation. Bring your specific maintenance and repair questions for discussion.

C4 Walking Tour of the Kay-Catherine Neighborhood*

John K. Grosvenor, AIA, Principal, Newport Collaborative

Visit one of Newport's most interesting neighborhoods to study the architecture and siting of houses designed between 1850 and 1888 by McKim Mead & White, George Champlin Mason, Richard Morris Hunt and other renowned architects.

C5 Tour of Kingscote*

Staff, The Preservation Society of Newport County

Enjoy a guided tour of this charming 1839 Richard Upjohn "cottage," furnished in the 1860s by China Trade merchant William Henry King.

C6 Tour of Museum of Newport History -- Brick Market *

Daniel Snyder, Jr., Executive Director, Newport
Historical Society

Hear the inside story of how Rhode Island's newest museum came to be and view the museum's lively exhibits.

C7 Walking Tour of The Point Neighborhood*

Annita Rafael, Board of Directors, History & Archives,
The Point Association

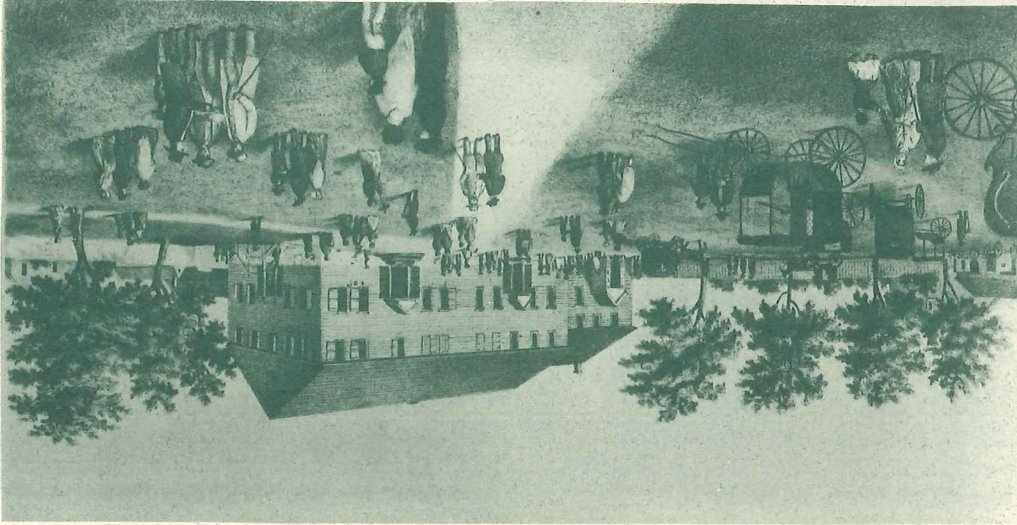
For 25 years, local residents have resisted development pressures and vigorously protected the Point's 18th-century character and cohesiveness. Discover the architecture and the community spirit which make the Point one of Newport's most appealing neighborhoods.

*Bus transportation will be provided between the Salve campus and tour sites.

Sponsored by

RI Historical Preservation Commission
City of Newport and the Newport Historic District Commission
RI Alliance of Historic District Commissions

Center for Historic Preservation, Roger Williams University
Heritage Trust of Rhode Island
League of Rhode Island Historical Societies



Newport, Rhode Island -- Saturday, April 9, 1994

*The 1994 Statewide Historic Preservation Conference
and Annual Meeting of the Rhode Island Alliance of Historic District Commissions*

PRESERVATION STRATEGIES FOR LIVABLE COMMUNITIES

Newport Historical Society
82 Touro Street
Newport, RI 02840

BULK RATE
U.S. Postage
PAID
Permit No. 82
Newport, RI 02840

STATEWIDE HISTORIC PRESERVATION CONFERENCE -- APRIL 9, 1994

REGISTER BY MARCH 31

Registration extended to April 6th.