

The Economics of Historic Preservation

Saturday, April 29, 2017

Westerly and Charlestown featuring Watch Hill

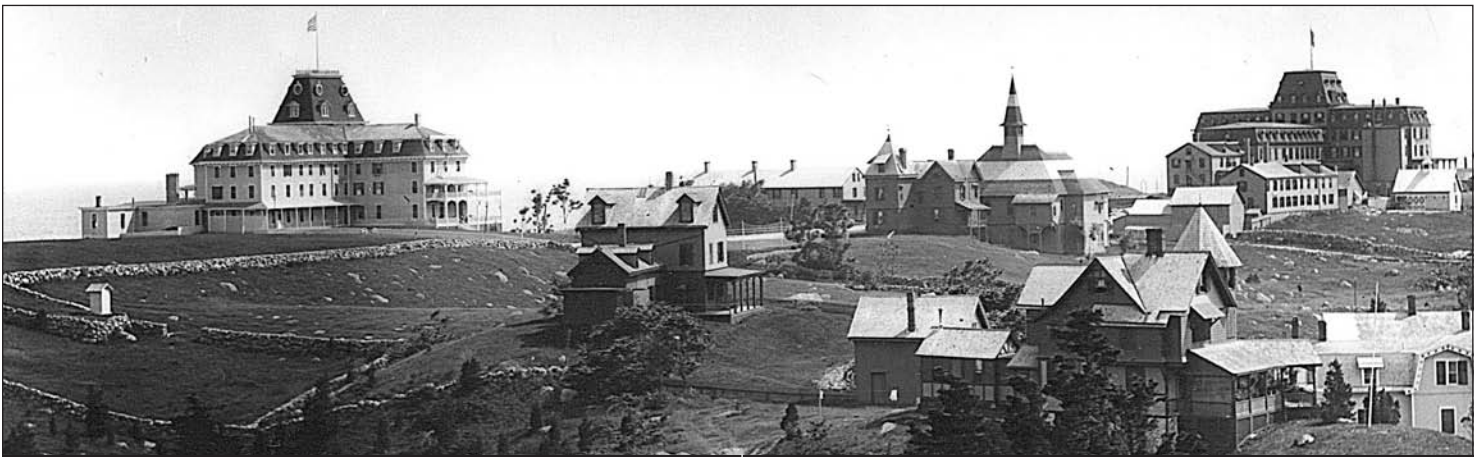


The 32nd Annual Rhode Island Statewide
Historic Preservation Conference

Rhode Island Historical Preservation & Heritage Commission

Conference Agenda

9:00–10:45am	B R E A K	11:15am–12:30pm	L U N C H	2:00–3:15pm	B R E A K	3:45–5:00pm	5:00–6:00pm
Opening Session Welcoming Remarks Keynote Address at Watch Hill Chapel		Session A Consult program for sites		Session B Consult program for sites		Session C Consult program for sites	Closing Reception at Lanphear Livery
		A Lunch Tours (11:15am–1:15pm)		B 3 hour tours (2:00–5:00pm)			



Opening Session

Greetings from

Dennis L. Algieri, *Senate Minority Leader and Senior Vice President, The Washington Trust Company*

Edith Eglin, *President, Watch Hill Chapel Society*

Deborah Royce, *Owner/Founder, Ocean House*

Valerie Talmage, *Executive Director, Preserve Rhode Island*

Edward F. Sanderson, *Executive Director, R.I. Historical Preservation & Heritage Commission*

Introduction to Keynote Speaker

Maia Farish, *Roger Williams University*



Special thanks to the Watch Hill Chapel Society for hosting the Opening Session.

This publication was financed in part with a Federal grant administered by the Rhode Island Historical Preservation and Heritage Commission, which receives federal funds from the National Park Service, US Department of the Interior. However, the contents and opinions do not necessarily reflect the views or policies of the Department of the Interior.

Regulations of the US Department of Interior strictly prohibit discrimination in departmental Federally assisted programs on the basis of race, color, national origin, disability or age in its federally assisted programs. Any person who believes he or she has been discriminated against in any program, activity, or facility as described above, please write to Office of Equal Opportunity, US Department of the Interior, National Park Service, 1849 C Street NW, Washington, DC 20240.

Keynote Address

The Economics of Historic Preservation – Recent Lessons from the U.S. and Beyond



Donovan D. Rypkema, *Principal, PlaceEconomics*

Historic preservation has aesthetic, cultural, educational, symbolic, environmental, and even spiritual values, but lately, advocates are turning their focus to measuring its economic value. Research has demonstrated the significant economic impact of preservation on property values, job creation, tourism revenues, and downtown revitalization. Historic districts are magnets for the knowledge and creative industries, for start-up businesses, and for walkability. During the depths of the recession foreclosure rates were significantly less in historic districts, and the recovery came sooner and stronger.

Donovan D. Rypkema will share some of his recent research and introduce metrics to be applied in a new study of the impact of historic preservation on Rhode Island's economy. Working with Preserve Rhode Island and the Preservation Society of Newport County, Rypkema will look at the role of historic preservation as an economic and community development tool that can support Rhode Island's growth statewide.

Donovan is principal of PlaceEconomics and president of Heritage Strategies International. Both firms work at the intersection of historic preservation, real estate, and economics, with public and non-profit sector clients in 49 states and nearly 50 countries. A graduate of the Historic Preservation Program at Columbia University, Donovan teaches at the University of Pennsylvania. His publication *The Economics of Historic Preservation: A Community Leader's Guide* is used by preservationists around the world. In 2012 Donovan received the Louise du Pont Crowninshield Award, the highest national recognition for achievement in historic preservation, presented by the National Trust for Historic Preservation.

The Keynote Address is sponsored by Roger Williams University, The Preservation Society of Newport County, and Preserve Rhode Island.

A1 Big Picture: Historic Preservation & Economic Development

► SITE WATCH HILL CHAPEL 1

Trudy Coxe, *CEO and Executive Director, PSNC*
Deborah Royce, *Owner/Founder, Ocean House*
Donovan Rypkema, *Principal, PlaceEconomics*
Edward F. Sanderson, *Executive Director, RIHPHC*
Scott Wolf, *Executive Director, Grow Smart Rhode Island*



Individual projects at Ocean House, Weekapaug Inn, Lanphear Livery, United Theatre, Savoy Bookstore, Nardone Motors, Grey Sail Brewing of RI, and the new Westerly Education Center are revitalizing Westerly's neighborhoods; collectively they represent significant economic development in southern Rhode Island. In Newport, 650,000 visitors to the Mansions in 2013 generated \$76 million in local spending in 2013; imagine the impact in 2016, when more than a million visited the Mansions. Join this panel of local, state, and national experts to discuss how local investments are building blocks of the state economy.

A2 Letting History Out of the Box

► SITE LANPHEAR LIVERY STOREFRONT 2

Marisa Angell Brown, *Assistant Director of Programs, JNBC for Public Humanities and Cultural Heritage, Brown University*
Joelle Kanter, *Program Manager, The Providence Foundation*
Caroline Stevens, *Director, Doors Open Rhode Island*
Sarah Zurier, *Historian, RIHPHC*

Some of the most innovative trends in heritage tourism and historic preservation are no-tech and communal. Introducing Jane's Walk, a worldwide movement of citizen-led walking tours inspired by urbanist Jane Jacobs. Meet Doors Open Rhode Island, an architectural matchmaker connecting people and places. And get to know Hacking Heritage, Rhode Island's cultural heritage unconference that fosters broad participation and provocative ideas.

A3 Green-Tinted Glasses: A New Vision for Historic Parks

► SITE OCEAN HOUSE DRAWING ROOM 3

Jeff Emidy, *Deputy Director, RIHPHC*
Lisa Lawless, *RIHPHC Commissioner and Supervising Civil Engineer, RI-DEM*
Wendy Nilsson, *Superintendent of Parks, Providence Parks Dept.*
Jennifer Pereira, *Director of Grant Programs, RI Foundation*



Rhode Island's landmark parks are having a moment in the sun. A \$10 million campaign for Roger Williams Park is producing significant improvements to infrastructure, programming, and use. A new report on outdoor recreation reveals how parks from Fort Adams to Lincoln's Chase Farm improve public health and the state economy. Talk with state and city leaders on policy-making, advocacy, marketing, programming, and preservation of our treasured historic parks.

A4 Climate Change and Our Landscapes: The South Coast

► SITE LANPHEAR LIVERY READING ROOM 2

Janet Freedman, *Coastal Geologist, RI-CRMC*
Timothy Ives, *Archaeologist, RIHPHC*
Pierre Morenon, *Professor of Anthropology, Rhode Island College*
Joseph Waller Jr., *Senior Archaeologist, PAL*



Take a "deep time" look at how 20,000 years of climate change has shaped cultural landscapes along the South Coast. Learn from an often disregarded repository of environmental history – the soil itself. Review an archaeological survey of coastal sites damaged by Hurricane Sandy to consider the diversity and vulnerability of an ancient heritage threatened by sea-level rise. And get an update from the RI-CRMC, which is charged with helping protect life and property from damage associated with sea-level rise and increasingly frequent and intense storms.

A5 Watch Hill Lighthouse WALKING TOUR

► STARTS CORNER OF LIGHTHOUSE & LARKIN ROADS 4

Paul Dewey, *Board of Directors, Watch Hill Lighthouse Keepers Assoc.*
Ann Snowden Johnson, *President, Watch Hill Lighthouse Keepers Assoc.*
Peter McCormick, *Treasurer, Watch Hill Lighthouse Keepers Assoc.*

Built of Westerly granite, the Watch Hill Lighthouse (1855-56) is the third beacon to light treacherous Watch Hill Point. The light station also includes the keeper's house, oil house, garage, and fog signal building—cared for by the Watch Hill Lighthouse Keepers Association since 1986. View artifacts (including a Fourth Order Fresnel lens), hear tales of brave keepers, and learn what it takes to preserve this sea-battered historic place. This tour includes 1/2-mile walks to and from the lighthouse.

A6 Cottage Colony 1 WALKING TOUR

► STARTS OUTSIDE WATCH HILL CHAPEL 1

Jack Renshaw, *Principal, Clifford M. Renshaw Architects*
Rich Youngken, *Preservation Consultant*

Large resort hotels defined the Watch Hill landscape until the 1880s, when wealthy urbanites began to build private summer homes overlooking the sea. Much of the early cottage colony remains intact as part of the Watch Hill Historic District, listed on the National Register in 1985. This tour along Bluff Avenue and Lighthouse Road will survey some of Watch Hill's distinctive late 19th-century and early 20th-century resort architecture and discuss historic preservation challenges, compatible design for infill and additions, and the economics of historic preservation.

Consult the map to locate conference sites numbered 1 through 8.

Session A 11:15am – 12:30pm (continued)

A7 Scenes on the Pawcatuck BOAT TOUR

► **DEPARTS PLIMPTON DOCK 5**

Joanna Doherty, *Architectural Historian, RIHPHC*
Harvey Perry II, *Honorary Trustee, Rhode Island Chapter of the Nature Conservancy*

The Pawcatuck River defines the border of Stonington, Connecticut and Westerly, Rhode Island but also connects the two communities in a long shared history. As you cruise upriver, learn about historic uses of the land and water, farming, fishing, shipbuilding, industrial development, summer resorts, and recreation. Highlights include Watch Hill residences perched on the bluffs, the city of granite monuments at River Bend Cemetery, Avondale, the Perry Homestead and Mechanic Street Historic Districts, boatyards, factories, and a glimpse of Downtown Westerly.



Session A 11:15am – 1:15pm *Tours A8–A10 are 2 hours long and include lunch on site.

A8 The North Side of the Tracks: North End BUS TOUR with lunch

► **DEPARTS FROM BAY STREET LOT 6**

Blanche Higgins, *Community Planner*
Jason Mancini, *Director, Mashantucket Pequot Museum & Research Center*
Chris White, *Board Member, Greater North End Community Dev.*

Revitalization is in progress in Westerly's North End, with many private, public, and neighbor-led projects. See the mill villages of Stillmansville and White Rock, a 150-year old African-American and Narragansett Indian church, the Jonnycake Center, new parks, and the area's signature granite masonry built by Italian and Narragansett Indian craftsmen. Lunch is served in the Tap Room of Grey Sail Brewing of RI—next to the old Westerly Macaroni Factory (ca. 1929) where Grey Sail is brewed.



Certification Maintenance

A10 Babcock-Smith House Museum BUS TOUR with lunch

► **DEPARTS FROM BAY STREET LOT 6**

Docents, *Babcock-Smith House Museum*

The ca. 1734 Babcock-Smith House Museum is witness to nearly three centuries of Westerly history. Explore the house's colonial past, the property's role in the birth of the local granite industry, and the 1928 restoration by architect Norman Isham. And don't miss the collection of furniture made in Rhode Island between 1720 and 1810.

Session B 2:00pm – 3:15pm

B0 One Moore Tour

► **DEPARTS IN CARS FROM #33/BOATERS' LOT 7**

Desa D. Buffum and James C. Buffum, *Hosts/Realtors, Mott & Chace Sotheby's International Realty*
Robert Stack, AIA, *Exec. Director, Mid-Century Modern RI*

This very special tour visits Westerly's Klotz House, described by William Jordy as "probably the single most important modernist house built in Rhode Island during the 1960s." Its architect Charles Moore would go on to win the AIA Gold Medal (for impact on the field of architecture), AIA Topaz Medallion (for teaching and scholarship), and the AIA 25-Year Award for Sea Ranch Condominium I. Moore's boldly geometric design for the Klotz House undulates and unfolds on its hilltop site. The inviting interior features vaulted ceilings, cypress wood walls, multiple levels, and an array of windows that look out over woods and water. Explore this modern masterpiece, outside and in.

A9 Literary Landmark: Westerly Library & Wilcox Park BUS TOUR with lunch

► **DEPARTS FROM BAY STREET LOT 6**

Brigitte Hopkins, *Exec. Director, Westerly Library & Wilcox Park*
Elena Pascarella, ASLA, *Principal, Landscape Elements*
Alan Peck, *Superintendent, Wilcox Park*

Westerly Library and Wilcox Park are the heart of Downtown Westerly. This tour will showcase the historic Romanesque Revival-style library and reveal the park's historic landscape design, specimen trees, and collection of monuments and markers. The library and park were recently designated as Rhode Island's first Literary Landmark, recognizing their stewardship of the legacy of beloved children's book author Margaret Wise Brown.



Certification Maintenance

B1 Rhode Island's Creative and Cultural Economy



► SITE WATCH HILL CHAPEL 1

Amber Caulkins, *Director, The College & University Research Collaborative*

Liz Keithline, *State Cultural Facilities Grants, RISCA*

Francis Leazes, Jr., *Professor of Political Science, Rhode Island College*

Stacey Springs, *Investigator in Health Services, Policy and Practice, Brown University*

Sarah Zurier, *Historian, RIHPHC*

William Zywiak, *Lecturer in Mathematics, Bryant University*

After Rhode Island voters approved the \$35 million Creative and Cultural Economy Bonds in 2014, RISCA engaged the Collaborative's team of academic researchers to measure the impact of investments in arts, culture, and heritage infrastructure. Learn about their findings, and get motivated to submit a grant application in 2017.

B2 Brown & Sharpe: Measure of Rhode Island's Economy

► SITE OCEAN HOUSE DRAWING ROOM 3

Gerald Carbone, *Author, Brown & Sharpe and the Measure of American Industry (forthcoming)*

Edward F. Sanderson, *Executive Director, RIHPHC*

Anthony J. Thomas Jr., *Principal and Partner, The Foundry*

A clockshop that grew to be the world's largest producer of precision machinery, machine tools, and measuring devices, Brown & Sharpe shaped Rhode Island's economy and American industrial capitalism. After the Providence plant shut down in 1964, the empty 25-acre complex in sight of the State House became an emblem of the state's decline. Gradually—and now completely—reused for offices and apartments, the Foundry demonstrated that historic preservation could drive economic development in post-industrial Rhode Island. Speakers will reflect on the expansive legacy of Brown & Sharpe.

B3 Law and Order: HDC



► SITE LANPHEAR LIVERY STOREFRONT 2

Jeff Emidy, *Deputy Director, RIHPHC*

Henry Gauthier, *Chair, North Kingstown HDC*

Jason Martin, *Preservation Planner, City of Providence*

Andrew Teitz, *Partner, Ursillo, Teitz & Ritch*

In the Historic District Commission justice system, there are two sides – the petitioners for Certificates of Appropriateness and the volunteer commissioners who approve or deny them. In this session, we present preservation law for non-lawyers. We will learn from a lawyer and HDC staff members how to conduct a lawful meeting, what the law actually allows HDCs to do, and tips for making sure that the law is on your side, whether you are a petitioner or a commissioner.

B4 Climate Change and Our Landscapes: Block Island



► SITE LANPHEAR LIVERY READING ROOM 2

Kevin McBride, *Director of Research, Mashantucket Pequot Museum & Research Center*

Bryan Oakley, *Assistant Professor of Environmental Geoscience, Eastern Connecticut State University*

David Robinson, *Marine Archaeologist, University of Rhode Island*

Climate change has shaped cultural landscapes on Block Island for thousands of years. Hear how researchers are reconstructing the coastal environments of the Manissee. Review an archaeological survey of coastal sites damaged by Hurricane Sandy to understand the diversity and vulnerability of a heritage threatened by sea-level rise. And learn how the Beach Special Area Management Plan uses cutting-edge technologies and survey methodologies to project the movement of shorelines over time.

B5 The Queen of Watch Hill: Ocean House WALKING TOUR

► STARTS OCEAN HOUSE VERANDA 3

Edith Eglin, *Ocean House, Resident*

Virginia Hesse, *Principal Historic Architect, RIHPHC*

Colin Kane and Jordan Stone, *Principals, Peregrine Group*

Nicholas Moore, *In-House Counsel to Chuck Royce*

Jefferson B. Riley, *FAIA, Partner, Centerbrook*

Deborah Royce, *Ocean House, Founder/Owner*

Donna and Grant Simmons, *Ocean House, Investors*

Built in 1868, Ocean House welcomed guests summer after summer until the endangered building was shuttered in 2003. New owners rebuilt Ocean House in consultation with preservationists and local experts, reusing any granite cobble, wood trim, or piece of furniture that could be salvaged. Today's Ocean House offers five-star accommodations in a space that preserves the spirit of the old hotel.

B6 Cottage Colony 2 WALKING TOUR

► DEPARTS OUTSIDE FRONT OF LANPHEAR LIVERY 2

Jack Renshaw, *Principal, Clifford M. Renshaw Architects*

Rich Youngken, *Preservation Consultant*

[See A6 description. B6 walks along Niantic, Ninigret, and Wauwinnet avenues and Westerly and Watch Hill roads.]

B7 Scenes on the Pawcatuck BOAT TOUR

► DEPARTS PLIMPTON DOCK 5

Chris Kepple, *Development Coordinator, Stonington Historical Society*

Dave Prescott, *South County Coastkeeper, Save the Bay*

[See A7 description.]

Session B 2:00pm – 5:00pm

* Tours B8–B10 are 3 hours long. If you attend one, you will not be able to attend a C session.

B8 The Big Picture: Downtown Westerly BUS TOUR

► DEPARTS FROM BAY STREET LOT 6



Dennis L. Algieri, *Senate Minority Leader and Senior Vice President, The Washington Trust Company*

Simon Holt, *Executive Director, United Theatre*

Daniel King, *Executive Director, Royce Family Fund*

Thomas J. Liguori, Jr., Esq., *House Counsel, Cherenzia Companies*

Kelly Presley, *Executive Director, Westerly Land Trust*

New construction and historic rehabilitation are transforming and revitalizing Downtown Westerly. What's new? The Savoy Bookshop in the former Savoy Hotel (1888) and the Westerly Education Center (2017), where students train to build electric submarines. What old favorites are coming back to life? The Knickerbocker (1933) and the United Theatre (1926). And what knits it together? Wilcox Park and Westerly Library, civic buildings and churches, enduring institutions like The Washington Trust Company, and many mom-and-pop businesses.

B9 Built from Stone: Westerly Granite BUS TOUR

► DEPARTS FROM BAY STREET LOT 6

Linda Smith Chaffee, *whose family owned Smith Granite Company*

John B. Coduri, *whose family owned Joseph Coduri Granite Co.*

Ellen L. Madison, Ph.D., *whose family owned Richard Opie Granite Co.*

Join the authors of *Built from Stone: The Westerly Granite Story* (2011) to examine Westerly's granite industry from its beginnings in 1846 to the present. Learn about the individual craftspeople, entrepreneurs, and various ethnic groups who contributed to the story. Stops will include a walking tour of downtown Westerly and a second walking tour of significant monuments in River Bend Cemetery.

B10 Scenes from Charlestown BUS TOUR

► DEPARTS FROM BAY STREET LOT 6

Anne Doyle, *Archivist, Quonochontaug Historical Society*

Pam Lyons, *President, Charlestown Historical Society*

Charlotte Taylor, *Archaeologist, RIHPHC*

Sample Charlestown with an archivist, an advocate, and an archaeologist. First stop is Quonochontaug ("Quonnie"), an agricultural area that became a summer resort community at the turn of the century. Next up is Fort Ninigret, a settlement of the Niantic/Narragansett for centuries that evolved into a fortified trading and manufacturing center in the 17th century. Last stop is the village of Cross Mills to visit the restored 1838 schoolhouse and museum of town history. In between, take in the roadside architecture of U.S. Route 1 and rural scenes along back roads.



Session C 3:45pm – 5:00pm

C0 Another Moore Tour

► DEPARTS IN CARS FROM #33/BOATERS' LOT 7

[See B0 description.]

C1 Historic Sacred Places and the Economic Halo Effect

► SITE OCEAN HOUSE DRAWING ROOM 3



Tuomi Joshua Forrest, *Exec. VP, Partners for Sacred Places*

Katy Pomplun, *Grants Coordinator, RIHPHC*

Dyan Vaughan, *Co-Chair of Historical Properties Collection, First Congregational Church in Bristol*

Did you know that the average historic church, synagogue, or mosque in an urban environment generates more than \$1.7 million annually in economic impact? Have you heard about the National Fund for Sacred Places, a \$10 million matching grant program that funds capital projects at historic houses of worship? Learn how to make the case to policy-makers and funders that your historic sacred place contributes to the local economy, and discover how this new grant program can assist your congregation. Also hear about grant opportunities available for historic sacred places in Rhode Island.

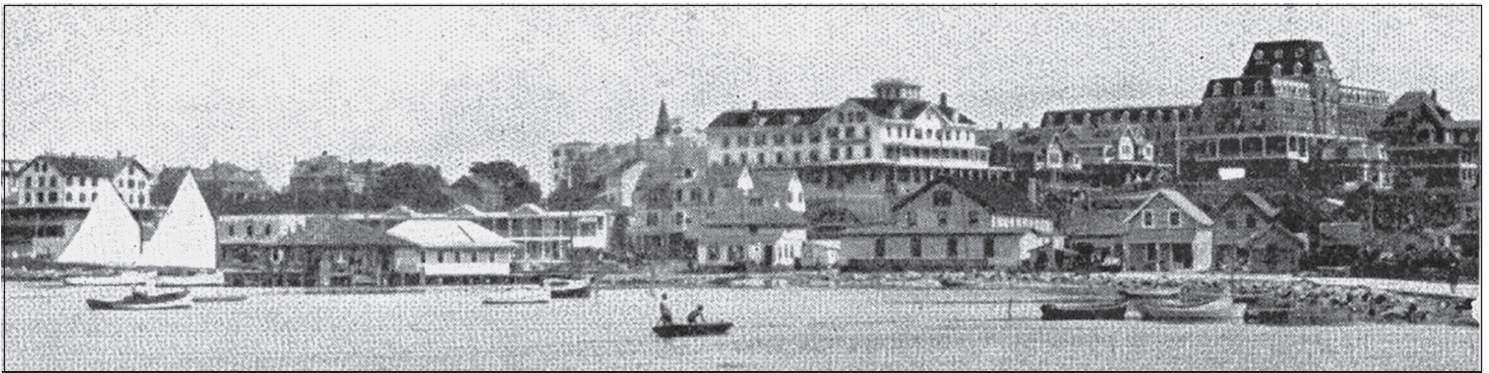
C2 A Continuum of Craft: Architecture, Furniture, and Historic Preservation

► SITE LANPHEAR LIVERY READING ROOM 2

Caryne Eskridge, *Marcia Brady Tucker Fellow, Yale University Art Gallery*

Jeffrey Greene, *Furniture-maker and Owner, The Ball & Claw*
Margot Nishimura, *Deputy Director of Collections, Programming, and Public Engagement, Newport Restoration Foundation*

Preserving buildings and collecting furniture have been tandem pursuits since the historic preservation movement began. Inspired by the recent landmark exhibit *Art and Industry in Early America: Rhode Island Furniture, 1650-1830* at the Yale University Art Gallery, this panel will highlight the historic connections between house carpentry and furniture-making. Join us to learn how local museums are using this exciting new research on Rhode Island furniture to retell their stories and engage in the continuum of craft.



Session C 3:45pm – 5:00pm (continued)

C3 Preservation U: Recent University Projects

► SITE LANPHEAR LIVERY STOREFRONT 2

Marisa Angell Brown, *Assistant Director of Programs, JNBC for Public Humanities and Cultural Heritage, Brown University*
Students and faculty from Brown University, RISD, Roger Williams University, Salve Regina University, and URI

Students at Rhode Island's colleges and universities are expanding and redefining the field of historic preservation. Topics include architectural visions for Newport's Point neighborhood in 2050/2100, the history of mobile and prefab structures in Providence, Historic American Landscape Survey documentation of Westerly's Wilcox Park, stone conservation at The Breakers in Newport, and the architecture of sacred places.

C4 Climate Change Reality BOAT TOUR

► DEPARTS PLIMPTON DOCK 5

Janet Freedman, *Coastal Geologist, RI-CRMC*
 Timothy Ives, *Archaeologist, RIHPHC*
 Bryan Oakley, *Assistant Professor of Environmental Geoscience, Eastern Connecticut State University*

Depart from Watch Hill Cove for a short journey across the waters of space and time. View the iconic and ever-changing shores of Napatree Point and (perhaps as far as) Watch Hill Point as your guides discuss the challenges of historic preservation and coastal management in light of climate change projections.

C5 Street Smart: Bay Street WALKING TOUR

► STARTS LANPHEAR LIVERY BACK PATIO 2

Sharon Ahern, *Executive Director, Watch Hill Conservancy*
 Gary Anderson, *Artist and Carousel Restorer, Anderson Artworks*

Bay Street is Watch Hill's Main Street, dotted with shops, restaurants, monuments, and green spaces opposite the cove. The updated commercial corridor has several key anchors that retain the feel of the historic seaside resort, such as the Flying Horse Carousel (1876), Olympia Tea Room (1939), Ninigret sculpture (1914), Ridley Watts Memorial (1940), and newly rehabbed Lanphear Livery (1885). Local experts will discuss streetscape improvements, burial of utility lines, seasonal businesses, and other projects and challenges.



C6 The Only Thing Constant is Change: Napatree Point WALKING TOUR

► DEPARTS OUTSIDE JAN'S BOUTIQUE STORE 8

Peter August, *Professor of Natural Resources Science, URI*
 Janice Sassi, *Manager, Napatree Point Conservation Area*
 Rich Youngken, *Preservation Consultant*

Once a heavily wooded peninsula, Napatree Point was swept clean by the Gale of 1818, then was developed as the site of a coastal fortification (Fort Mansfield) and summer cottages, and was swept clean again by the 1938 Hurricane. Today, Napatree is a wildlife preserve and beach. As you walk the beach, learn about Napatree's role in the historical development of Watch Hill and about stewardship challenges for managing this ever-changing landscape. Strenuous walking—please wear shoes suitable for the sandy beach.



Now Showing 8:15am – 6:00pm

The Watch Hill Chapel 1 will host exhibits of sponsors and partners and local documentaries downstairs from 8:15am-3pm. The Lanphear Livery Atrium 2 will host exhibits and films about the Livery rehab project and Napatree Point from 11am-6pm. Special thanks to Weathervane Communications and Ocean State Video.

At Lunch 12:30pm – 2:00pm

Lunch A1-A7 sessions will be held at the Watch Hill Chapel 1 and Lanphear Livery 2. Check your lunch ticket for your assigned location. Lunch for A8-A10 sessions is at your tour site.

Closing Reception 5:00pm – 6:00pm

Enjoy the company of friends and colleagues at the Lanphear Livery 2, recently rehabilitated by One Bay Street Center. In 1885, H.C. Lanphear erected a full-service livery with stables and carriage storage downstairs and housing for groomsmen and other servants above. The rehabilitation of Lanphear Livery for retail, office, and community space was funded in part with state historic tax credits, a Hurricane Sandy Grant, and support from private foundations.

Thank you: Lead sponsors



RI Historical Preservation
& Heritage Commission

Watch Hill Fire District
Chartered 1901



ONE BAY STREET CENTER



WATCH HILL
CHAPEL SOCIETY



AMARAL REVITE
GENERAL CONTRACTORS



OCEAN HOUSE
WATCH HILL, RHODE ISLAND

WASHINGTON
★ TRUST ★



Rhode Island Historical Preservation & Heritage Commission

The Rhode Island Historical Preservation & Heritage Commission is the state agency for historical preservation and heritage programs. The commission operates a statewide historical preservation program that identifies and protects historic resources, and it carries out programs to document and celebrate the cultural heritage of Rhode Island's people.

National Park Service

In 2016, the National Historic Preservation Act turned 50, and the National Park Service celebrated its centennial.

Town of Charlestown

Charlestown properties listed on the National Register of Historic Places include Fort Ninigret, as well as three historic districts.

Town of Westerly

Westerly properties listed on the National Register of Historic Places include the Babcock-Smith House, Flying Horse Carousel, and Westerly Armory, as well as seven historic districts.

Watch Hill Fire District

For more than a century, the Watch Hill Fire District, a quasi-municipal corporation chartered by the Rhode Island General Assembly, has managed its significant assets and has regularly championed positions that support and protect Watch Hill's unique heritage and character.

Amaral Revite

Founded in 1991, Amaral Revite specializes in light commercial construction with projects that vary from minor repairs to historic rehabilitation to new construction. Historic preservation projects include office facilities at West River Center (the former Rhode Island Tool complex) and 81 Park Place (the former Church Hill Grammar School).

Ocean House

Ocean House is a destination in itself: a grand seaside hotel with farm-to-table cuisine, an award-winning spa, and daily resort activities perched on the bluffs of Watch Hill. Carefully reconstructed to reuse historic material and reinterpret the historic design, Ocean House is the first and only AAA Five Diamond and Forbes Five-Star hotel in Rhode Island.

One Bay Street Center

One Bay Street Center rehabbed the former Lanphear Livery (1885) to provide an array of community spaces, storefronts, offices, and apartments. The project was funded in part with state historic preservation tax credits, a Hurricane Sandy Grant, and support from private foundations.

Royce Family Fund

Founded in 1985, the Royce Family Fund supports historic preservation, higher education, and the arts. Their Westerly projects include Ocean House, Westerly Education Center, Savoy Bookstore, Lanphear Livery, Weekapaug Inn, the Knickerbocker, and United Theatre.

The Washington Trust Company

Founded in 1800, Washington Trust is the largest independent bank in Rhode Island and the oldest community bank in the nation. Washington Trust offers a full range of financial services, including business banking, personal banking, and wealth management and trust services

Watch Hill Chapel Society

The Watch Hill Chapel Society was organized in 1875, and erected a building to designs by architect George Keller in 1877. The chapel was enlarged in 1887 and 1902 and remodeled in the Colonial Revival style in 1928. The organization's mission encompasses a broad range of service, charity, and community outreach.

Watch Hill Conservancy

The Watch Hill Conservancy protects and preserves Watch Hill's natural resources, including its flora, fauna, and open space, and promotes the preservation of its historic architecture. WHC strives to enhance the quality of life in this uniquely scenic and historic coastal community.

Youngken Associates

Youngken Associates is an award-winning historic preservation, museum services, and community planning consulting firm. Projects include local planning studies, cultural and historic resources inventories, National Register nominations, historic structure reports, historic preservation plans, historic tax credit applications, and exhibits.

Thank you: Sponsors



**ARCHITECTURE
+ PLANNING**
www.A4ARCH.com



THE 1772 FOUNDATION



**BREWSTER
THORNTON
GROUP
ARCHITECTS**
LLP



THE DAMON COMPANY

1995
founded



AIA
Rhode Island



BARBARA SOKOLOFF ASSOCIATES
A Development and Community Planning Consulting Firm



Brown Center
for Public Humanities
BROWN UNIVERSITY



DIMEO



BETA
CELEBRATING 35 YEARS



American Planning Association
Rhode Island Chapter

STARR DEVELOPMENT PARTNERS



BRADY SULLIVAN
PROPERTIES



DBVW
ARCHITECTS



E.F. O'Donnell & Sons Co., Inc.
Painting & Restoration Contractors Since 1900

A4 Architecture + Planning

A4 Architecture + Planning is a full-service architecture firm that specializes in residential, commercial, and institutional design. A4 Architecture is committed to historic preservation and sustainable design.

American Institute of Architects/ Rhode Island

Founded in 1875, AIA/RI is the seventh oldest component of a national organization of licensed architects and associated professionals. AIA/RI members maintain a commitment to leadership of the profession and quality, consistency, and safety in the built environment.

American Planning Association/ Rhode Island Chapter

A non-profit public interest and research organization dedicated to urban, suburban, regional, and rural planning, APA-RI provides a forum for the understanding and application of sound planning principles in Rhode Island.

The 1772 Foundation

The 1772 Foundation works to ensure the safe passage of historic buildings and farmland to future generations. In 2016, the Foundation made over \$3 million in grants to historic property redevelopment programs, land trusts, philanthropic activities, and other projects.

Barbara Sokoloff Associates

BSA is a development and community planning firm focused on affordable housing, mixed-use projects, charter schools, strategic planning, and public participation.

BETA Group, Inc.

BETA Group provides environmental, transportation, traffic, and civil/site, and civil structural engineering; urban design, land planning, and landscape architecture; environmental science; GIS/asset management; and construction services.

Brady Sullivan Properties / Starr Development Partners

Starr Development and Brady Sullivan have collaborated on projects at Slater Cotton Mill, Grant Mill, Pocasset Mill, Anthony Mill, Harris Mill, American Insulated Wire Complex, and Warren Manufacturing Company.

Brewster Thornton Group Architects

Brewster Thornton Group Architects, LLP is a Women's Business Enterprise architectural firm with experience in institutional, educational, and residential projects—including new design, adaptive reuse, master planning, feasibility studies, asset surveys, and masonry restoration.

Brown Center for Public Humanities

The John Nicholas Brown Center for Public Humanities and Cultural Heritage provides an innovative M.A. program, engaged research, and professional workshops that help students, practitioners, and communities make art, history, and culture meaningful, useful, and accessible.

DBVW Architects

Founded in 1994, DBVW Architects is an award-winning architectural firm. Their broad range of projects includes the preservation and adaptive re-use of historic structures, the design of commercial and institutional buildings, and the creation of affordable, neighborhood housing.

The Damon Company

The Damon Company is a general contracting and construction management firm founded in 1995. Located in Newport, the company has special interest in historic and architecturally significant restoration and experience in both prominent commercial and residential properties.

Dimeo Construction

Dimeo Construction aims to service its clients with the goal of optimizing the value of their construction investment. Their work profile is extensive and balanced across most building sectors including: healthcare, corporate, life sciences/R&D, academic, public, commercial and residential.

E.F. O'Donnell & Sons

E.F. O'Donnell & Sons has provided painting and restoration services since 1900. The company has restored historic buildings throughout the area, including the John Brown House and Rhode Island State House. Robert O'Donnell received the Frederick C. Williamson Professional Service Award in 2009.

Thank you: Sponsors



E W BURMAN
GENERAL CONTRACTORS



THE FOUNDRY



Epsilon Associates

Epsilon Associates is an environmental engineering and consulting company specializing in securing environmental approvals for real estate, energy, and infrastructure development projects.

E.W. Burman, Inc.

E.W. Burman is a full-service general construction and construction management firm. The company has completed public, medical, administrative, educational, retail, and manufacturing projects, with historic preservation work at the Hotel Providence, Miramar, and Corliss-Brackett House.

The Foundry

The Foundry Associates have converted 19 buildings in the historic Brown & Sharpe complex (1872+) into nearly 700,000 square feet of office space in the Foundry Corporate Office Center and 433 residential units.

Gilbane, Inc.

Based in Providence, Gilbane is one of the largest privately held family-owned real estate development and construction firms in the industry. Since 1873, the firm has provided finance, development, planning, and construction services.

Heritage Restoration Inc.

Heritage Restoration is a professional design, consulting, construction, and general contracting firm specializing in historic buildings. Their experienced team with its broad range of specialties is dedicated to preserving your home's beauty, function and charm.

Historic New England

Historic New England collects and preserves buildings, landscapes, and objects spanning five centuries. The organization manages historic sites, collections, and an extensive library. HNE works with property owners and advocates to preserve significant New England residential resources.

Innerglass Window Systems

Innerglass is a manufacturer of custom glass interior storm windows for energy conservation and soundproofing. Their interior storms can outperform almost any replacement, while maintaining the integrity and beauty of historic windows.

Kay Hall Lofts

The Kay Hall Lofts are located in the former Trinity Church Parish House (ca. 1898, 1924) in Newport's Historic Hill neighborhood. The rehabilitation of the Colonial Revival-style building for seven condominium units was assisted by state preservation tax credits.

KITE Architects

KITE Architects provides thoughtful and creative assistance for a diverse array of architectural and interior design projects. The firm has experience with institutional buildings, private development, and public facilities ranging from modest renovations to large new urban landmarks.

Lila Delman Real Estate

Founded in 1964, Lila Delman Real Estate offers a discerning eye and breakthrough presentation strategy for fine homes around coastal Rhode Island. The company is a committed member of and contributor to preservation, historical, and community organizations which preserve and build on the rich heritage of Rhode Island's coast and landmarks.

Martone Service Company

Martone helps clients protect, maintain, and enhance the value of their buildings. Their firm manages complex construction, historic restoration, painting, and coating projects across a range of commercial, industrial, and residential properties.

Michael McKinley & Associates

This award-winning architectural firm specializes in coastal homes throughout New England and Florida. Their individualized design services create enduring and memorable gathering places.

Mott & Chace, Sotheby's International Realty

Mott & Chace Sotheby's International Realty is a leading choice for Rhode Island luxury real estate. Led by Ray Mott and Judy Chace, the firm represent some of the most distinctive properties in Southern New England.

Newport Architectural Forum

NAF was founded in 2007 as a group within the membership of the Newport Art Museum. They host or co-sponsor lectures, conferences, tours, and exhibitions on architecture and related topics each month.

Thank you: Sponsors



Roger Williams University



Northeast Collaborative Architects

Northeast Collaborative Architects maintains offices in Newport and Providence, RI and Middletown, CT. The firm has carried out a wide range of projects including preservation, education, hospitality, commercial, civic, medical, and residential.

Ocean House Marina

Ocean House Marina in Charlestown is a family owned and operated business serving Rhode Island, Connecticut, and Massachusetts for more than 30 years. Located on scenic Ninigret Pond with easy access to Block Island Sound, the full service marina offers boat sales and rental, service, parts, bait, and tackle.

Paolino Properties

From its founding in 1900, Paolino Properties has embraced a mission that combines a reverence for tradition with progressive practices and policies. Convenient locations, attractive and well-maintained properties, and a strong tenant mix is a formula that ensures long-term success for their clients.

PAL

The Public Archaeology Laboratory is New England's leading consultant firm in cultural resource management and specializes in terrestrial and marine archaeology, architectural history, research and documentation, and preservation planning.

The Preservation Society of Newport County

Rhode Island's largest cultural organization, the Preservation Society of Newport County preserves and protects three centuries of American architecture, decorative arts, and landscape design spanning the Colonial era to the Gilded Age.

Preserve Rhode Island

Chartered in 1956, Preserve Rhode Island is the statewide non-profit historic preservation organization. PRI protects historic structures and unique places for future generations.

Providence Preservation Society

Since 1956, the Providence Preservation Society has grown to a prominent citywide preservation, advocacy, and education organization.

RI Chapter of the American Society of Landscape Architects

The Rhode Island Chapter of the American Society of Landscape Architects promotes the profession of landscape architecture and advances the practice through advocacy, education, communication, and fellowship.

RISD

Founded in 1877, Rhode Island School of Design is one of the oldest and best-known colleges of art and design in the country. RISD's Department of Interior Architecture takes an innovative approach to the reuse and transformation of existing buildings with advanced design studios focused on adaptive reuse.

Roger Williams University School of Art, Architecture and Historic Preservation

Roger Williams University is an independent university, where students become community- and globally-minded citizens through project-based, experiential learning. The School of Architecture, Art and Historic Preservation prepares students for leadership in professional practice, service, and individual creative pursuits.

Salve Regina University

Founded by the Sisters of Mercy, Salve Regina University is an independent institution in the Catholic tradition of education. Salve's undergraduate program in Cultural and Historic Preservation encompasses architectural history, historical archaeology, and preservation planning.

Sandra Liotus Lighting Design

Sandra Liotus Lighting Design provides custom design and engineering lighting solutions and systems. Fittings are minute and discreet with the highest quality glass lenses that create safe conservation lighting for valuable art collections.

Starkweather & Shepley

In 1879, James Starkweather and George Shepley opened an agency that changed the way people in Rhode Island would think about insurance. As one of the 100 largest U.S. brokers, the firm continues to offer insurance, risk management, and related services to a global economy.

Thank you: Sponsors



TAYLOR INTERIOR DESIGN



The Thomas P. Sculco & Cynthia D. Sculco Foundation



In cooperation with

Anderson Artworks
 Babcock-Smith House Museum
 The Ball & Claw
 Bryant University
 Gerald Carbone
 Centerbrook
 Charlestown Historical Society
 Cherenzia Companies
 City of Providence
 Clifford M. Renshaw Architects
 The College & University Research Collaborative
 Betty-Jo Cugini
 Doors Open Rhode Island
 Eastern Connecticut State University
 First Congregational Church in Bristol
 The Greater North End Community Development Inc.
 Grey Sail Brewing of Rhode Island
 Grow Smart Rhode Island
 Blanche Higgins
 Landscape Elements
 Mashantucket Pequot Museum & Research Center
 Meeting Mavens
 Mid-Century Modern RI
 Napatree Point Conservation Area
 Newport Restoration Foundation
 North Kingstown HDC
 Partners for Sacred Places
 Peregrine Group
 The Providence Foundation
 Providence Parks Department
 Quonochontaug Historical Society
 Rhode Island Chapter of the Nature Conservancy
 Rhode Island Coastal Resources Management Council
 Rhode Island College
 Rhode Island Department of Environmental Management
 Rhode Island Foundation
 Rhode Island State Council on the Arts
 Save the Bay
 Stonington Historical Society
 United Theatre
 University of Rhode Island
 Ursillo, Teitz & Ritch
 Watch Hill Lighthouse Keepers Association
 Westerly Historical Society
 Westerly Land Trust
 Westerly Library and Wilcox Park
 Yale University Art Gallery



Rhode Island Historical Preservation
 & Heritage Commission
 150 Benefit Street
 Providence, RI 02903
www.preservation.ri.gov
 401.222.2678

Taylor Interior Design

Located on Providence's East Side, Taylor Interior Design was established in 1967. Principal Nancy Taylor leads an experienced team of design professionals and support staff specializing in high-end residential and commercial interiors.

Tecton Architects

Tecton Architects is an architectural, interior design, and master planning firm that has served notable clients for more than 35 years. The firm delivers solutions for its clients through a balance of thoughtful design and an integrated team approach.

The Thomas P. Sculco & Cynthia D. Sculco Foundation

The Thomas P. Sculco & Cynthia D. Sculco Foundation has its roots in Rhode Island. Dr. Thomas P. Sculco is a native of Westerly and a Brown graduate, and Dr. Cynthia Sculco is a University of Rhode Island graduate and a trustee of the URI Foundation.

VHB

Since 1979, VHB has provided planning, design, engineering, and consulting for infrastructure and development projects. Their planning, transportation, land development, and environmental professionals create successful and workable results, changing the face of the built environment.

Ventrone Architecture LLC

Ventrone Architecture specializes in historic preservation and adaptive reuse projects, as well as transportation architecture. Projects include the restoration of Rose Island Lighthouse and the Washington Bridge Linear Park.

Weekapaug Inn

The Weekapaug Inn was founded in 1899, rebuilt in 1939 on the shore of Quonochontaug Pond in Westerly, and restored in 2010-12. Today the Inn hosts 31 guest rooms and provides farm-to-table fine and casual dining, event space, and a wide range of recreational activities.

Additional support from Nicholas C. Moore, Esq, Haynes/de Boer Architects and Pucci, Greene, & Fusaro, LLC.