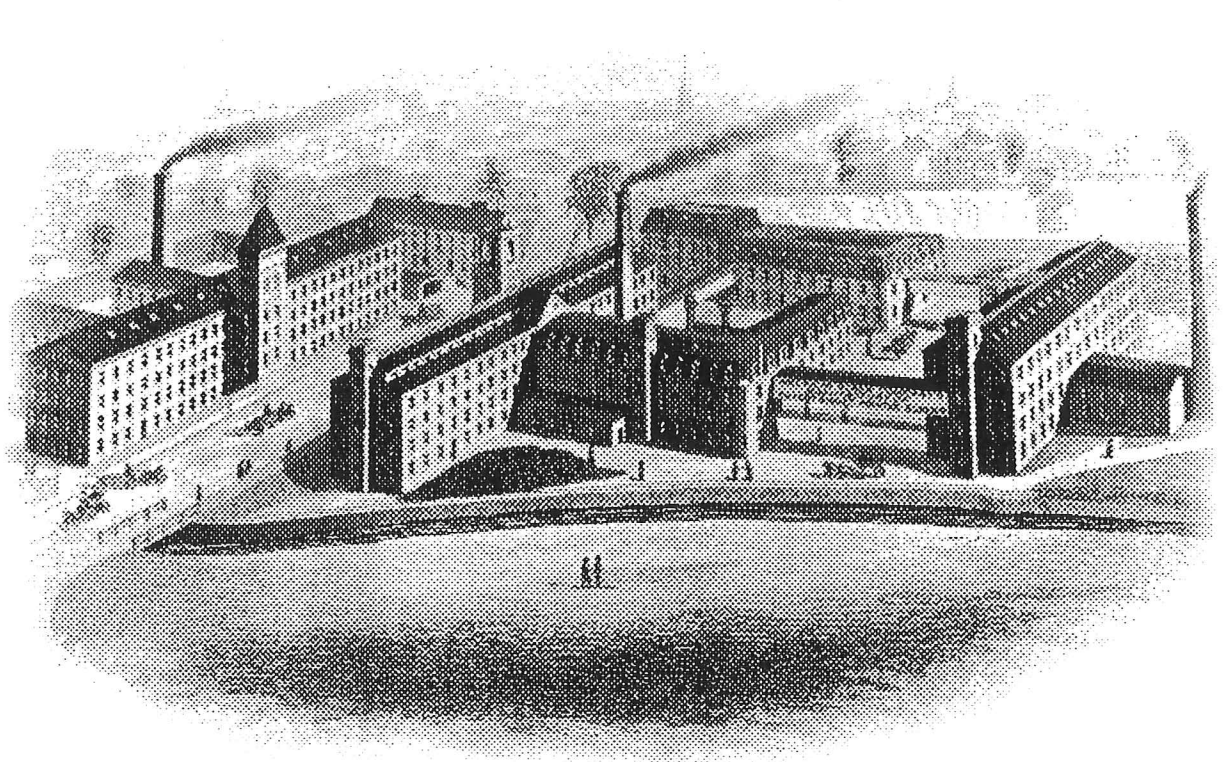


New Perspectives on Historic Resources
 Saturday, April 21, 2001, Providence

RHODE ISLAND
 STATEWIDE
 HISTORIC PRESERVATION
 CONFERENCE



Historic preservation lets us take a fresh, new look at old, familiar places. For example, a vacant mill building can be reused as loft apartments, studios, and work places. In turn, the revitalized building helps to renew the surrounding area. New perspectives also come from taking another look at our neighborhoods to discover more about the history, people, and physical character of a community. Reevaluating the buildings in a historic district may reveal new aspects of the neighborhood's development. Sometimes learning about one type of historic resource—such as armories, diners, or boats—leads to new insights. Organizations need fresh perspectives too. Effective leaders and board members use new points-of-view to track their organization's mission and role in the community. At this year's Statewide Historical Preservation Conference we will share new perspectives on many preservation issues. Join us to hear from experts and leaders in our movement; visit historic sites in and around Providence; meet friends from all over the state; and honor award-winning achievements in preservation.

CONFERENCE AGENDA

8-9 AM	Registration VMA Arts and Cultural Center, 69 Brownell St.	11-12:30 PM	Morning A Sessions
		12:30-1:30 PM	Lunch
		1:30-3 PM	Afternoon B Sessions
9-10:45 AM	Welcoming Remarks <i>Keynote Address</i> Christopher Velasco Artspace Projects <i>2001 State Historic Preservation Awards</i>	3-3:30 PM	Coffee Break
		3:30-5 PM	Afternoon C Sessions
		5-6 PM	Closing Reception <i>Dedication of 1901 and 2001 time capsules at the Shepard's Building</i> URI Providence Campus, 150 Washington St.
10:45-11 AM	Coffee Break		

KEYNOTE
ADDRESS

“Lofty Visions: Developing Live/Work Spaces for Artists in Historic Buildings”

Christopher Velasco
Director of National Advisory Services, Artspace Projects

Mr. Velasco launched his career with Artspace as a client. As an active composer and screenwriter, he became a resident in a building developed by Artspace. From the Tilsner Artists' Cooperative Board, Mr. Velasco has become an integral part of Artspace and a leader in advisory services. His work with artist communities has propelled Artspace into the national spotlight of arts and cultural facilities. Through his work as Manager of National Consulting, Mr. Velasco has underscored the necessity of clear and solid connections between community development and the arts. His duties include presentation of advisory services nationwide; market research; training & technical assistance to artist communities; and development of legal documents for cooperatives nationally. Mr. Velasco has been substantially responsible for the growth of Artspace's consulting services locally and nationally.

A1 EAGLE SQUARE:
WHAT HAPPENED,
WHAT'S NEXT

SITE: VMA Arts & Cultural Center, 69 Brownell St.

Moderator: Edward Sanderson,
Executive Director, RIHP&HC

Derek Bradford, *Rhode Island School of Design*

Catherine Horsey, *Executive Director, Providence Preservation Society*

Bill Kraus, *Project Manager, Artspace Projects*

Raphael Lyon, *West Side artist*

Samuel J. Shannon, *Associate Director of Planning, City of Providence*

Eagle Square is a cluster of 19th- and early 20th-century industrial buildings in the Valley neighborhood of Providence. It is a place to live, work, and meet for local artists, manufacturers, and community members. And it is the site of a proposed shopping center that would demolish the buildings and disrupt current uses. Get up to date on new developments, and listen to new perspectives from Artspace Projects and a recent RISD architecture studio class.

A2 TRANSFORMING
PROVIDENCE II:
NEW DESIGN IN
HISTORIC DISTRICTS

SITE: Room 260A&B, URI Providence Campus, 80 Washington St.

Moderator: Paul Pawlowski,
ASLA, Pawlowski Associates

Guy Abelson, *Chairman, Downcity Design Review Commission*

Randall Imai, *Architect, Imai/Keller Architects, Inc.*

Bill Kite, *AIA, William Kite Architects*

Clark Schoettle, *Acting Chair, Providence Historic District Commission*

Last year, the Transforming Providence conference initiated a civic discussion about new design in Providence. In this panel discussion, architects and regulators pair up to present case studies of new work in historic districts. What happens to the original design concept as it goes through the review process? How do architects and clients approach issues of historic context at new building sites?

A3 THE PRESERVATION
AND ARCHAEOLOGY OF
HISTORIC CEMETERIES

SITE: DEM Room 300, The Foundry, 235 Promenade St.

Moderator: Paul Robinson, Ph.D.,
Senior Archaeologist, RIHP&HC

James C. Garman, Ph.D., *Assistant Professor of Archaeology, Salve Regina University*

John Sterling, *Rhode Island Cemetery Transcription Project*

Widely recognized for the design of their monuments and landscape, historic cemeteries are also valuable sources for demographic and social history. After a review of state legislation concerning historic cemeteries, learn how archaeological techniques are used to determine the boundaries of old cemeteries, hear about a multi-disciplinary study that involved the relocation of two cemeteries in Johnston, and find out about a new program to replicate rare and endangered gravestones.

A4 LOCAL FLAVOR:
RHODE ISLAND DINERS

SITE: DEM Cafeteria, The Foundry, 235 Promenade St.

Daniel Zilka, *Founder and Director, American Diner Museum*

The American diner originated in 1872, when part-time newspaper printer Walter Scott began to sell prepared food from a converted horse-drawn freight wagon in Downtown Providence. In 2003, the American Diner Museum will open at Heritage Harbor Museum. Catch up on the history of this truly American institution and learn about diners past and present throughout the state. This talk precedes a bus tour of local diners (B9).

A5 PAINT: PLEASURES
AND PERILS

SITE: Gloria Dei Lutheran Church, 15 Hayes St.

Moderator: Roberta Randall,
Preservation Architect, RIHP&HC

Harry Adler, *Co-owner, Adler's Design Center*

John Vaughan, *Principal, Architectural Conservation Services*

This technical workshop offers three takes on a sticky subject: paint. First review the myths and facts about lead paint in your historic building—to remove or to encapsulate? Next learn how to investigate your existing paint. Finally, discover how to choose appropriate historic paint colors and finishes for interiors and exteriors. Bring your questions about paint.

A6 DEFENDING FORT
ADAMS

SITE: Room 401, RWU Providence Campus, 150 Washington St.

Moderator: Virginia Hesse
Preservation Architect, RIHP&HC

John Grosvenor, *AIA, Principal, Newport Collaborative Architects*

Anthony Palermo, *Executive Director, Fort Adams Trust*

Arnold Robinson, *Director of Planning, Newport Collaborative Architects*

Lee Whitaker, *President, Fort Adams Trust*

A National Historic Landmark, Fort Adams is one of Newport's last major historic sites to undergo restoration. Authors of a new preservation study present their findings about the future of this historic fort. Join the Fort's Executive Director in a discussion of how to restore and interpret one of Rhode Island's favorite places.

A7 ROGER WILLIAMS PARK
REBORN: BUS TOUR

DEPARTS from VMA Arts & Cultural Center, 69 Brownell St.

Fred Holman, *Roger Williams Park*

Last year, the National Trust gave an Honor Award for the restoration of Roger Williams Park. Explore the restored landscapes, buildings, and sculptures that contribute to this 19th-century “Jewel of Providence.” Learn about the latest plans for a new arboretum on the grounds of the park.

A8 TWENTIETH CENTURY
LIMITED: BUS TOUR

DEPARTS from VMA Arts & Cultural Center, 69 Brownell St.

Robert O. Jones, *Architectural Historian, RIHP&HC*

It's 2001—do you know what “historic” is? Now properties from the entire first half of the twentieth century are old enough for National Register consideration. This tour highlights historic resources from the 1910-1950 period, with a special emphasis on domestic architecture.

A9 LIPPITT HOUSE AND
STIMSON AVENUE:
WALKING TOUR

DEPARTS from VMA Arts & Cultural Center, 69 Brownell St.

Sally Barker, *Curator, Governor Henry Lippitt House*
Sarah Zurier, *Projects Specialist, RIHP&HC*

The Governor Henry Lippitt House is a remarkably intact, Renaissance Revival-style mansion built during the Civil War. Explore the meticulously restored interior, with its richly carved woodwork, colorful stenciling, faux marble painted walls, and dazzling stained glass windows. Then stroll among the turn-of-the-century Queen Anne homes in the nearby Stimson Avenue National Register District.

A10 RHODE ISLAND STATE
HOUSE BEHIND THE
SCENES: WALKING TOUR

DEPARTS from VMA Arts & Cultural Center, 69 Brownell St.

Domenic Carbone, *AIA, Architect, State Building Commission*

Built between 1895 and 1904 to the designs of McKim, Mead and White, the Rhode Island State House is a landmark of American architecture. Tour this recently restored showpiece and learn about recent projects that renewed the House, Senate, Library, State Reception Room, and terraces.

B1 PROVIDENCE'S INDUSTRIES: A LEGACY TO BUILD ON

SITE: Room 260A&B, URI Providence Campus, 80 Washington St.

Richard Greenwood, Ph.D., Project Review Coordinator, RIHP&HC
Robert Sherman, Program Specialist, Museum of Work and Culture

Providence's emergence as the metropolis of southern New England was founded largely on its strength as a manufacturing center. This session examines how Providence's industrial past continues to enrich the city. Review the architectural legacy that includes some of the city's most powerful and distinctive buildings. Hear a report on "Milling Around," the innovative museum-within-a-school project at the Charles Fortes Magnet Academy (the former Elmwood Cotton Mill). This presentation precedes a tour of nearby industrial buildings (C5).

B2 CODE REHAB: NEW DEVELOPMENTS IN REHAB CODE

SITE: DEM Room 300, The Foundry, 235 Promenade St.

Moderator: Virginia Hesse, Preservation Architect, RIHP&HC
Joseph Cirillo, AIA, Rhode Island State Building Commissioner
Steve Durkee, AIA, Durkee Brown Viveiros & Werenfels Architects
Irving J. Owens, Rhode Island State Fire Marshal

Last year, Governor Lincoln Almond signed legislation to write a new rehabilitation code to replace the building and fire codes for existing structures. It is intended to facilitate the reuse of vacant and underused existing and historic buildings. Meet members of the State Rehab Code Drafting Committee and learn about their efforts to make renovation projects safe and cost-effective.

B3 NEW STRATEGIES FOR PRESERVATION ORGANIZATIONS

SITE: DEM Cafeteria, The Foundry, 235 Promenade St.

Moderator: William J. Penn, President, Clean Land Fund

Eric Hertfelder, Executive Director, Save Blithewold

Catherine Horsey, Executive Director, Providence Preservation Society

Meet the new directors of two of Rhode Island's outstanding preservation organizations, Save Blithewold and the Providence Preservation Society. Hear how these organizations are retooling their strategies, refocusing their missions, and forging new alliances at the beginning of the twenty-first century.

B4 HELP FOR YOUR HISTORIC HOUSE

SITE: Gloria Dei Lutheran Church, 15 Hayes St.

Moderator: Janet Zwolinski, Director of Programs, Preserve Rhode Island

R. Christopher Noonan, Principal, Preservation Services

Roberta Randall, Preservation Architect, RIHP&HC

Clifford Renshaw, AIA, Preservation Architect

This session will provide a wealth of useful information for the homeowner—from planning your restoration project to choosing a contractor. Do you want to save money on house projects? Get informed about the expanded Rhode Island tax credit for owners of historic houses. Join the discussion about the common issues faced by homeowners.

B5 HISTORIC BOATS OF THE OCEAN STATE

SITE: Room 401, RWU Providence Campus, 150 Washington St.

Moderator: Pamela Kennedy, Deputy Director, RIHP&HC

Halsey Herreshoff, President and Executive Director, Herreshoff Marine Museum

John Palmieri, Curator, Herreshoff Marine Museum

John Summers, Curator, International Yacht Restoration School

Rhode Island's maritime heritage is rich and exciting. Hear about a survey of the state's historic boats and talk with experts who are restoring some of our most historic and beautiful watercraft. Find out about work on the Coronet, an outstanding Victorian schooner yacht that is a designated project of Save America's Treasures.

B6 ARTISTS ON MAIN STREET: PLANNING FOR THE ARTS DOWNTOWN

SITE: Room 402, RWU Providence Campus, 150 Washington St.

Moderator: Kirsten Means, Executive Director, Main Street Rhode Island

Umberto Crenca, Artistic Director, AS220

Morris Nathanson, Morris Nathanson Design

Herbert Weiss, Program Manager for Development Projects, City of Pawtucket

What do Providence, Pawtucket, and Westerly have in common? Downtown arts districts. Learn about the tax incentives, programs, and cooperatives that support the arts community—and discover how artists enrich our historic downtowns. The conversation is important for artists, preservationists, community leaders, and developers alike. Panelists will explore what elements of this partnership work well and can be duplicated in other communities, and they will discuss how to overcome ongoing challenges.

B7 STRONG STATEMENTS: RHODE ISLAND'S HISTORIC ARMORIES

SITE: Room 403, RWU Providence Campus, 150 Washington St.

Roberta Mudge Humble and Col. Howard F. Brown, USA (ret.) co-authors, The Historic Armories of Rhode Island

The 18 historic armories of Rhode Island are valuable community resources as well as architectural expressions of military power. More than half of our armories are on the National Register of Historic Places. This presentation showcases the armories through pictures, history, and information about their re-use. Representatives from several of Rhode Island's chartered militia units will also participate.

B8 HISTORIC ELMWOOD: BUS TOUR

DEPARTS from The Foundry, 235 Promenade St.

Clark Schoettle, Executive Director, Providence Preservation Society Revolving Fund

From farmland to streetcar suburb to revitalized neighborhood, Elmwood has undergone a series of transformations since its annexation by the City of Providence in 1868. Witness houses before and after renovation. Look at new efforts to enhance the community through traffic calming, affordable housing initiatives, and commercial corridor programs.

B9 DINERS AND THEIR STORIES: BUS TOUR

DEPARTS from The Foundry, 235 Promenade St.

Daniel Zilka, Founder and Director, American Diner Museum

Hop on the bus for a slice of local culinary, social, and architectural history. Providence is the birthplace of the diner. Learn about Walter Scott's legendary lunch-cart and seek out its diner descendants in Pawtucket and Providence.

B10 JOHN BROWN HOUSE AND ITS NEIGHBORS: WALKING TOUR

DEPARTS from The Foundry, 235 Promenade St.

Wm. McKenzie Woodward, Architectural Historian, RIHP&HC

Widely recognized as one of the finest historic houses in America, the John Brown House was built in 1786 with profits from the maritime trade. It is furnished with the finest examples of Rhode Island furniture and decorative arts. The tour will continue with an extraordinary group of grand houses linked by family and business ties. You can explore these connections further on the Brown University Walking Tour (C7).

B11 WOONASQUATUCKET RIVER CORRIDOR: BUS AND WALKING TOUR

DEPARTS from The Foundry, 235 Promenade St.

Raphael Lyon, West Side Artist

Jon Özbek, Planner, City of Providence

Jane Sherman, Director, Woonasquatucket River Greenway Project

Thanks to its abundant natural and cultural resources, the Woonasquatucket was designated an American Heritage River in 1998. Tour the river corridor to witness its fascinating history, host neighborhoods, environmental challenges, and plans for revitalization.

This is a three-hour tour.

INFORMATION

**C1 HISTORIC BUILDINGS
CONTAMINATED SITES:
A BROWNFIELDS PRIMER
FOR PRESERVATIONISTS**

SITE: Room 260A&B, URI Providence
Campus, 80 Washington St.

MODERATOR: Sheila Brush,
*Program Director, Grow Smart
Rhode Island*

J. Michael Abbott, AIA, Principal,
Newport Collaborative Architects

William J. Penn, President,
Clean Land Fund

Industrial sites offer opportunities to meet smart growth, historic preservation, economic development, and housing goals—but only if we tackle environmental contamination issues effectively. This session—for property owners, developers, planners, and community residents who value old industrial properties—covers regulatory and liability issues, funding for building and site restoration, and the importance of strengthening current Rhode Island brownfields programs.

**C2 WHAT'S NEW ON
MAIN STREET**

SITE: DEM Room 300, The Foundry,
235 Promenade St.

MODERATOR: Kirsten Means,
*Executive Director, Main Street
Rhode Island*

Barbara Blycker, Director,
*Westerly-Pawcatuck Joint
Development Task Force*

**Dave Wixted, Secretary, Harborfront
Village Association (Newport)**

Rhode Island communities participate in the Main Street program to revitalize their historic commercial districts. Panelists will discuss their efforts, issues, and successes. The conversation will be a useful update for current Main Street participants and a valuable opportunity for preservationists to hear firsthand how local programs and Main Street Rhode Island can work together.

**C3 GET INVOLVED: LOCAL
HISTORICAL SOCIETIES
AND THE MUSEUMS AND
COMMUNITY INITIATIVE**

SITE: DEM Cafeteria, The Foundry,
235 Promenade St.

**MODERATOR: Murney Gerlach
Ph.D., Executive Director, Rhode
Island Historical Society**

**Christine Roundtree, Executive
Director, Providence Human
Relations Commission**

Elizabeth S. Warren, President,
Barrington Preservation Society

Are you active in a local historical society, an ethnic heritage group, a museum, or a historic site? Meet your counterparts from similar organizations around the state. Take part in a conversation about community participation in heritage education and learn about the AAM (American Association of Museums) Museums and Community Initiative and the League of Rhode Island Historical Societies.

**C4 LOCAL TAX INCENTIVES
FOR HISTORIC
PRESERVATION**

SITE: Gloria Dei Lutheran Church,
15 Hayes St.

MODERATOR: Pamela Kennedy,
Deputy Director, RIHP&HC

**Lisa Bourbonnais, Assistant Planning
Director, Town of East Greenwich**

**Paul Mowrey, Planner (retired),
City of Pawtucket**

Several Rhode Island communities now offer important tax breaks to property owners who fix up their historic buildings. Meet the planners who run these tax programs, and learn how you can save money while working on your historic building. Also, hear about the expanded Rhode Island tax credit for owners of historic houses.

**C5 PROVIDENCE'S
INDUSTRIAL BUILDINGS:
BUS TOUR**

DEPARTS from The Foundry,
235 Promenade St.

**Richard Greenwood, Ph.D., Project
Review Coordinator, RIHP&HC**

This tour explores the landmarks of Providence's manufacturing history. The itinerary focuses on the varied landscape of the industrial city, from the self-contained mill village of Wanskuck to the dense industrial corridor of the Woonasquatucket River and from the downtown center of the Jewelry District to isolated workshops and mills scattered throughout the city.

**C6 WHAT'S UP DOWNTOWN:
WALKING TOUR**

DEPARTS from The Foundry,
235 Promenade St.

**Virginia Hesse, Preservation
Architect, RIHP&HC**

**Steve Durkee, AIA, Durkee Brown
Viveiros & Werenfels Architects**

**Robert O. Jones, Architectural
Historian, RIHP&HC**

With city and federal tax incentives, the commitment of local businesses and artists, and a new Downcity Partnership revolving loan fund—preservation makes financial sense in Downtown Providence. Visit the Alice Building, a commercial building undergoing conversion to apartments, and other projects key to the revitalization of Downtown.

**C7 BROWN UNIVERSITY:
WALKING TOUR**

DEPARTS from The Foundry,
235 Promenade St.

**Wm. McKenzie Woodward
Architectural Historian, RIHP&HC**

**Carol Sanderson, Historic
Interiors Consultant**

From stately University Hall to the dynamic new Watson Center for International Studies, the campus of Brown University provides a capsule view of American architectural history. Tour the campus to witness four centuries of design and planning. Take an insider's look at the finishes and fabrics at the recently restored Maddock Alumni Center.

SHUTTLE BUSES leave from all buildings and have a sign in their window noting their destination.

PLEASE CHECK YOUR PROGRAM Take the bus that has your destination on the sign. If you parked at the DOT lot, and must leave sometime during the day, just check the buses for one going to the DOT lot.

ALL MORNING TOURS depart from VMA Arts & Cultural Center, 69 Brownell St.

ALL AFTERNOON TOURS depart from The Foundry, 235 Promenade St.

LUNCH Lunch is served in two locations: Gloria Dei Lutheran Church, 15 Hayes St. and The Foundry, DEM Cafeteria, 235 Promenade St. *Check the ticket* you received in your registration materials for the location of your luncheon.

COFFEE BREAKS Coffee is served in the VMA Arts & Cultural Center for the 10:45 AM break. Coffee is served in all locations for the 3 PM break.

CLOSING RECEPTION is held at the URI Providence Campus, 80 Washington St. We will dedicate two time capsules — from 1901 and 2001. Don't miss it!

SPONSORED BY
The Rhode Island Historical Preservation & Heritage Commission
The City of Providence
The Providence Preservation Society
The National Park Service
National Trust for Historic Preservation
Heritage Harbor Museum

IN COOPERATION WITH
AIA-Rhode Island
American Diner Museum
Cornish Associates
Department of Environmental Management
Grow Smart Rhode Island
Guy Abelson Catering
League of Rhode Island Historical Societies
Main Street Rhode Island
Meeting Mavens
Murphy and Murphy
Preservation Society of Newport County
Preserve Rhode Island
Rhode Island Historical Society
Roger Williams University
State of Rhode Island
URI - The Alan Shawn Feinstein
College of Continuing Education
VMA Arts & Cultural Center
Westerly Armory Restoration

Sponsors acknowledge with deep appreciation the many individuals and organizations that contributed to the presentation of New Perspectives on Historic Resources. We particularly recognize the hard work of all the speakers, panelists, and presenters and thank them for donating their time and expertise.

The Camera Werks
401 273.5367
764 Hope Street, Providence, RI

**David Silverman
Photography**
401 944.1835
51 Debbie Drive, Cranston, RI

Eastern Art & Frame Co.
401 781.8363
1376 Eddy St. (Washington Park)
Providence, RI

Terace Greene Photography
401 467.3838
thgphotography@aol.com